

# Multimedia 2006 Software User Manual

## General information

Screen layout and overview ----- 1

## Beginning Text Messaging

Get system information ----- 2

Select communication mode ----- 2

Create text ----- 3

## Advanced Text Messaging

Insert Bitmap file ----- 5

Insert real-time clock ----- 6

Insert countdown ----- 7

Insert temperature ----- 8

Insert variable ----- 8

Insert symbol ----- 9

Pre-define message show day(s) and time ----- 10

Pre-define power on/off ----- 11

Adjust brightness ----- 12

Set password ----- 13

Send messages to sign(RS232 communication) ----- 14

Send messages to group of signs--1(RS485 communication)----- 15

Send messages to group of signs--2(RS485 communication)----- 18

Send messages to sign-3 (TCP/IP communication) ----- 21

Send messages to sign-4 (TCP/IP communication  
of network) ----- 23

Make font ----- 25

Update firmware ----- 27

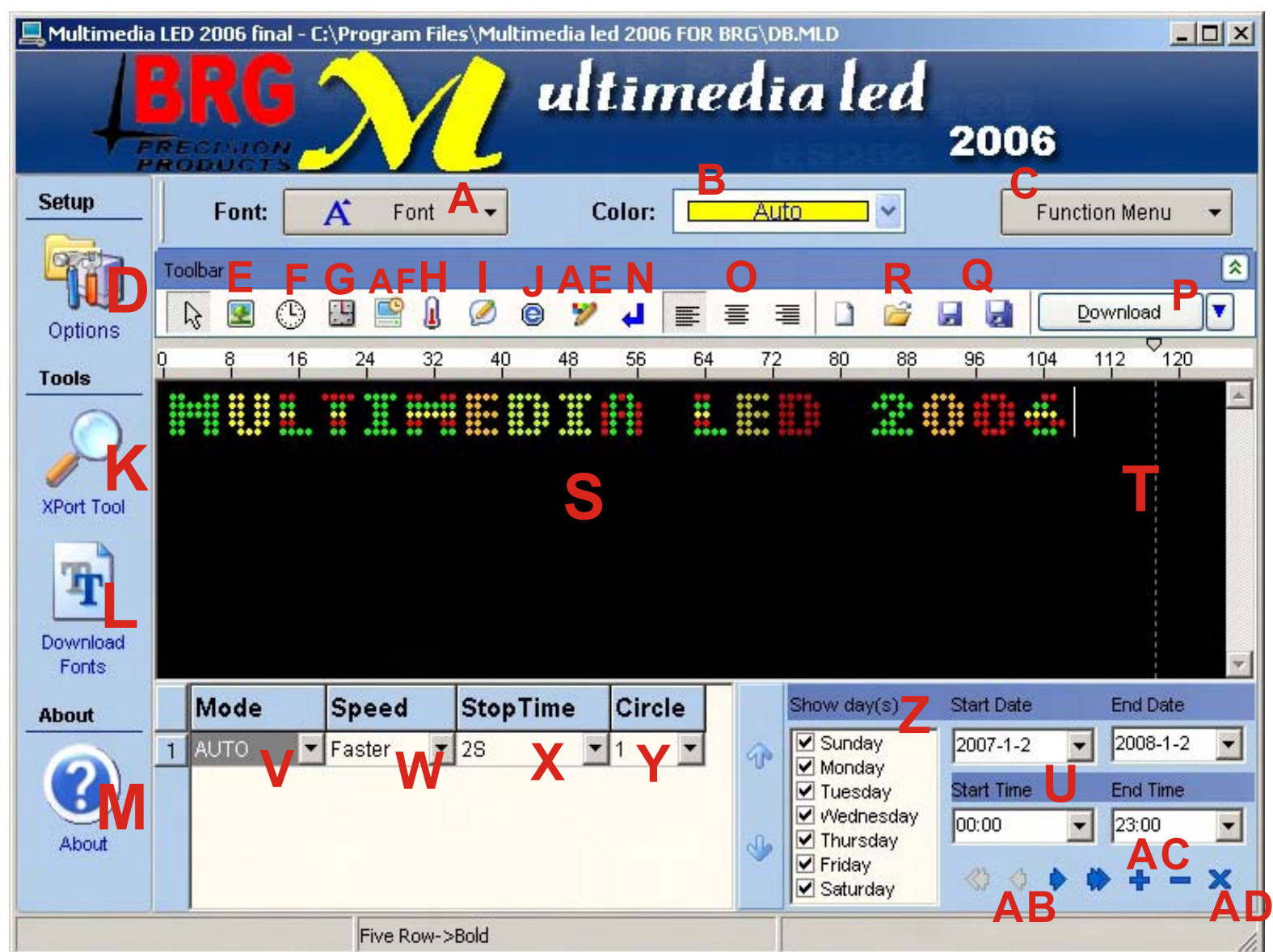
Set GSM communication ----- 28

Set circle play of messages ----- 28

## General Information

Messaging software allows you to send message from a PC to your sign. After you install the Messaging Software and start it up, then you can see as below:

### Screen layout and overview



A--Font: From five rows to 31 rows in Height	B--Color: 12 color available.
C--Function Menu: Include "Preview": to preview the effect of message on sign; "Multimedia Download": used for TCP/IP or Rs485 communication; "Image Edit": used for creating images; "Font Make": used for creating fonts; <b>"Language Editor": used for creating new languages of software .</b> <b>"Language": you can select the language of software.</b> "Fonts": you can select the font. "Check for a new version": used to get update software news. <b>"GPRS Admin": used for GPRS communication.</b> <b>"Run when windows start": select this , the software will run with your pc.</b>	D--Options: In this menu, you can set parameters, such as communication mode, Brightness, power on/off time, password, screen number, etc.
H--Insert temperature: Insert temperature. ( Note: need hardware to work)	E--Insert Bitmap: Insert graphics created in "Image Edit".
J--Insert symbol: Insert pre-defined symbols.	F--Insert datetime: Insert real-time clock.
L--Download Fonts: 8 fonts available: ( Note: After you update firmware or create new Fonts on this software, you must click it.	G--Insert countdown: Insert countdown time and date.
N--New Line: Click it to stat a new line. (Note: You must set this function under "Environment Setup" in "Options")	I--Insert variable: Insert variable.
P--Download: Send messages to sign.	K--X-Port Tool: Used for searching or editing IP Address of sign.
R--Open: Open *.mld file created on this software from PC.	M--About: Get information about this software.
T--Align line: Measure whether of not length of message on software beyond real length on sign.	O--Align: Include Align Left/Right/Cen ter.
V--Mode: 28 modes available.	Q--Save as: Save *.mld file created on this software onto pc.
X--Stop Time: 10 stop time available.	S--Messaging window: Type messages here.
Z--Show days: Pre-define show day(s) of messages/ (Note: need set up the "expand mode" under "Led mode" and "play on time" under "select play mode" in "Option". .	U--Start Show Time/End Show Time: Pre-define message start and end time. (Note: need set up the "expand mode" under "Led mode" and "play on time" under "select play mode" in "Option".
AC--Insert/cancel record: Insert or delete message files.	W--Speed: 5 speed available.
AE--Insert Extra Text: You can edit Multi-countries language.	Y--Circle
	AB--Prior/Next record: Make switch between message files.
	AD--Post/cancel edit: Save message file onto software or cancel message file.
	AF--Insert count up: Insert countup time and date.

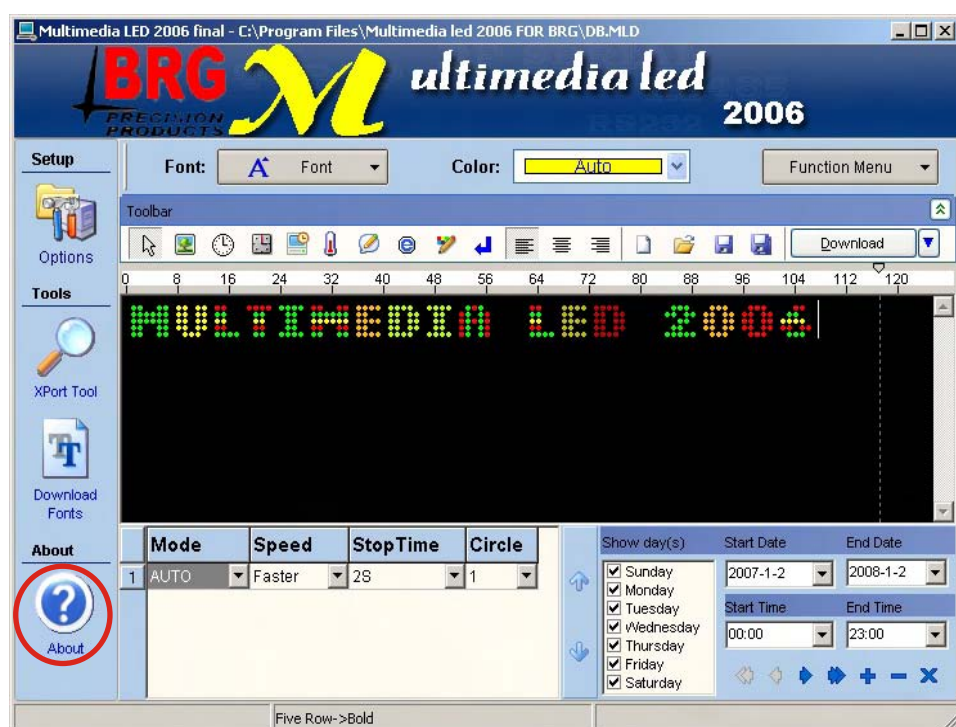


## Beginning Text Messaging

### Get system information

NOTE: You can get to know some basic information about display and software, such as size, color, firmware version, firmware update time of display, set equipment number, connection information, and so on.

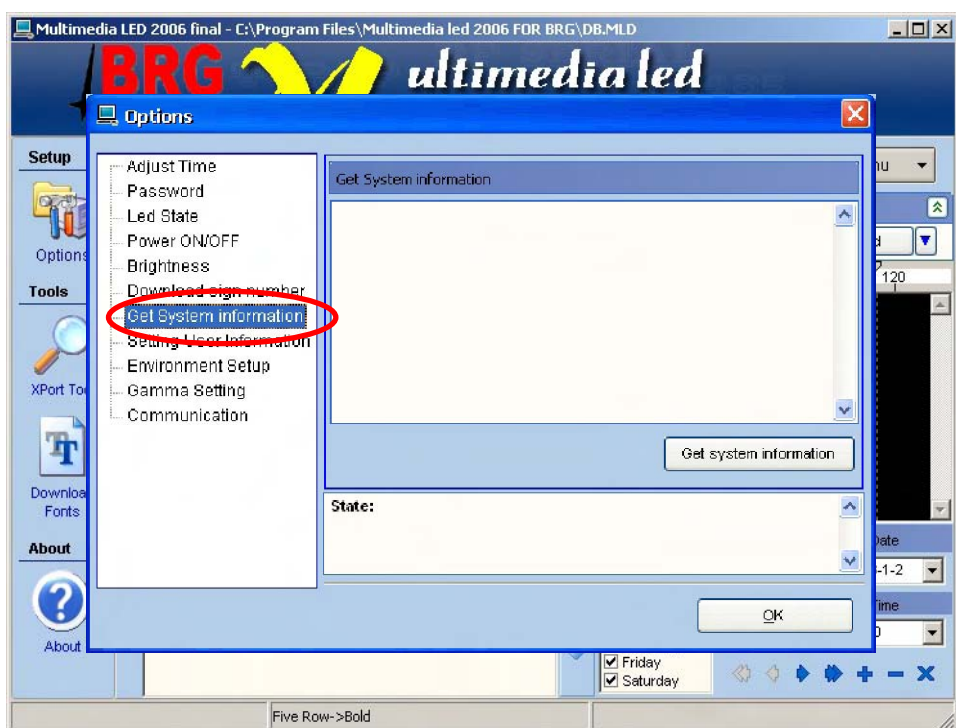
**Step1** Click “About”.



**Step2** You can get information about connection between sign(s) and pc by following steps below: Click “Options”.



**Step3** Click on “Get System information”.



When you click “Options”, the serials menu as below:

**Adjust Time:** Adjust time on sign the same as time on PC;

**Password:** Set your personal password for your sign.

**Led State:** Set your led sign's state.

**Power ON/OFF:** Pre-define the power on/off time for your sign.

**Brightness:** Adjust brightness for your sign, it need hardware to work.

**Screen Number:** Used for selecting group of signs when you choose RS485 communication.

**Get System information:** Get connection information between sign(s) and PC.

**Setting User Information:** Set the memo message when the sign is powered on.

**Environment Setup:** Set whether or not start a new line on sign by pressing Enter on keyboard.

**Communication:** Select communication way: RS232, RS485, TCP/IP, GSM, GPRS

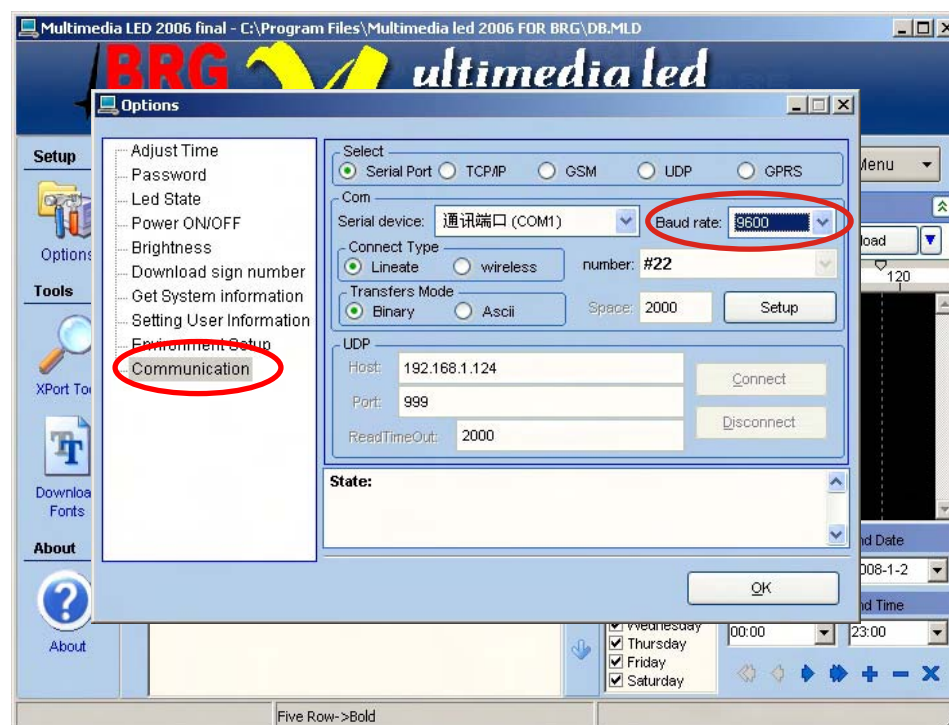
### Select communication mode

Note: Before you edit and send the information to display, you must choose the right communication way and make sure the sign is connected with PC.

**Step1** Click “Options”.



**Step2** Click “Communication”.  
Set “Baud rate” to 9600.





Note:

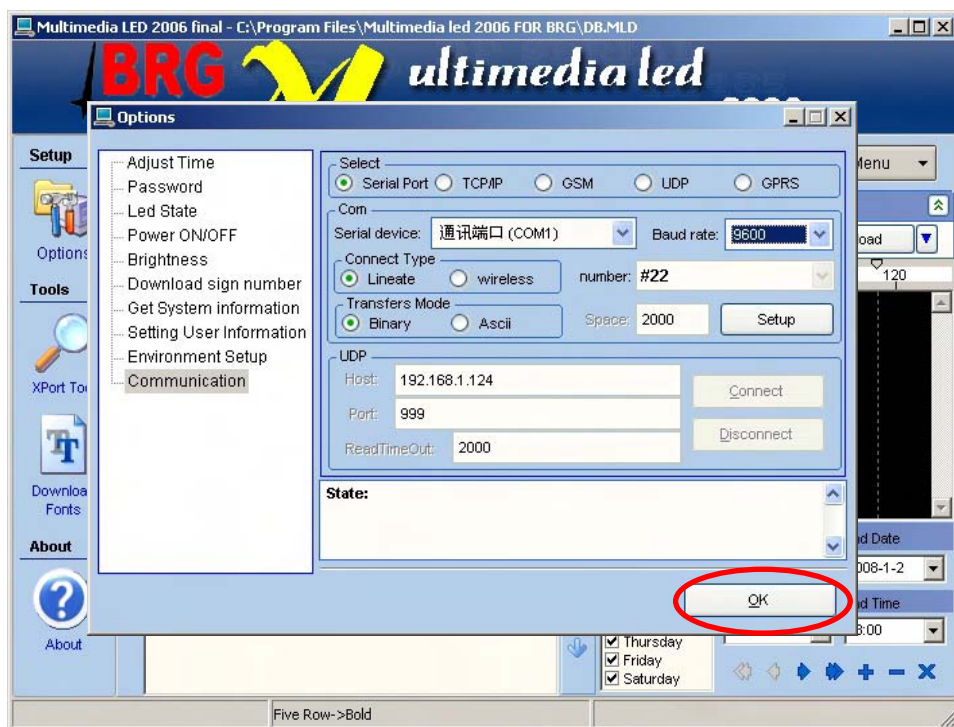
If you use RS232 or RS485 communication, you should select “Serial port--Lineate--Binary Transfers or Ascii Transfers”.

If you use RF MODEM communication, you should select “Serial port--wireless”.

If you use TCP/IP communication for only one sign, you should select “TCP/IP”.

**Step3**

Click “OK”.



## Create text

Note: Before you create text, you should click “Download Fonts”, especially after you update the firmware or save new fonts in the software.

**Step1**

For example, type “Welcome” in messaging window.




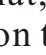

**Copy and paste:** You can paste content from WORD or EXCEL document, and paste in the messaging window.

**Set font and color:** Highlight text first, then set font size under **Font:** and character color under **Color:**

**Set mode, speed and stop time:** Set before download messages onto PC.

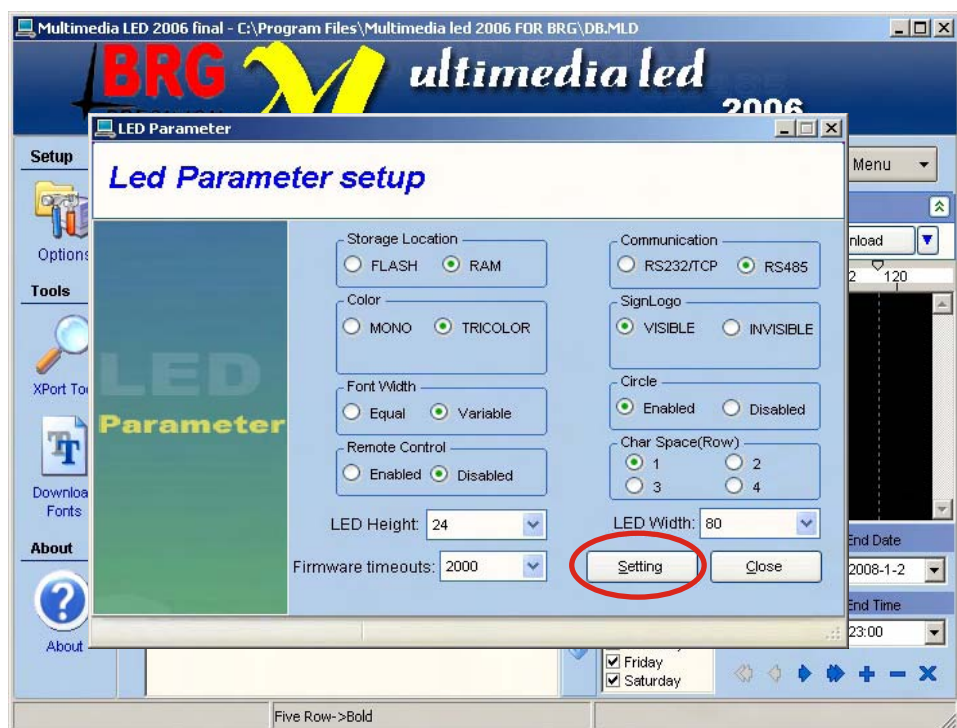
**Align:** You can align text Left/Right/Center by clicking

**Add new line:** Press Enter on keyboard or click . Note: Before you fulfill this function, you should make selection under “Environment Setup” in “Options” menu.

If you choose ☐ Insert New Line with Enter, which means that, once you click  on software, consequently, a new line on the sign. If you choose ☐ Do Not Insert New Line with Enter, which means that, even if you click  on software, there is no new line on the sign.

**Step2**

After you finish the message edit and before you send message to the sign: Press Ctrl+F3 on keyboard, you will see as below:



**Storage location:** Select RAM, if you update message quite often (one time for several minutes or seconds), RAM only store the last message; Select FLASH, if you update message not too often and save all messages.

**Color:** In case of your sign is tri-color, if you choose TRICOLOR, text would be displayed in tri-color, if you choose MONO, text would be displayed in single color. In case of your sign is of single color, whatever you choose, text would be displayed in single color.

**Font width:** If you choose EQUAL, all characters have same width (width is depending on the max. Width). If choose VARIABLE, characters differ in width.

**Remote control:** You can choose program sign by remote control or not.

**LED Width:** Set width of display area of sign.



**Communication:** Select RS232/TCP or RS485 when you use serial port; It also need do change on the controller and communication cable between RS232/TCP or Rs485.

**Signlogo:** Select whether you need start message when power on the sign.

**Circle:**Select whether you need the messages play circlely.

**Char space:** Set the space between characters, the default space is one dot.

**Step3**

Click “Download Text”.



**Download text:** If the message is only text, then click it, the inside symbols, countdown, time, temperature, etc, are all belong to text;

**Download All:** Download text and bmp picture from you PC to your sign. For picture, you only need download one time by clicking Download All, for second time, you only need click Download text, because the picture had been already stored on the software and is viewed as text by system.

**Download Variable:** In case of variable included in message, click Download Variable.

If you want to send other language ,not English to led sign,you can use “Insert Extra Text”.

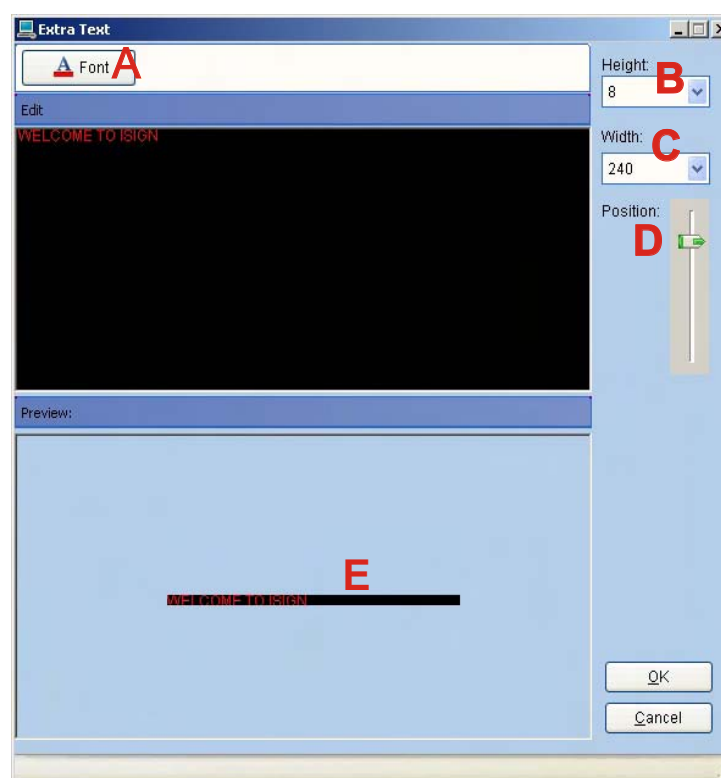
**Step1**

Click



**Step2**

Edit the text you want to send to sign



**A-Font:**Click “Font”, you can set the font,size,color

**B-Height:** Set the sign’s height

**C-Width:**Set the sign’s width

**D-Position:**Adjust the text ’ s position on the sign.


**E-Preview:**you can preview the text ’ s effect





**Step3** After editing,click “OK”, the text will display as a “BMP” file.

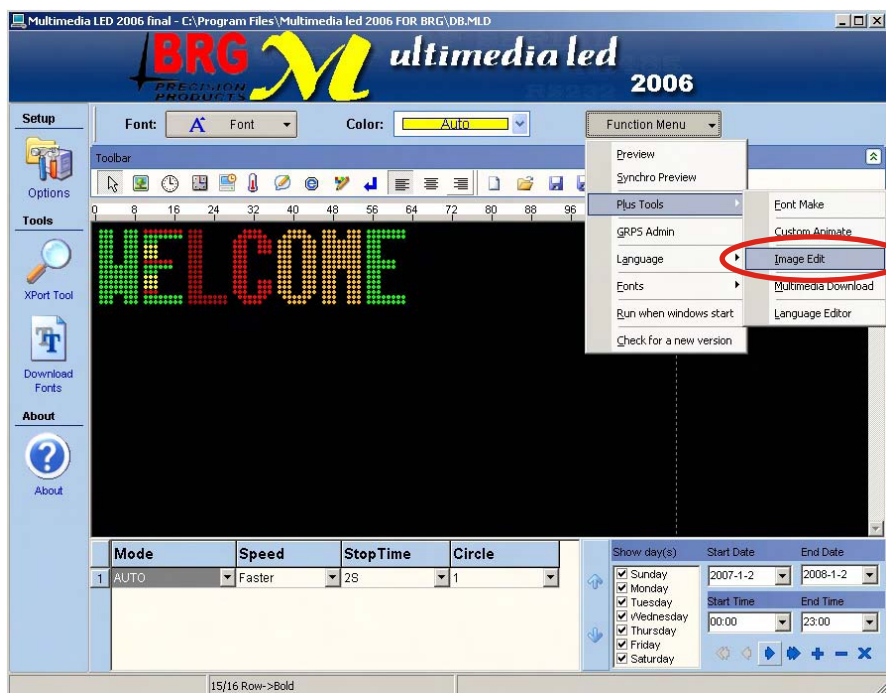


**Step4** If you want to modify the text , double click  , return to the step 2, edit the text.

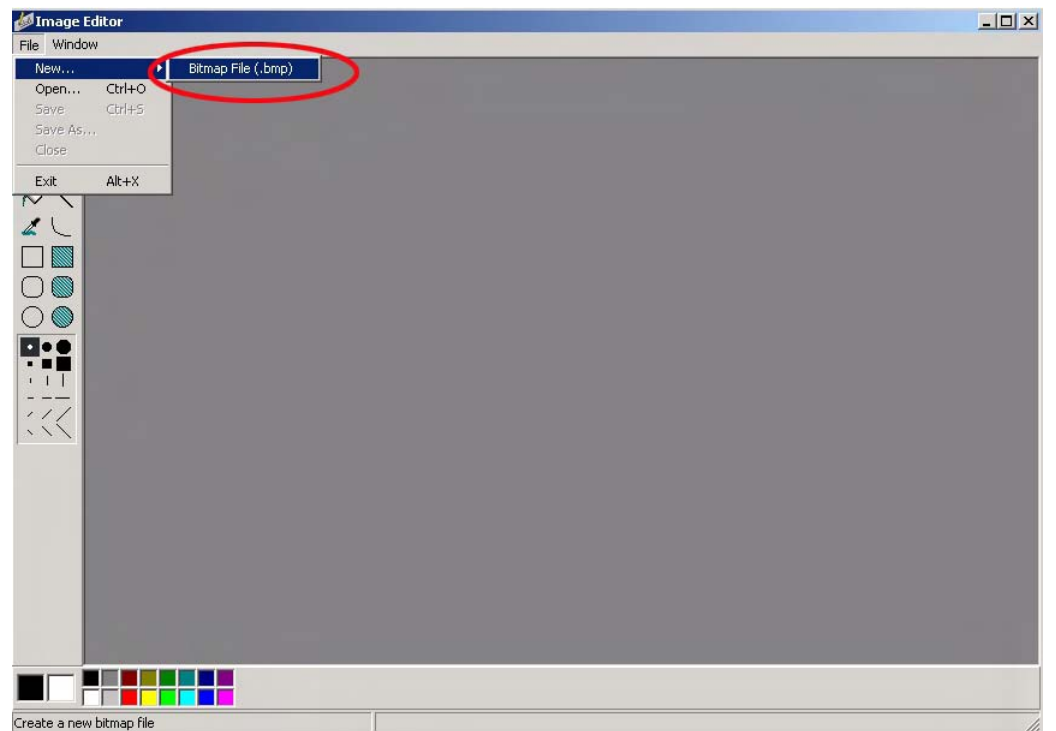
## Advanced Text Messaging

### Insert Bitmap file

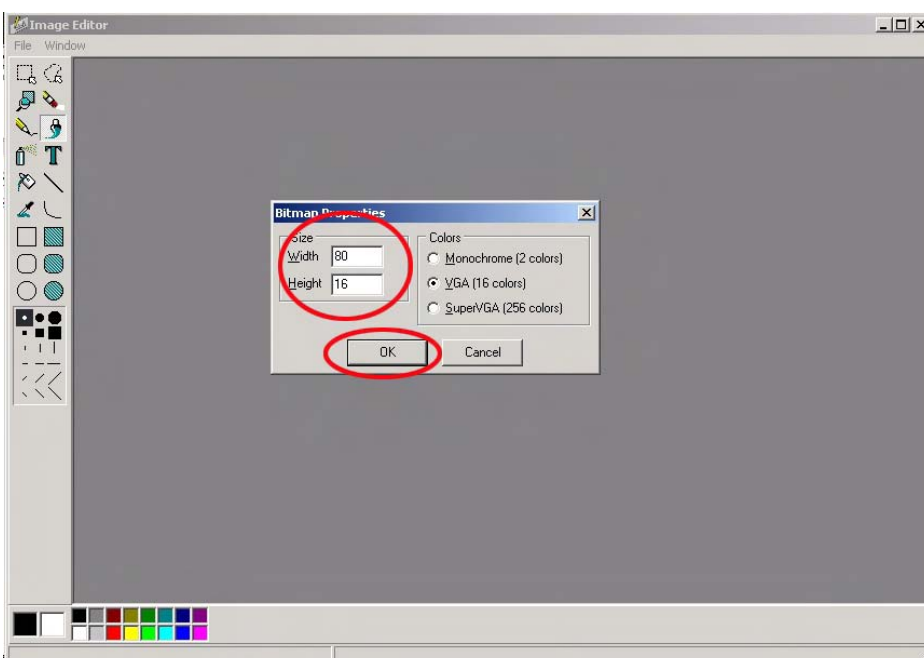
**Step1** Click on “ImageEdit”.



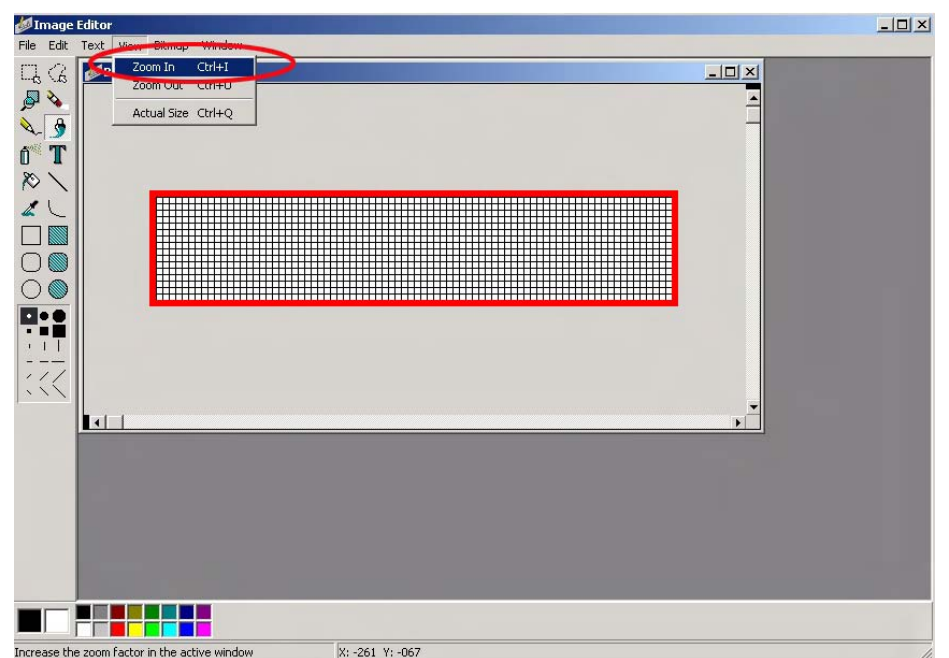
**Step2** Click “Bitmap File”.



**Step3** Set size and color for picture according to real size of your sign. Click “OK”.

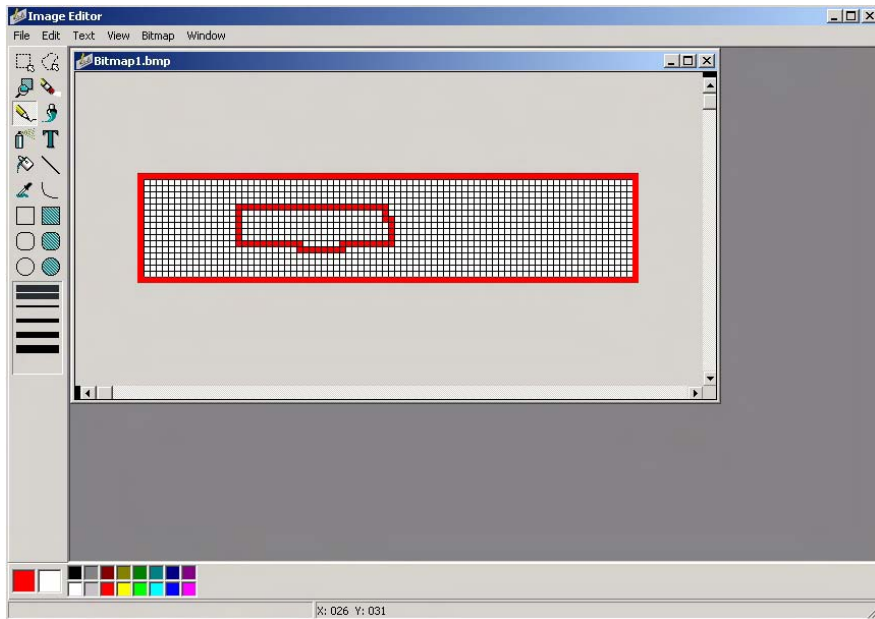


**Step4** Click “zoom in” continuously to enlarge the edit area

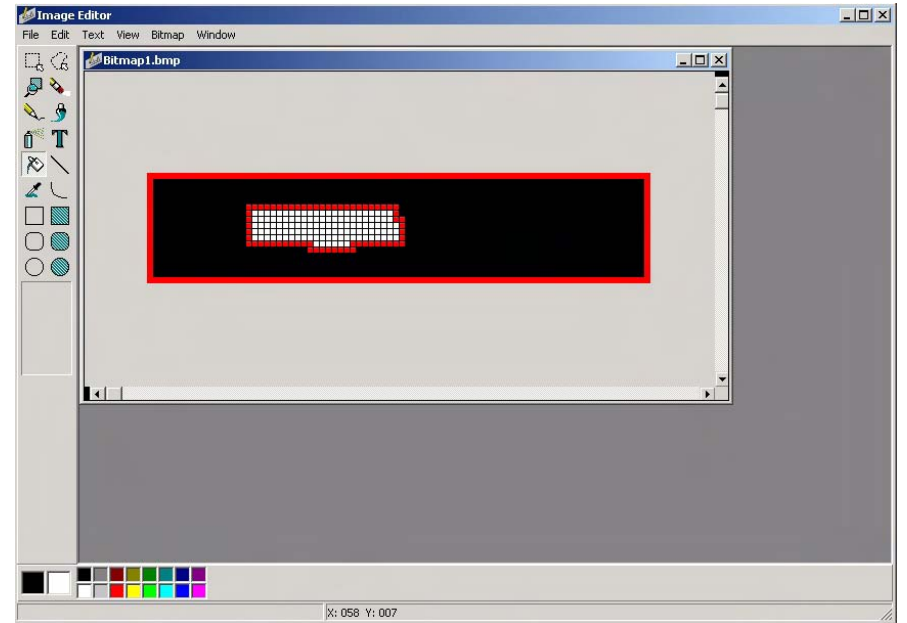




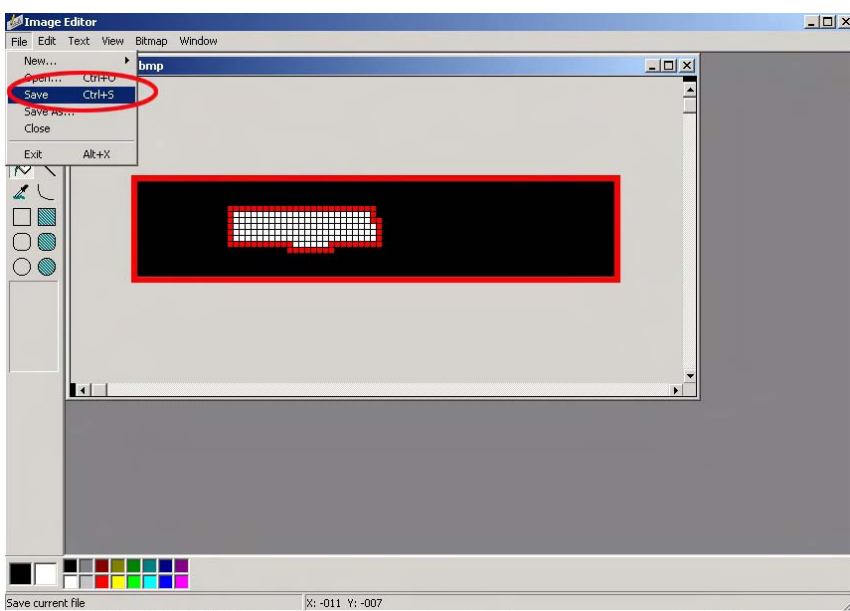
**Step5** Draw picture in the edit area.



**Step6** Fill the background with black color.



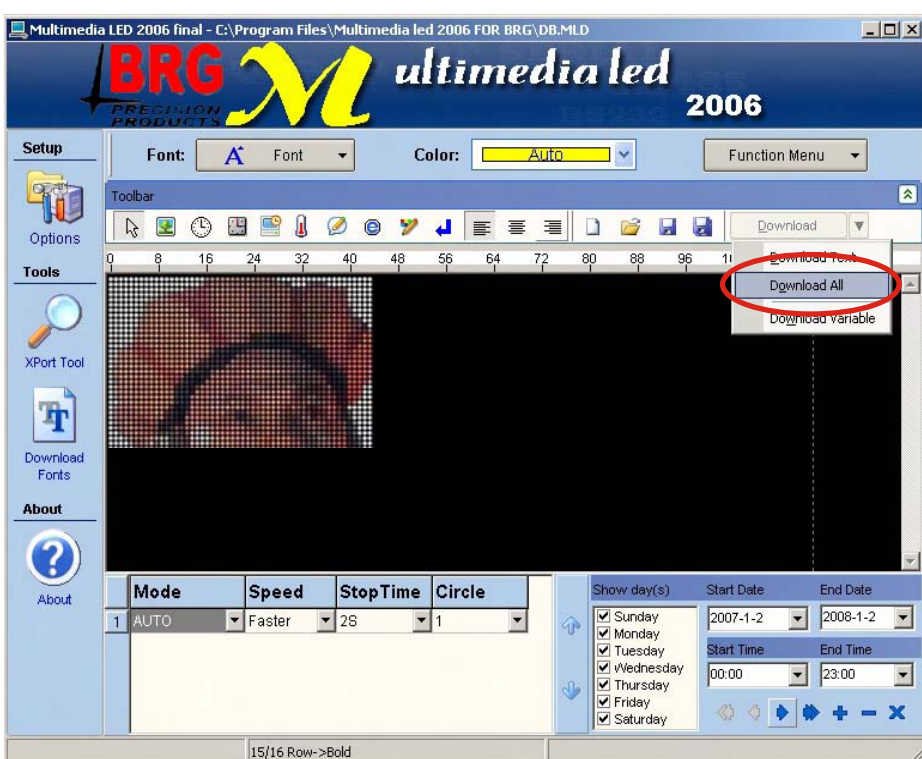
**Step7** Click “Save” to save the picture onto PC as \*.BMP file.



**Step8** Click  to open \*.BMP file.



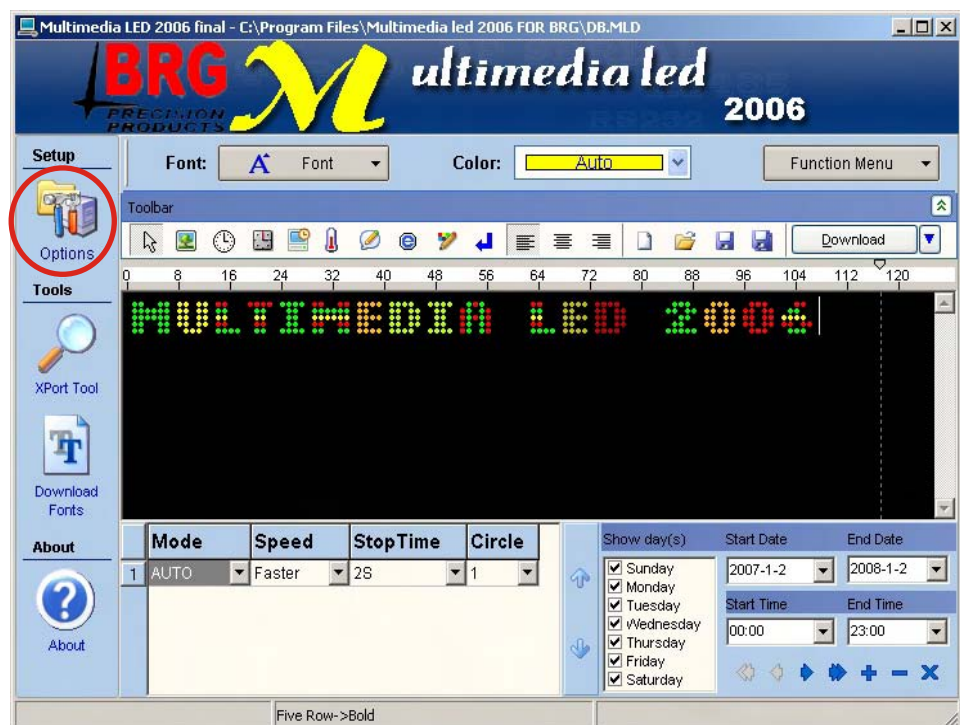
**Step9** Click “Download All”.



 Insert real-time clock



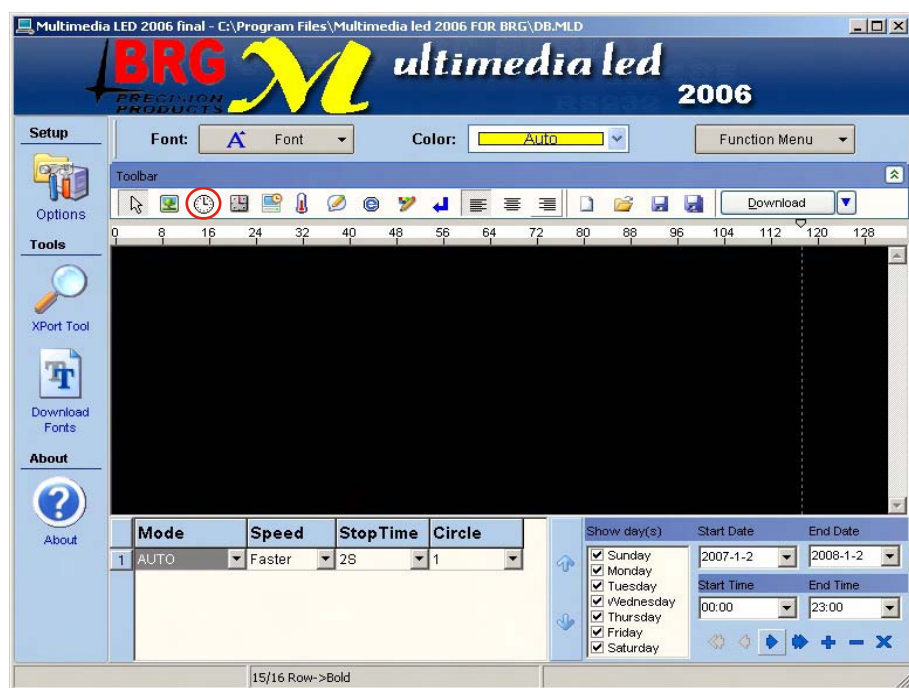
**Step1** Click .



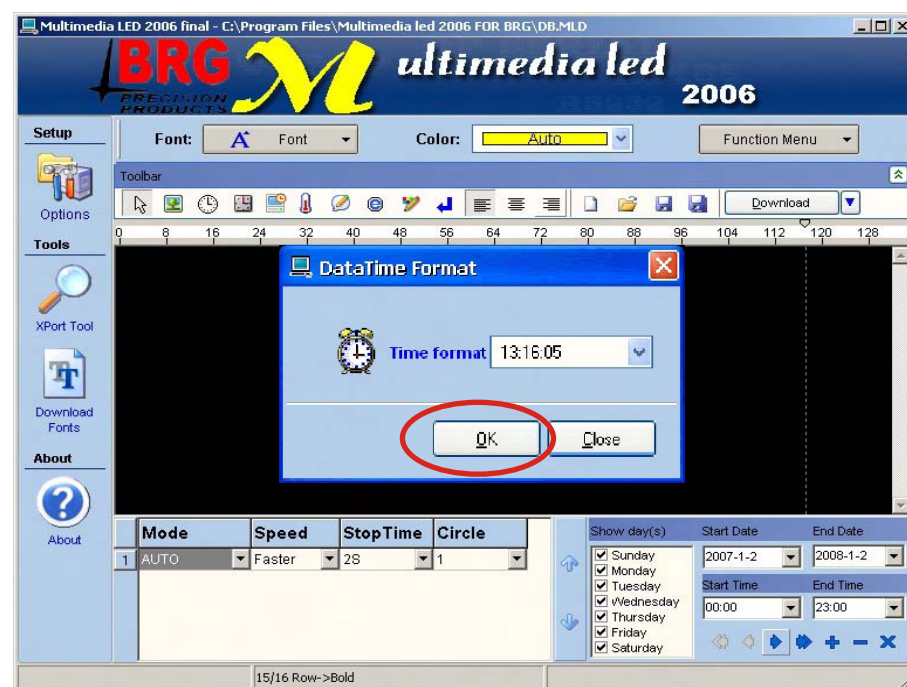
**Step2** Click “Download Time”, then click “OK”.



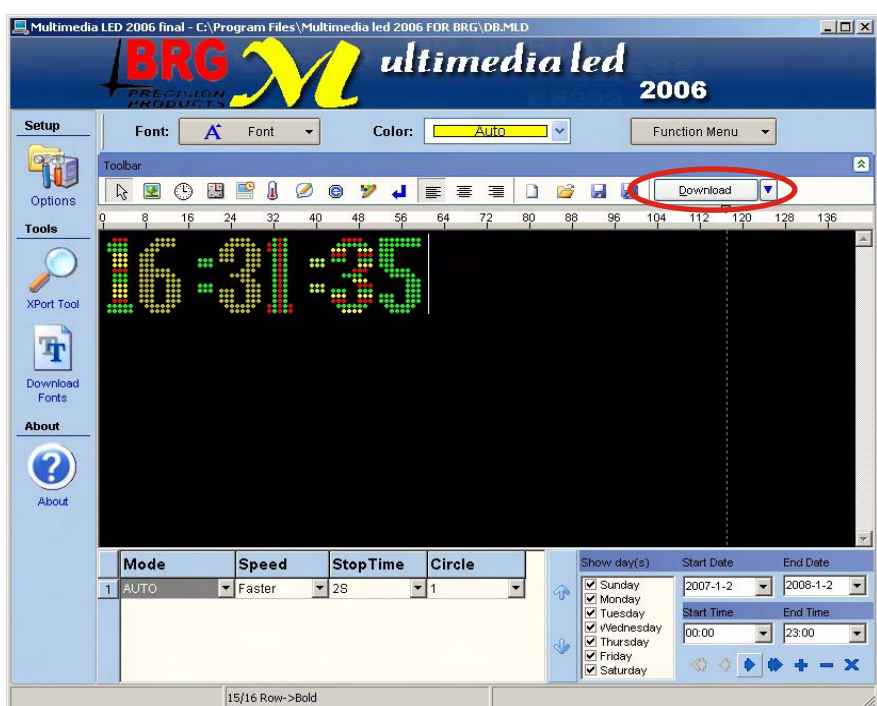
**Step3** Click .



**Step4** Select time format, then click “OK”.



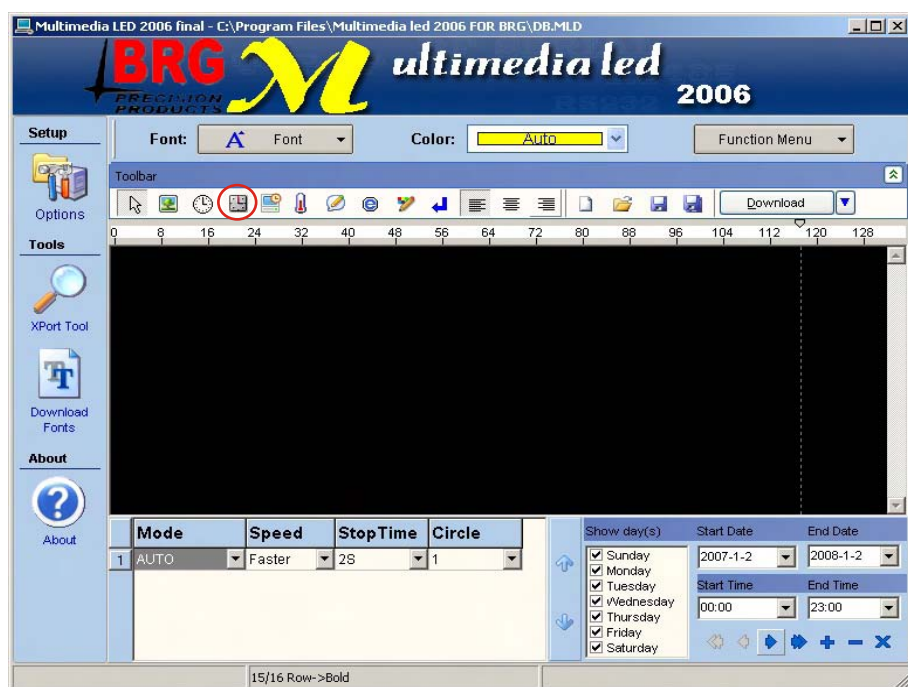
**Step5** Click “Download”.



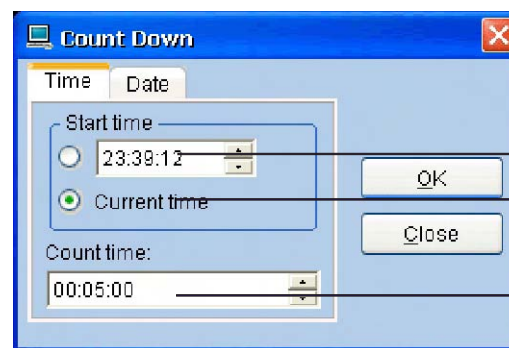
 Insert countdown



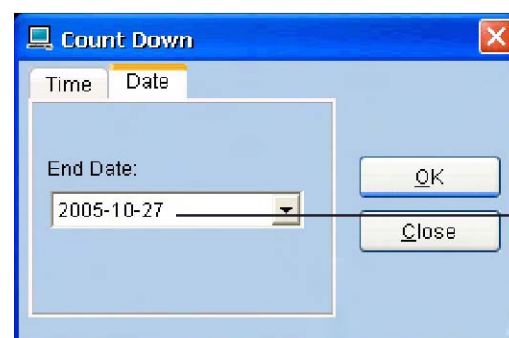
**Step1** Click  .



**Step2** Select countdown time or date format , then click “OK”.

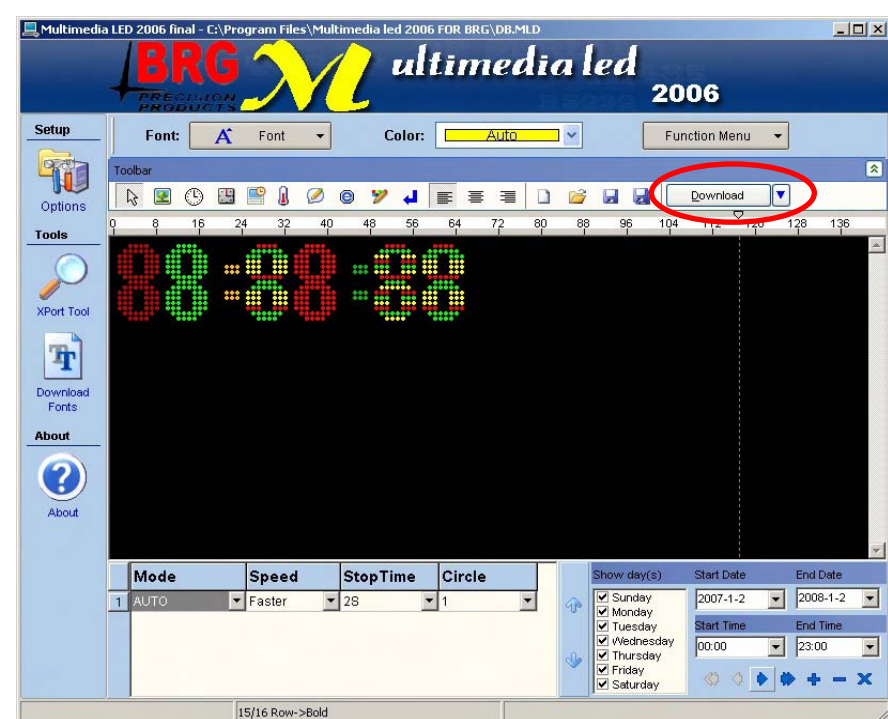


Select when to start to countdown  
Start to countdown from present time  
Select how long countdown last



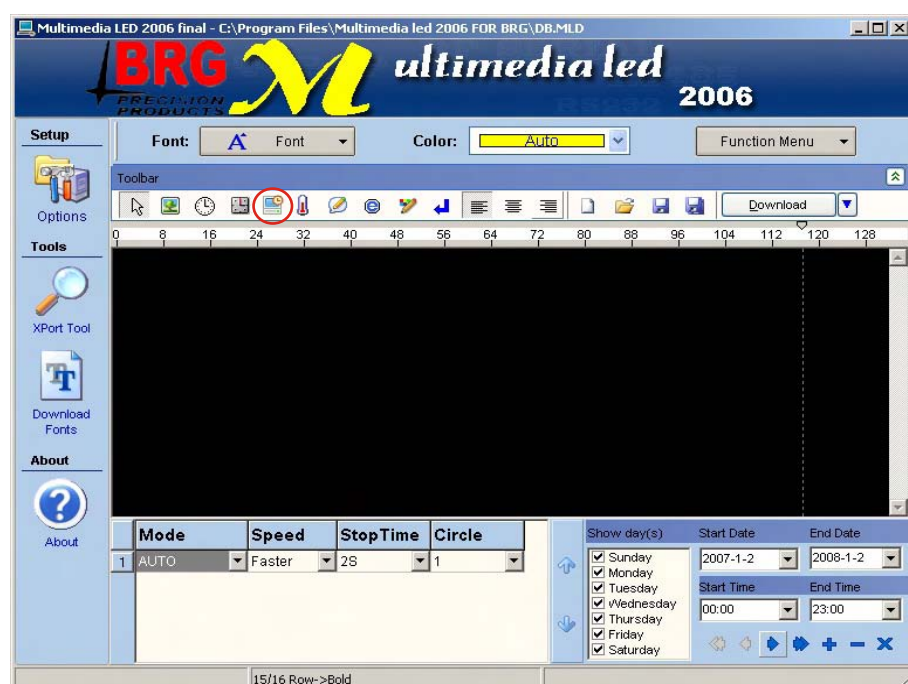
Select which date countdown ends

**Step3** Click “Download”.

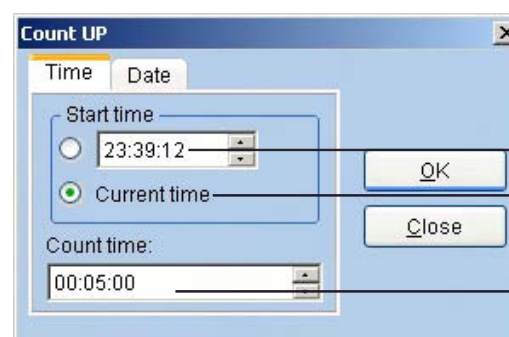


## Insert countup

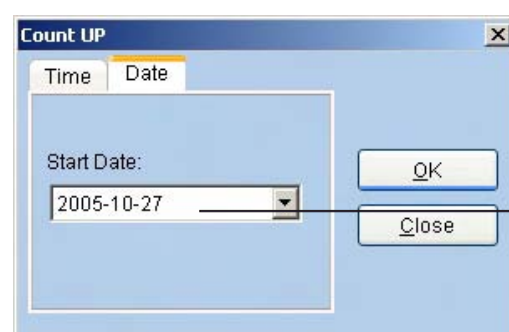
**Step1** Click  .



**Step2** Select countup time or date format , then click “OK”.



Select when to start to countup  
Start to countup from present time  
Select how long countup last



Select which date countup ends



Step3

Click “Download”.



## Insert temperature

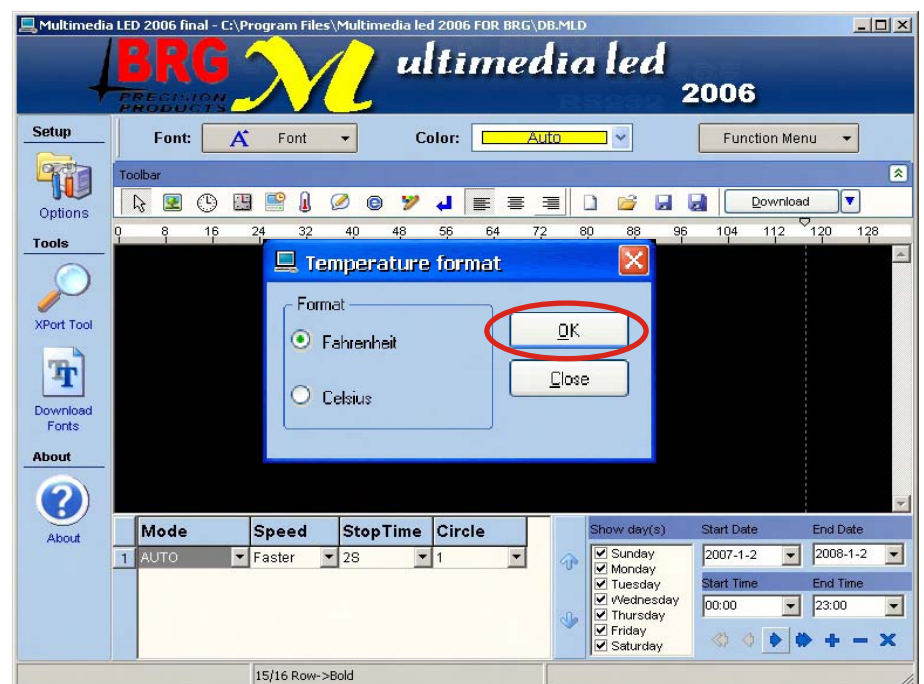
Note: This function need hardware to work.

Step1

Click .

Step2

Select temperature format , then click “OK”.



Step3

Click “Download”.

## Insert variable

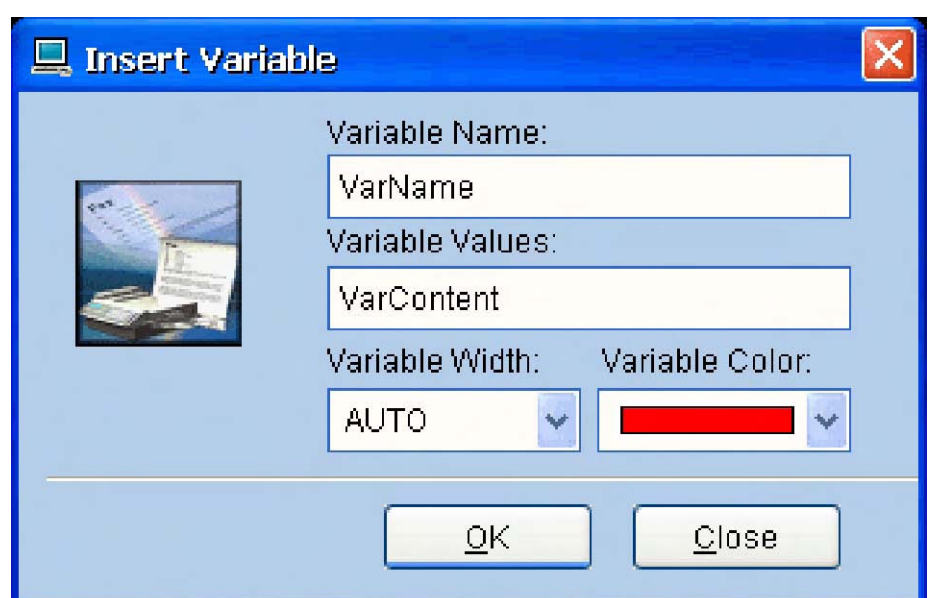
Step1

For example, type “Stock A UP”, click  to insert variable at the end of message.



Step2

Fill in blank and click “OK”.



Step3

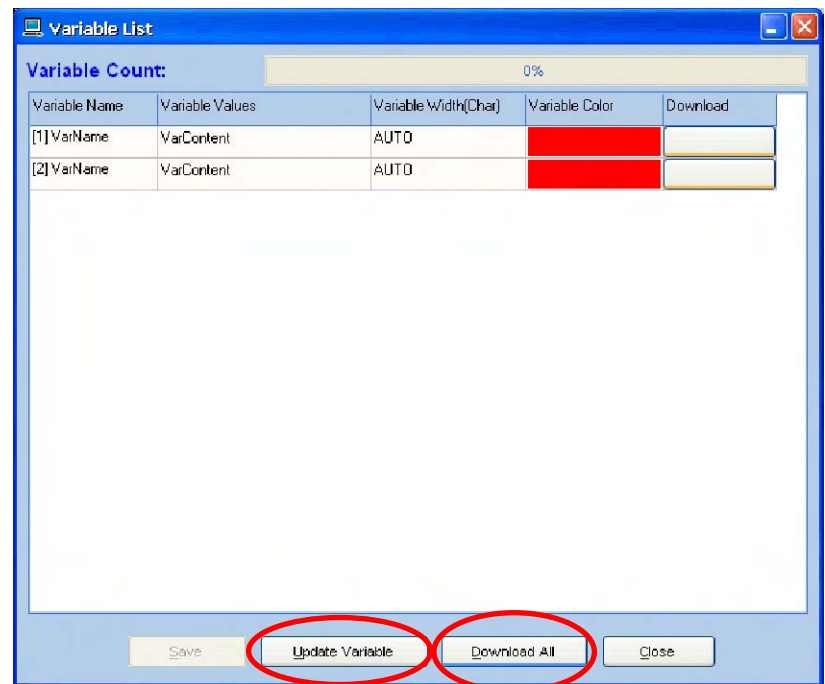
Type “Stock B UP” , repeat step 2 and 3.



**Step4** Click “Download Variable”.



**Step5** Click “Update Variable”, then click “Download All”, finally click “OK”, and close “Variable List” window.



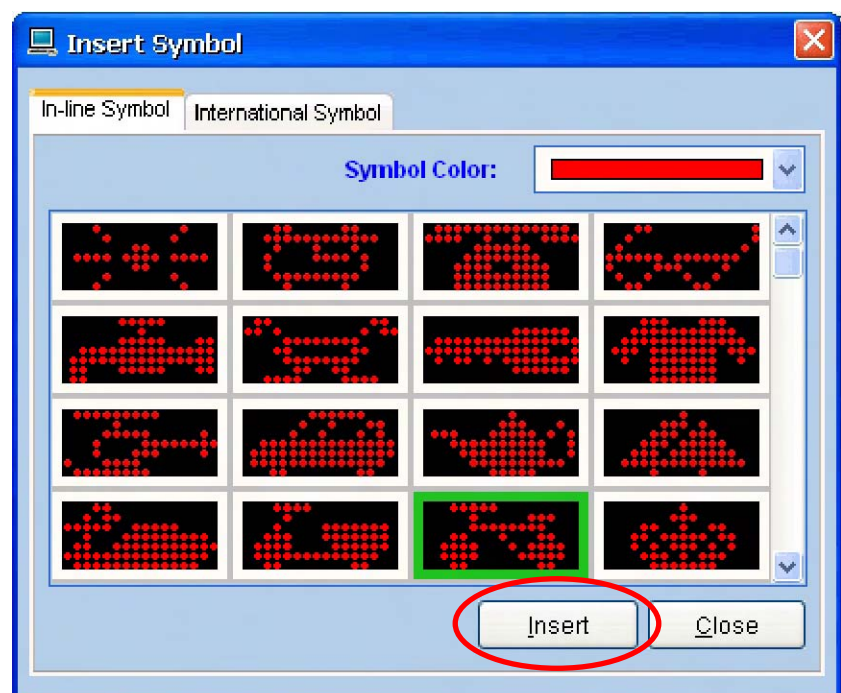
**Step6** Click “Download”.

## Insert symbol

**Step1** Click .



**Step2** Select one symbol, then click “Insert”. Close the “Insert Symbol” window.



**Step3** Click “Download”.



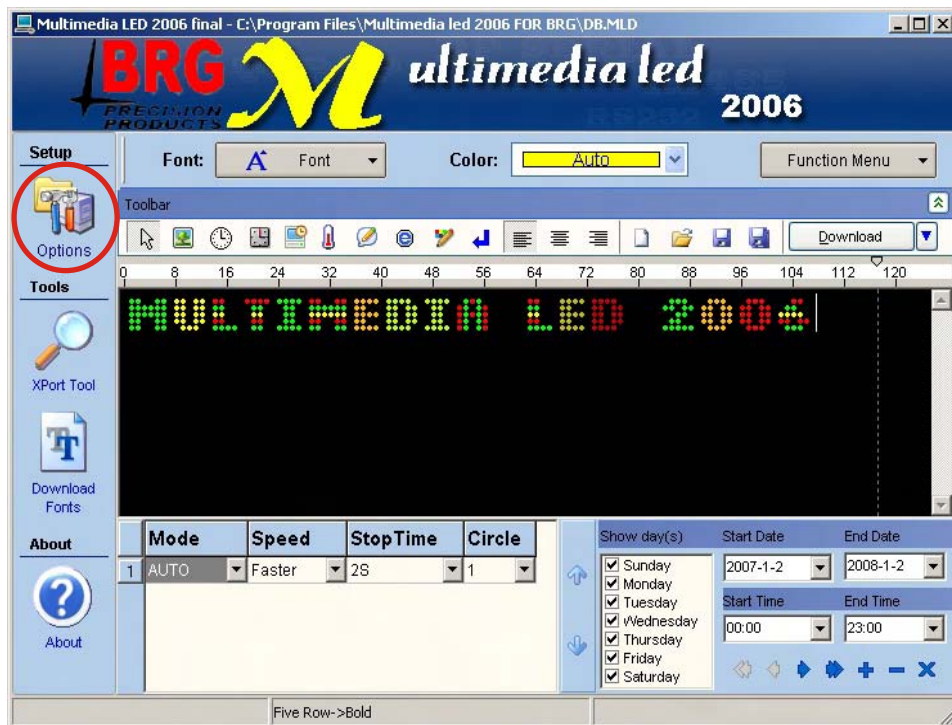


## Pre-define message show day(s) and time

Note: In this operation, you must select expand mode under “Led state”.

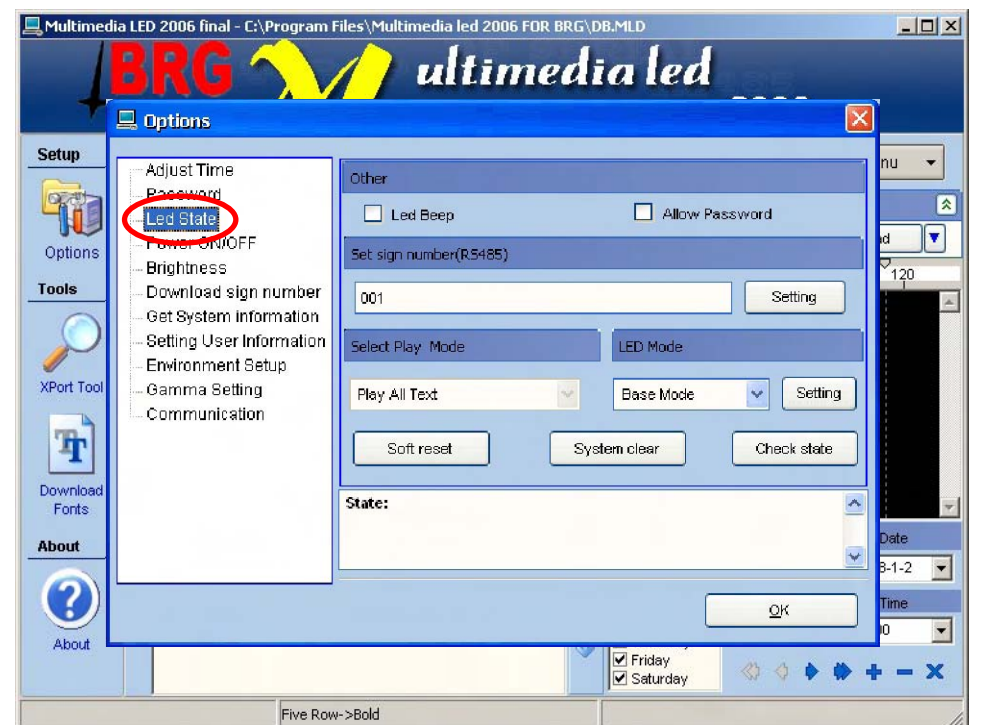
**Step1**

Click “Options”.



**Step2**

Click “Led State”.

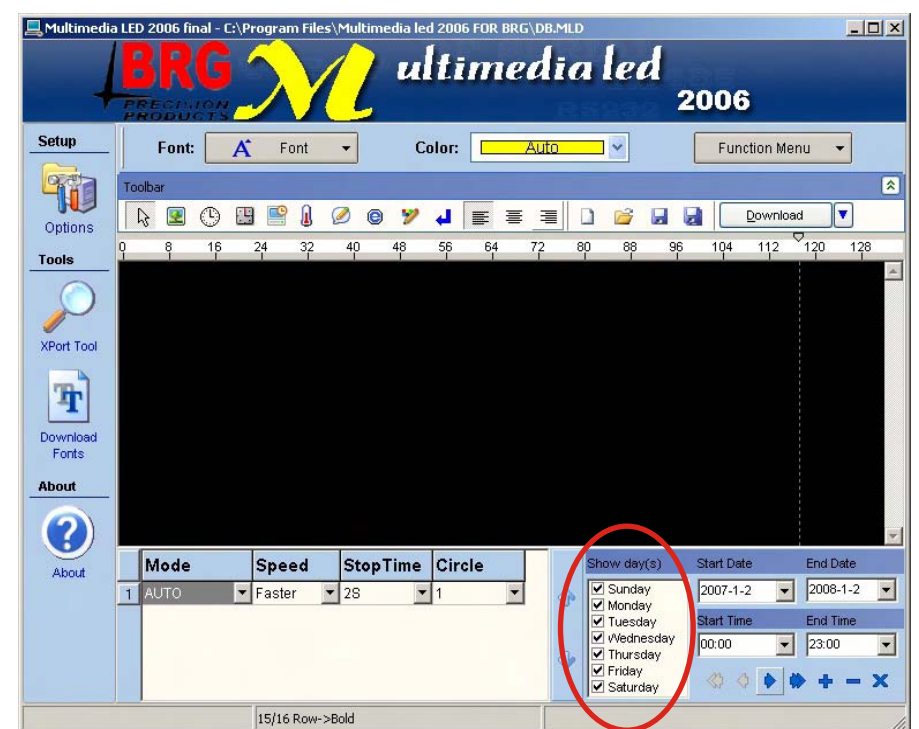
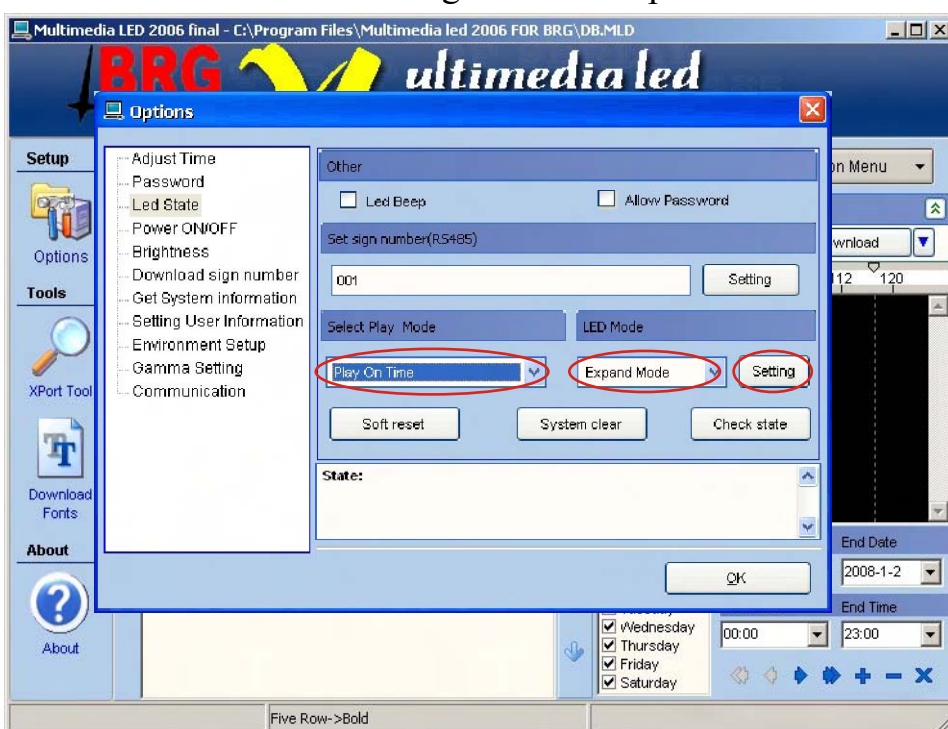


**Step3**

Select “Expand Mode”, under “LED Mode”,  
Select “Play On Time” under “Select Play Mode”,  
then click “Setting”. Close “Options” window.

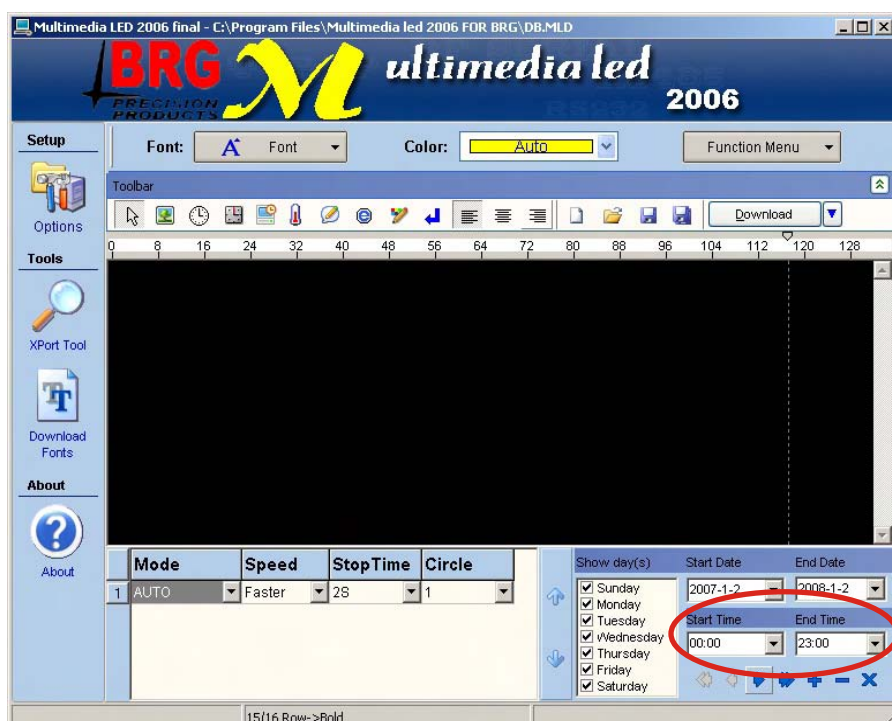
**Step4**

Select message show days.



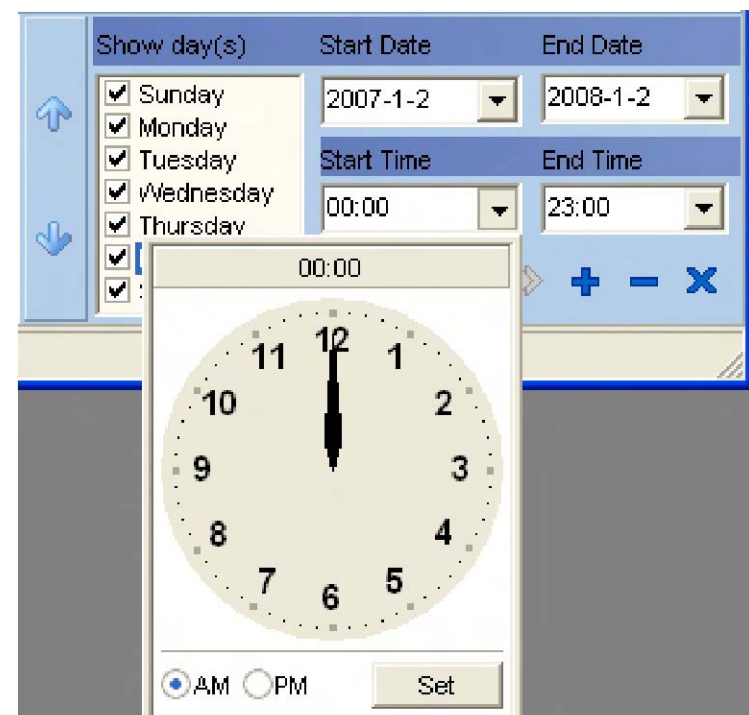
**Step5**

Click down arrow under “Start Time”.



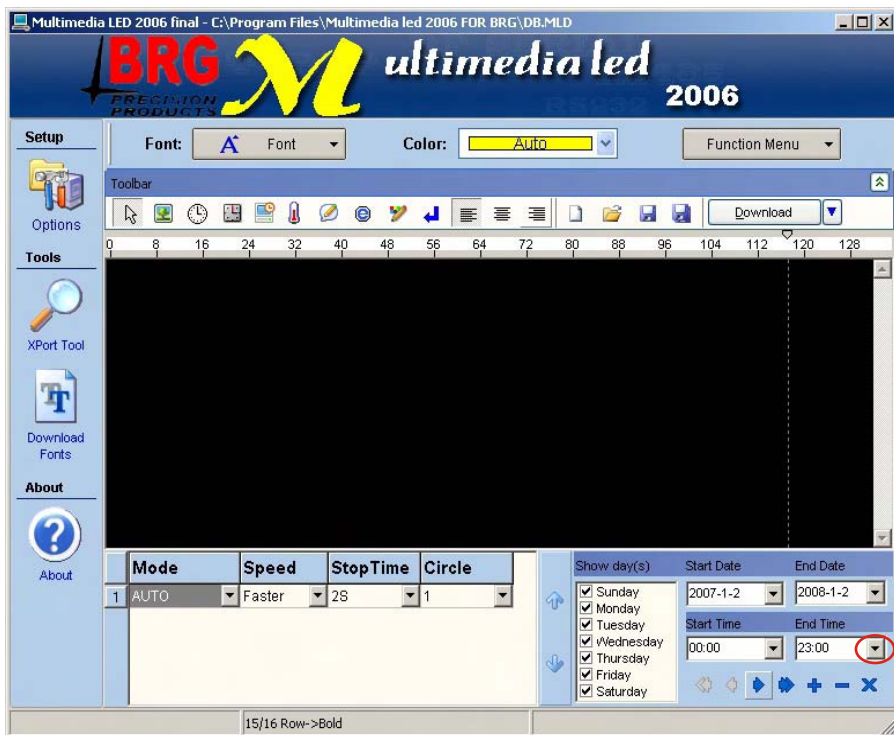
**Step6**

Select Start Time, then click “Set”.

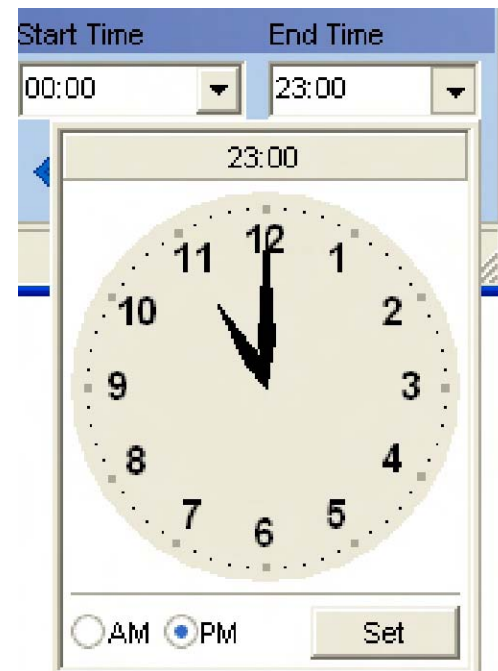




**Step7** Click down arrow under “End Time”.



**Step8** Select End Time, then click “Set”.



**Step9** Click “Download”.

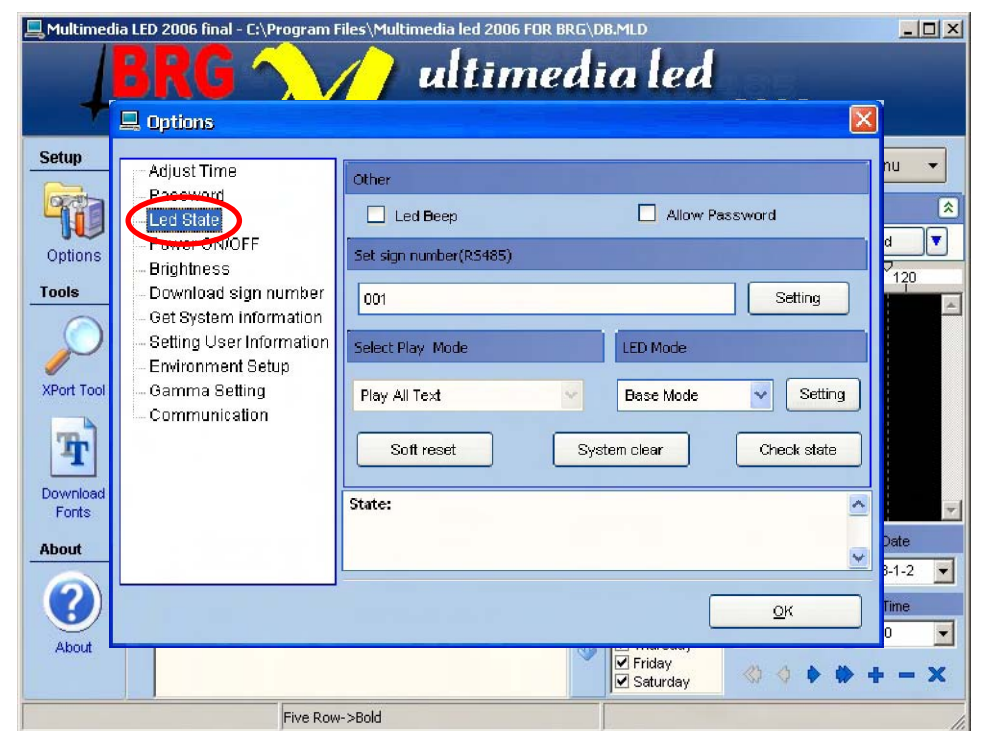
## Pre-define power on/off

Note: In this operation, you must select expand mode under “Led state”.

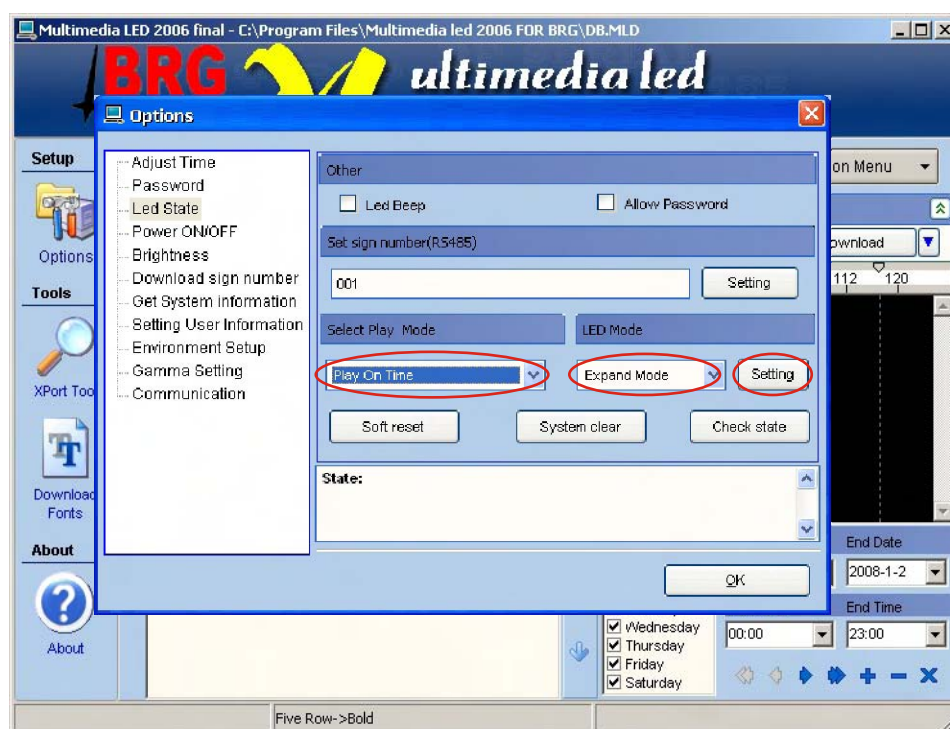
**Step1** Click “Options”.



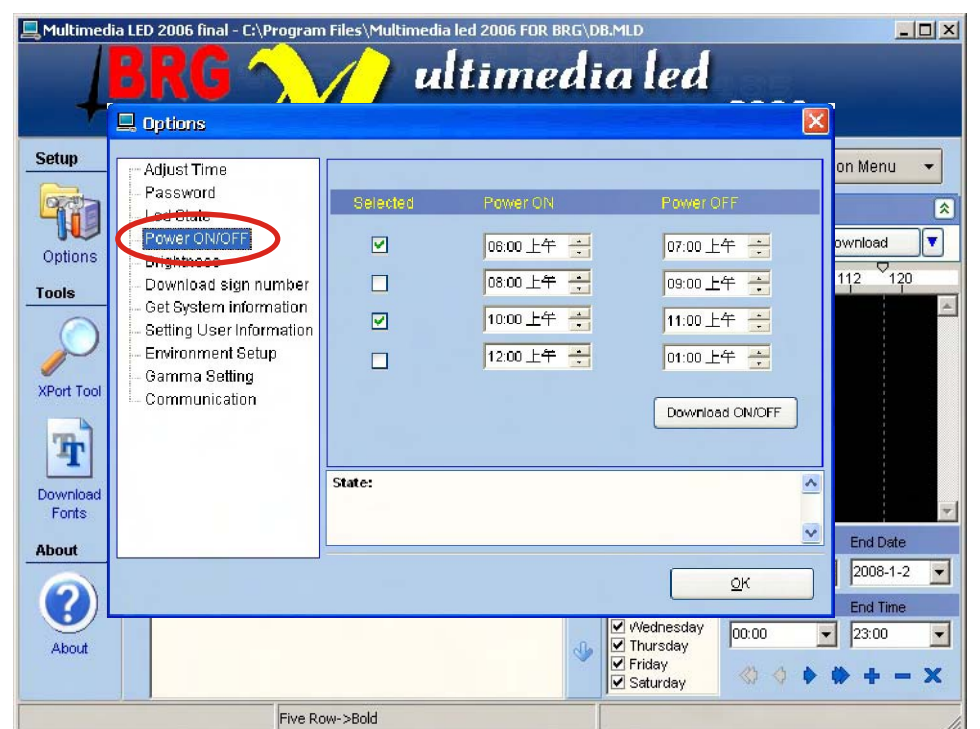
**Step2** Click “Led State”.



**Step3** Select “Expand Mode”, under “LED Mode”, Select “Play On Time” under “Select Play Mode”, then click “Setting”.



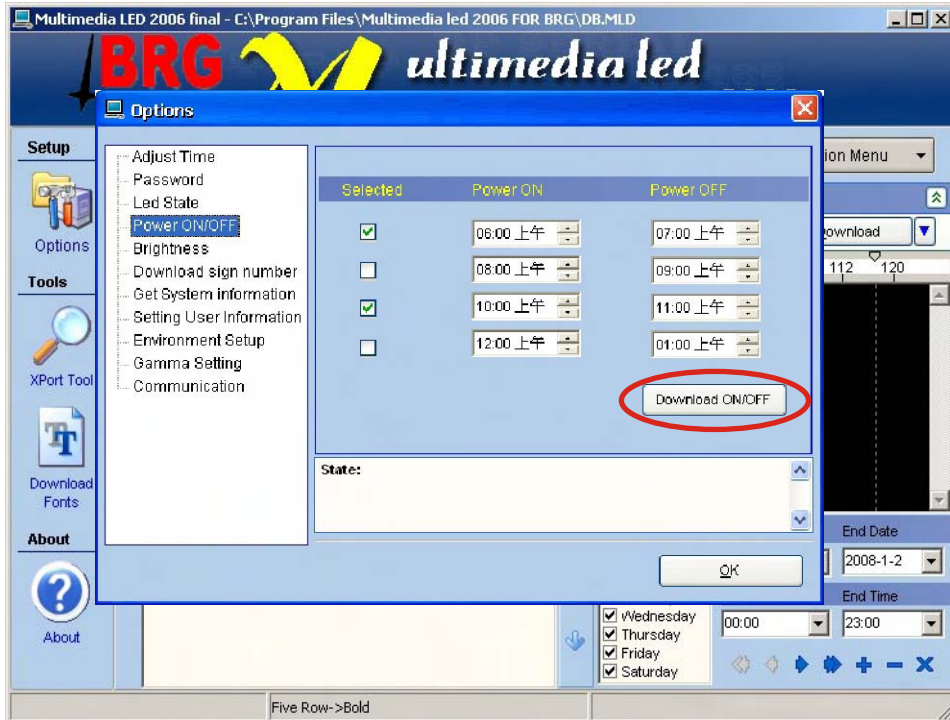
**Step4** Click “Power ON/OFF”.





**Step5** Select power on/off time, then click “Download ON/OFF”, finally click “OK”.

**Step6** Click “Download”.

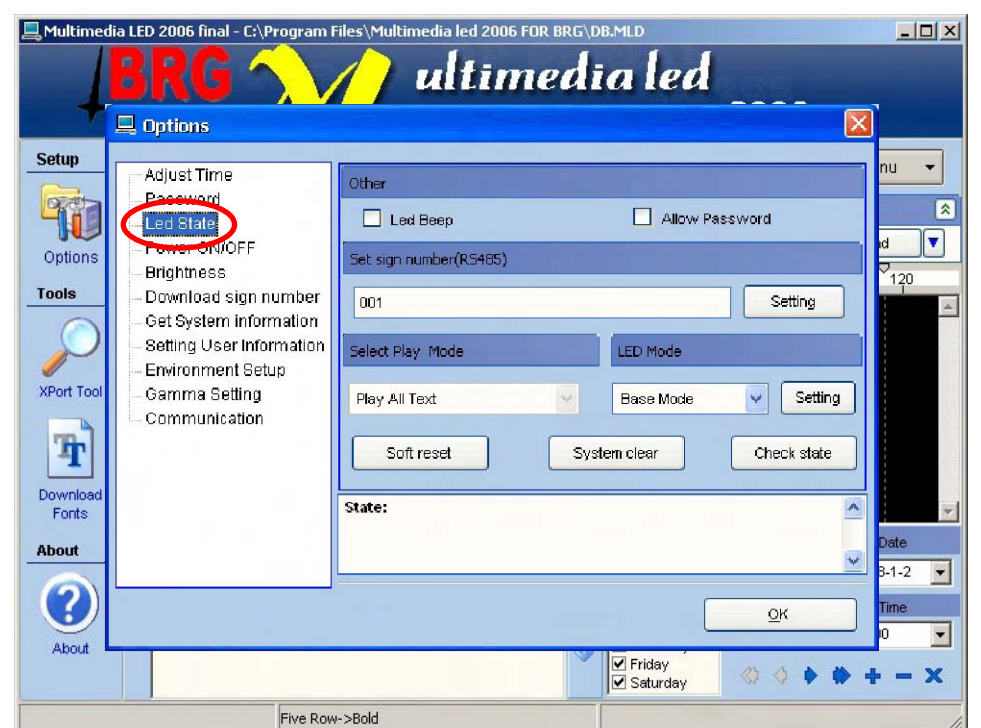
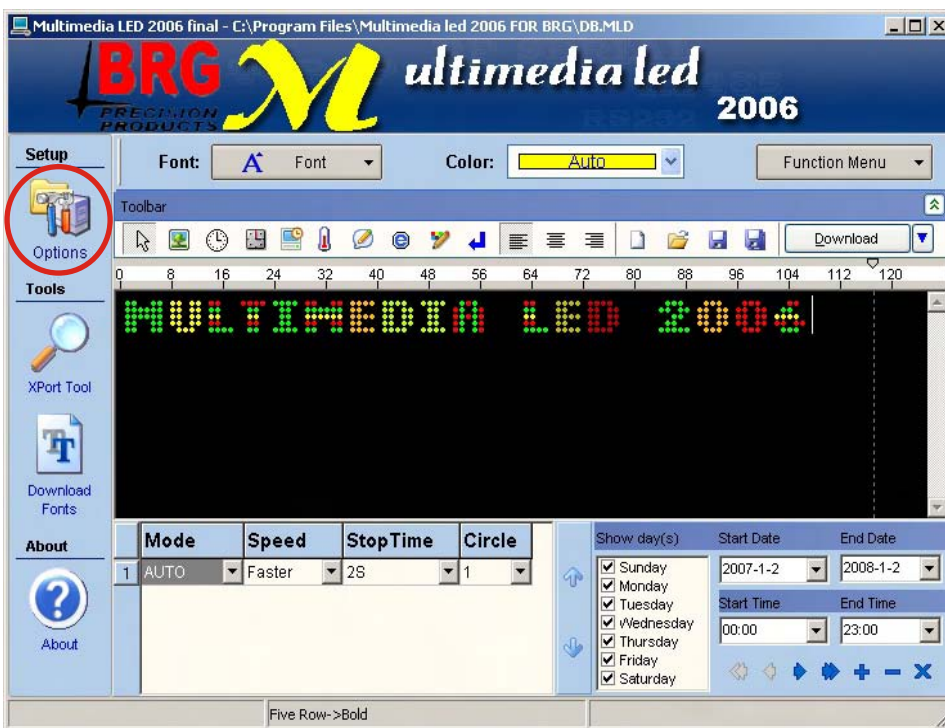


## Adjust brightness

Note: In this operation, you must select expand mode under “Led state”.  
Note: Need hardware to work.

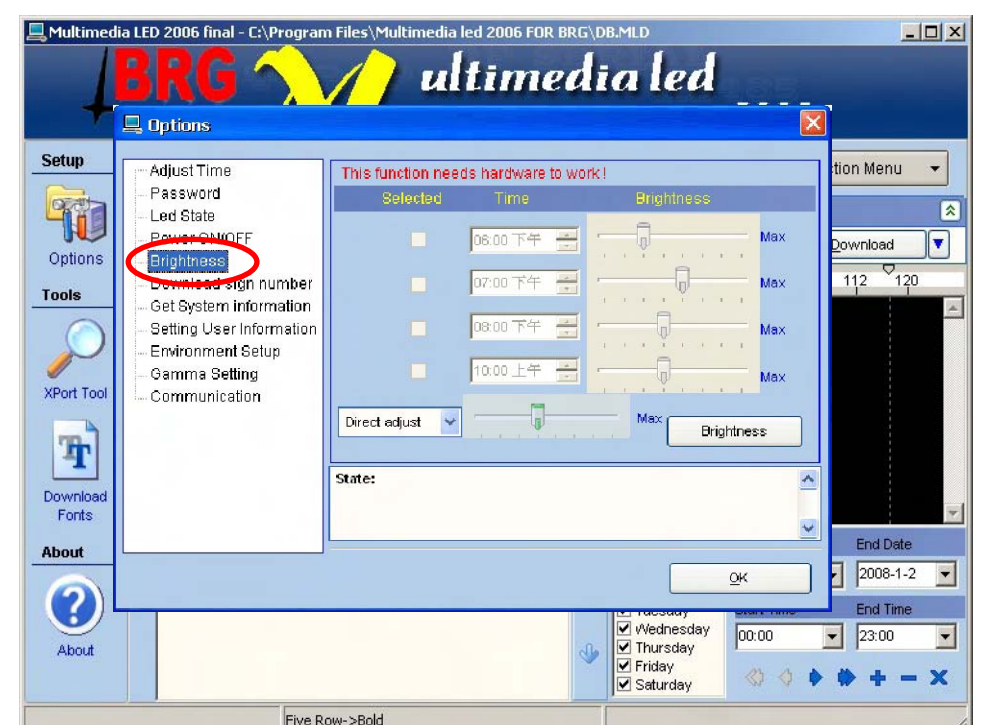
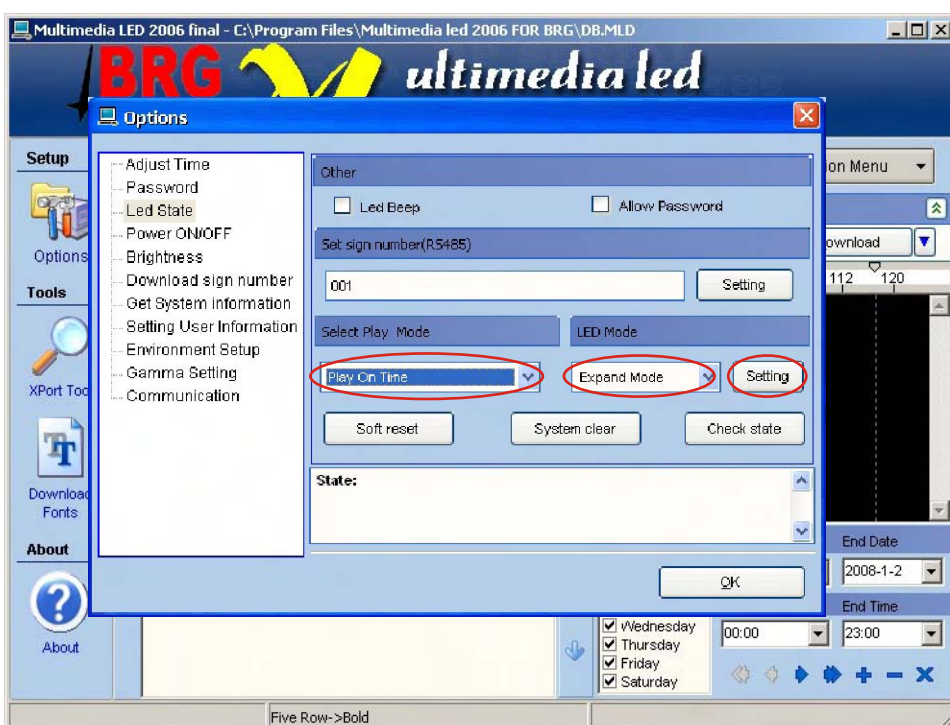
**Step1** Click “Options”.

**Step2** Click “Led State”.



**Step3** Select “Expand Mode”, under “LED Mode”,  
Select “Play On Time” under “Select Play Mode”,  
then click “Setting”.

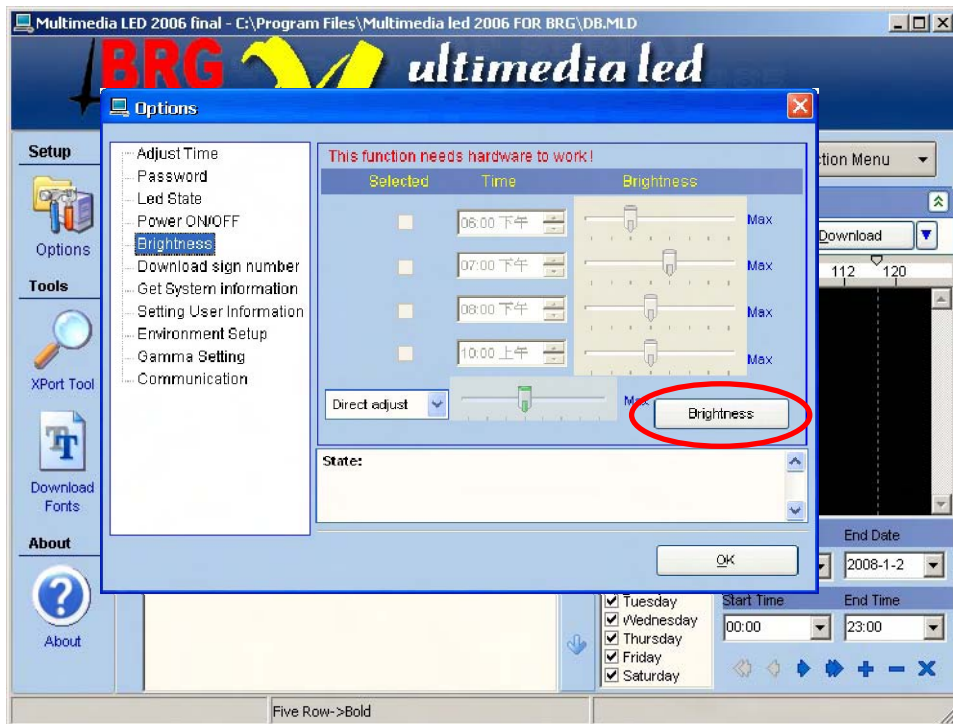
**Step4** Click “Brightness”.





**Step5** After adjust brightness, then click “Brightness” finally click “OK”.

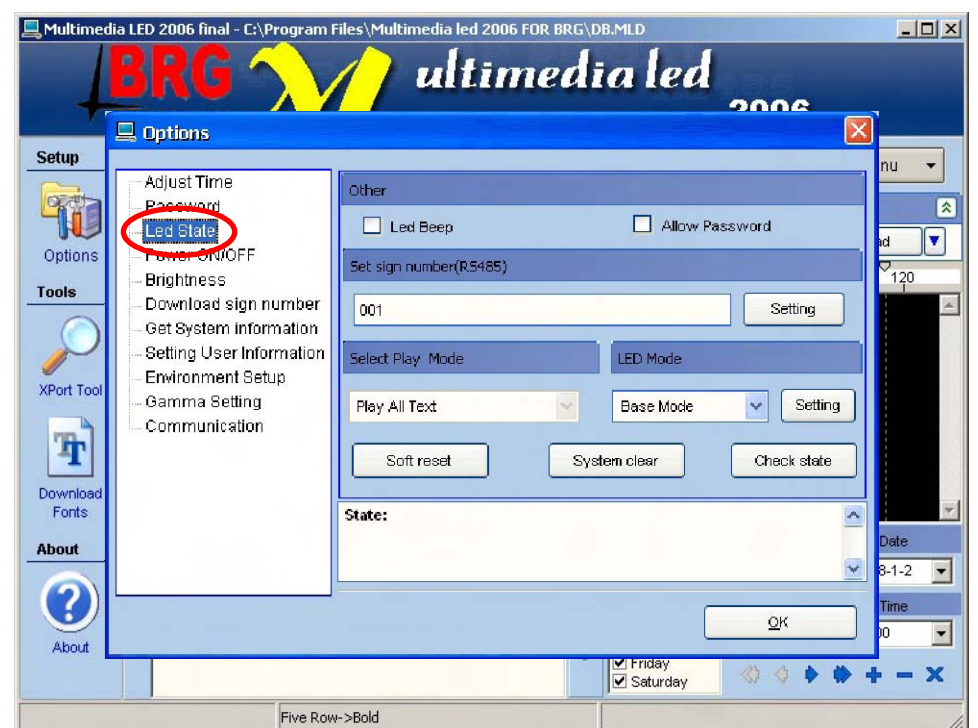
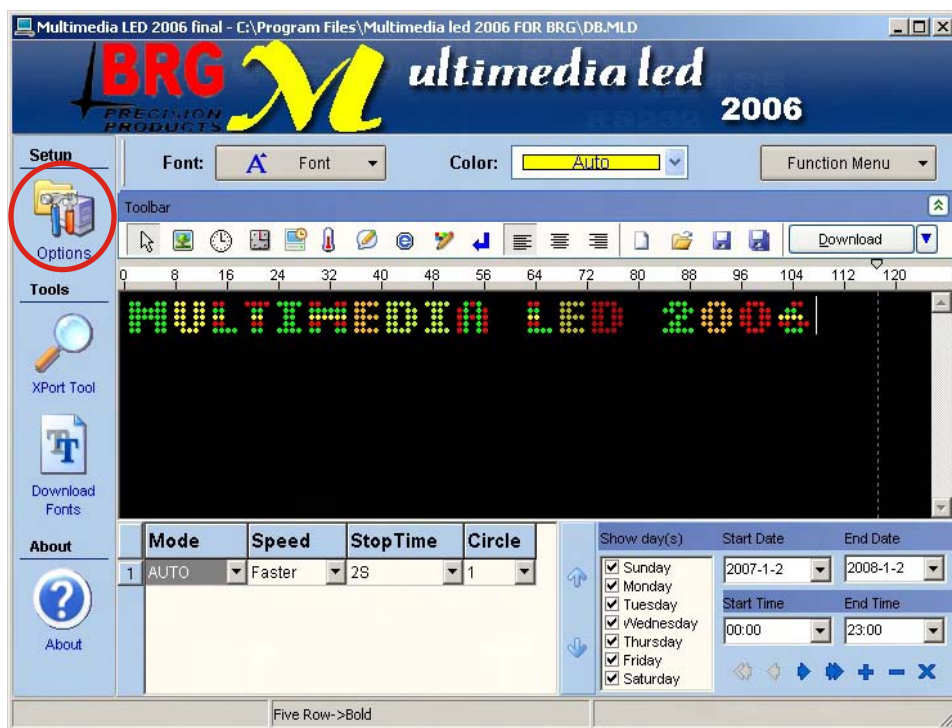
**Step6** Click “Download”.



## Set password

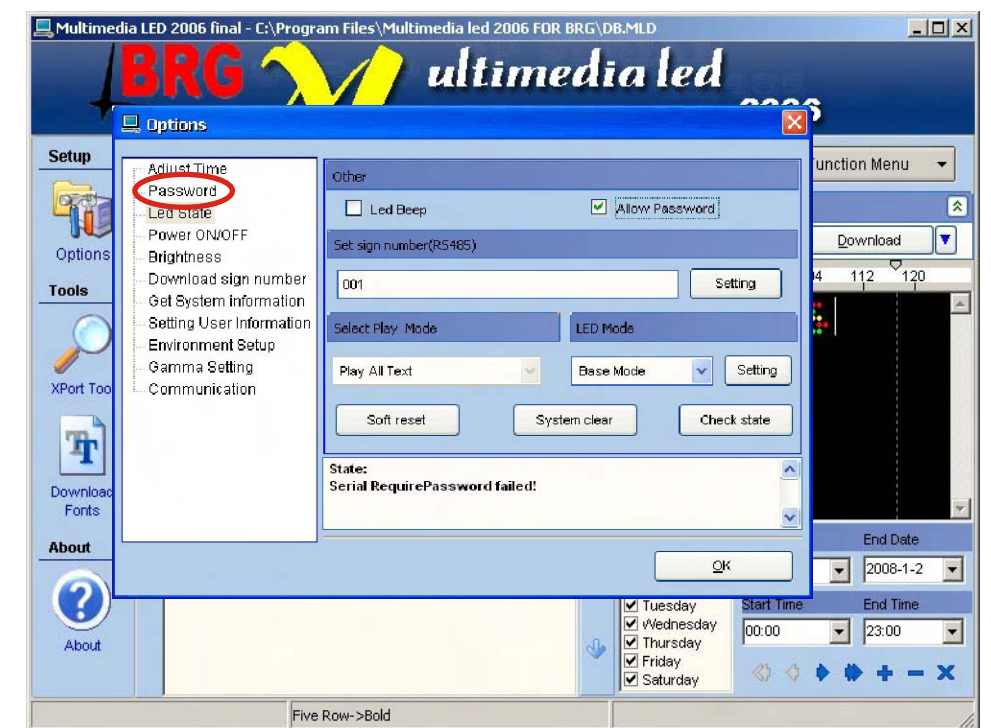
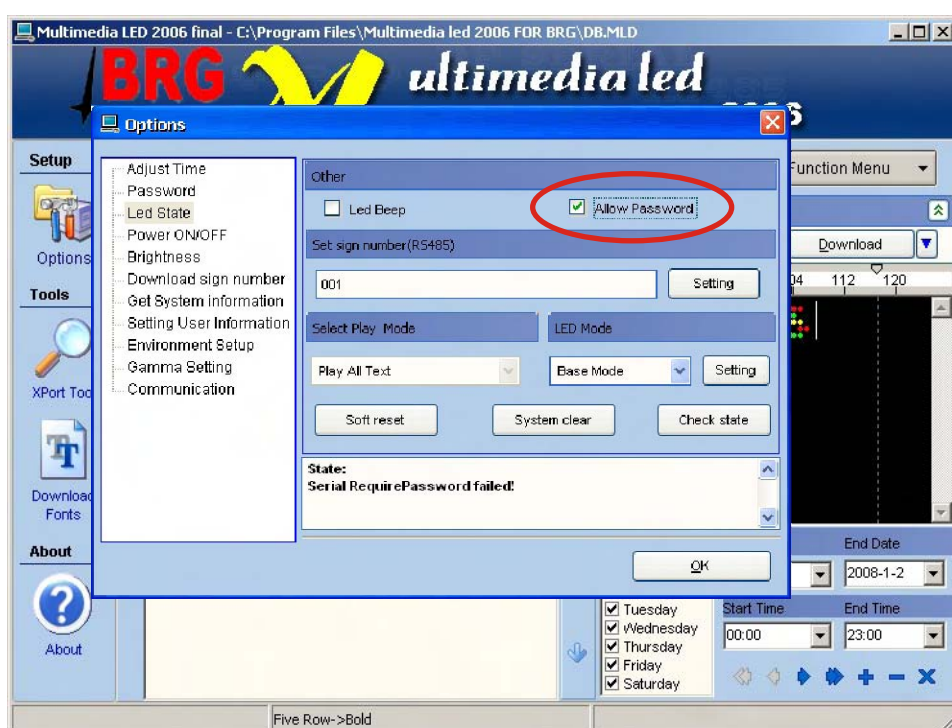
**Step1** Click “Options”.

**Step2** Click “Led State”.



**Step3** Tickle “Allow Password”.

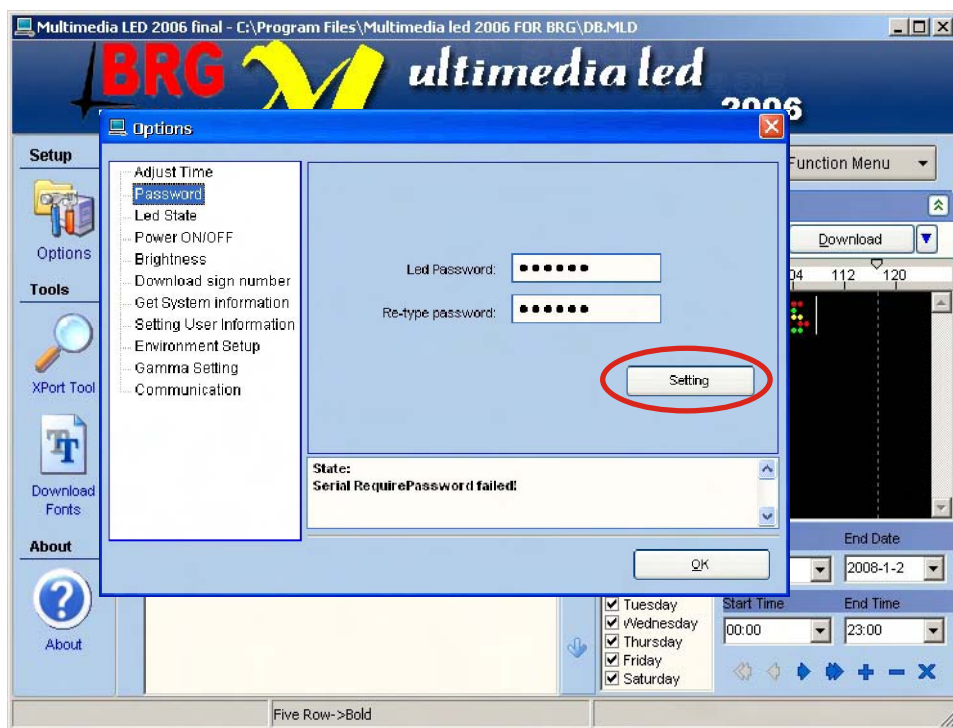
**Step4** Click “Password”.





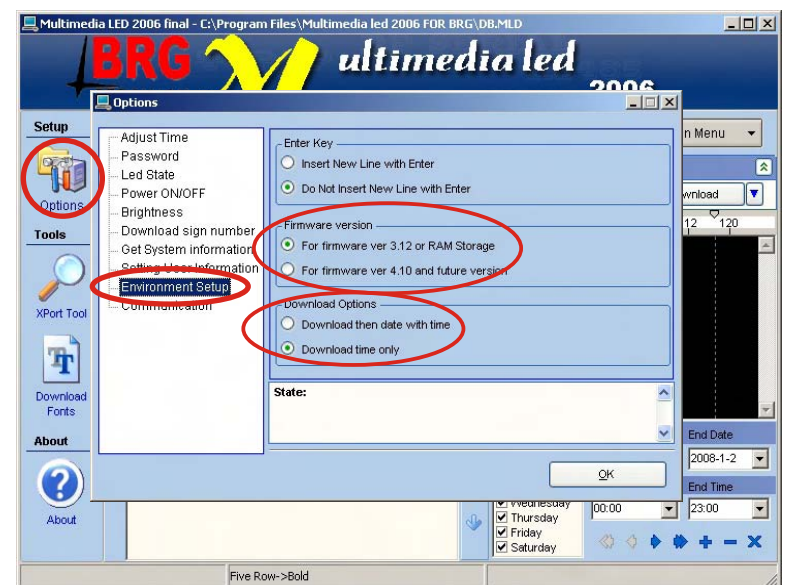
**Step5**

Type password, then click “Setting”, and finally click “OK”. Click “Download”.



### Send messages to sign

Before you send messages to sign, you should check that the download options of date or time whether consistent.



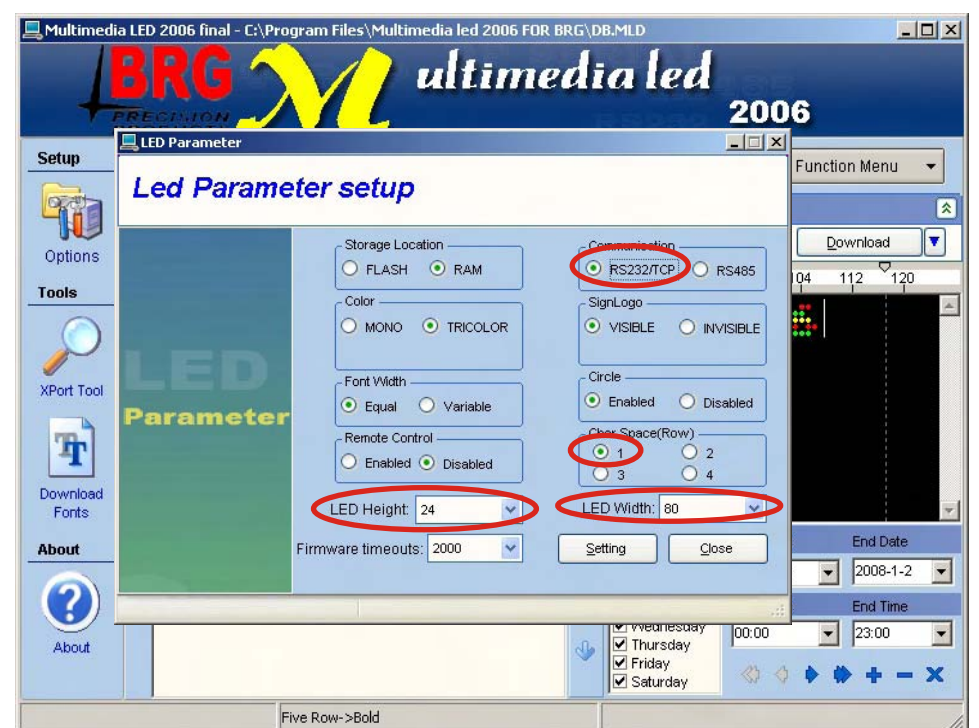
### Send messages to sign (RS232 communication)

**Step1**

Connect the sign with pc , see the connecting way in the below:

**Step2**


Click “CTRL+F3”.

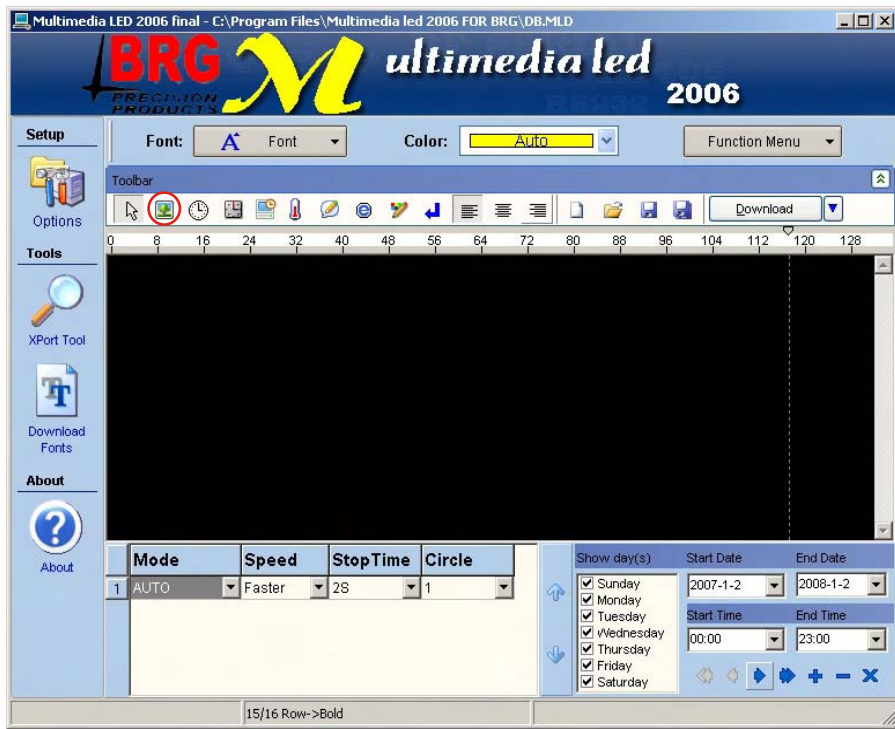


1. Select “RS232/TCP”
  2. Set up “LED Width” and “LED Height”, (For example, a sign of 80X24, then LED Width: 80, LED Height: 24)
  3. Select “Char Space (Row)” for “1”.
  4. Click “Setting”
- If appear “Serial Setting Parameter Successfully” then do the next, if not appear, then check the signs connection.





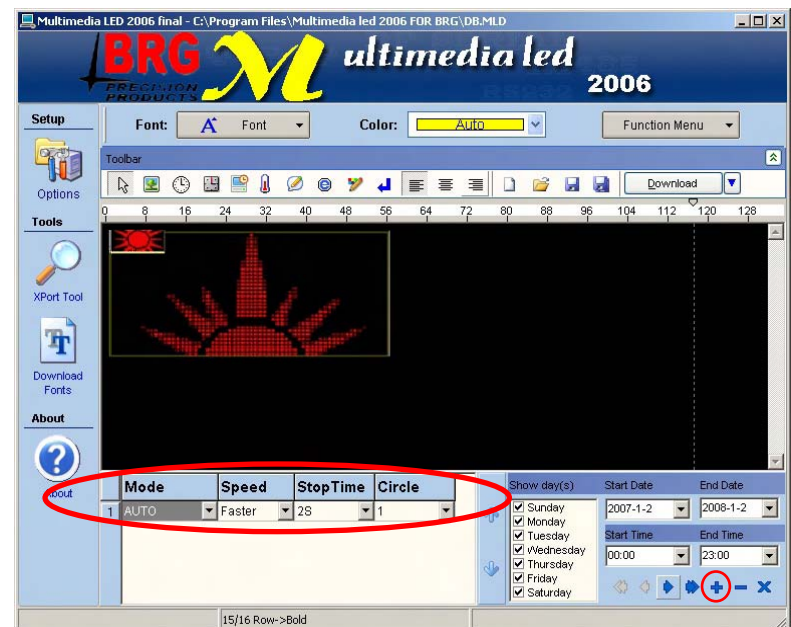
**Step3**

Insert a picture ".gif", (the picture's width and height less than or equal to 80\*24 dots), click 



Note: the inserted picture less than the sign's size, if not, will influence the displayed effect.

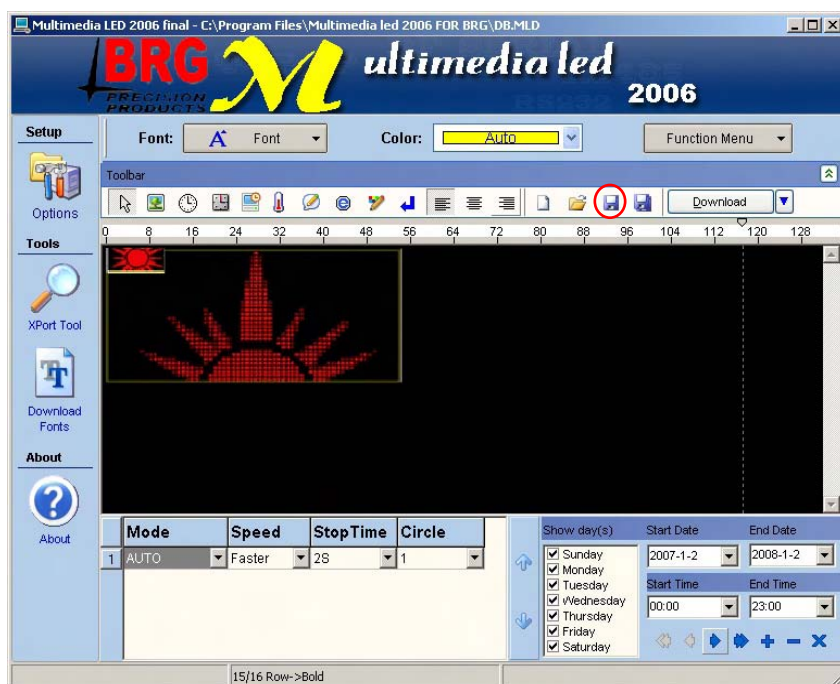
Click  If you want to send more than one picture to sign, you should click 



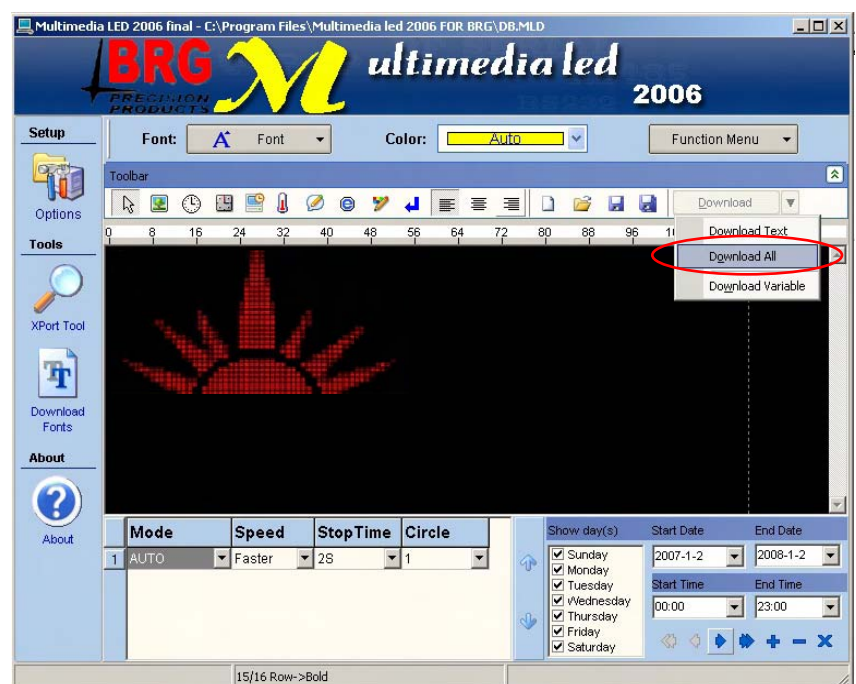
Other messages' set up reference to manual.

**Step4**

Click 

**Step5**

Click "Download All"



## Send messages to group signs-1 (RS485 communication)

Notes: signs communication mode should be RS485

**Step1**

Connect signs, set up sign number, see the connecting way in the below:

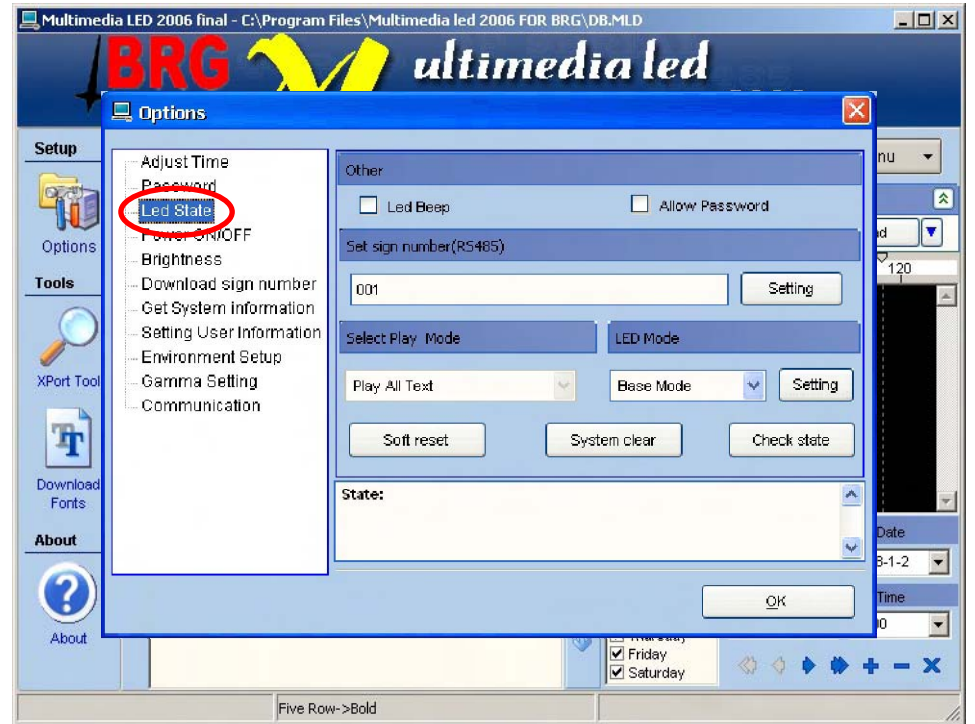




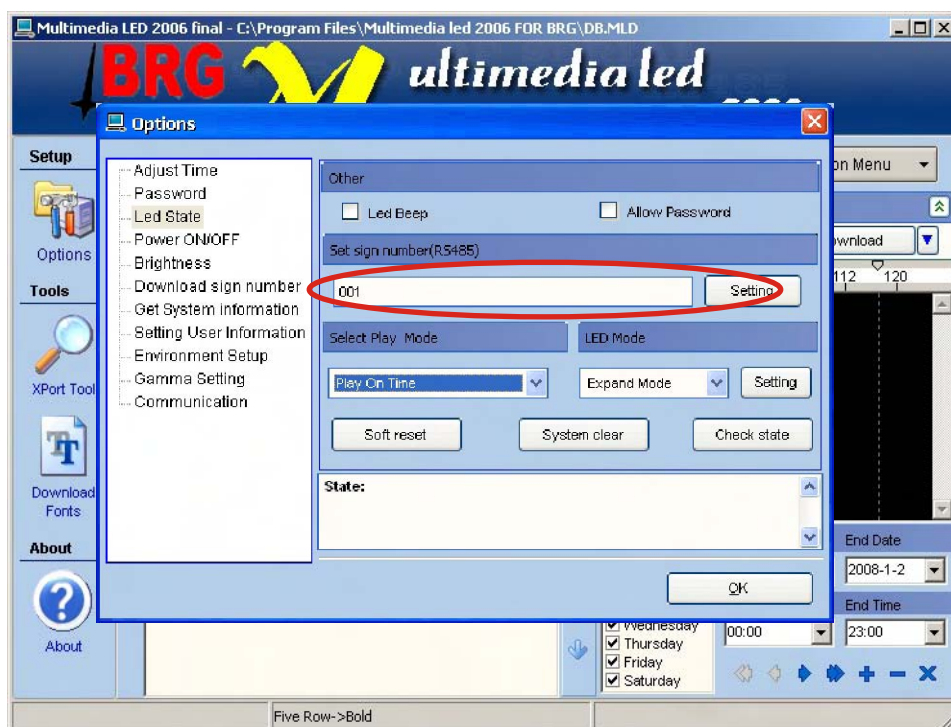
**Step2** Run software, click "options"



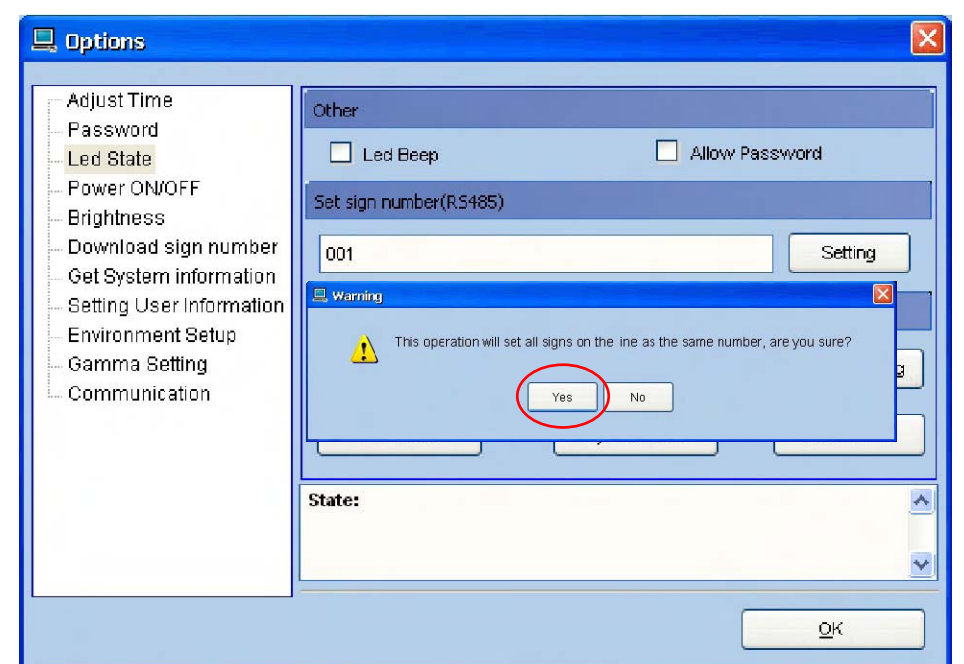
**Step3** Click "Led State".



**Step4** Set equipment number, then click "Setting".

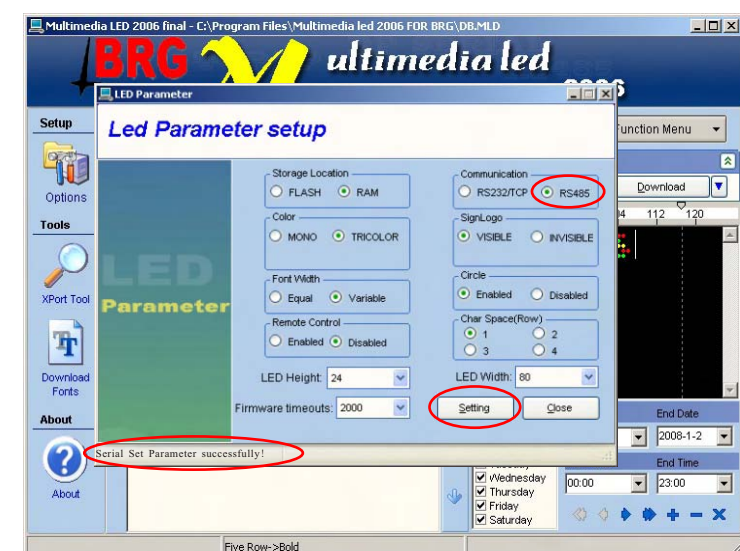
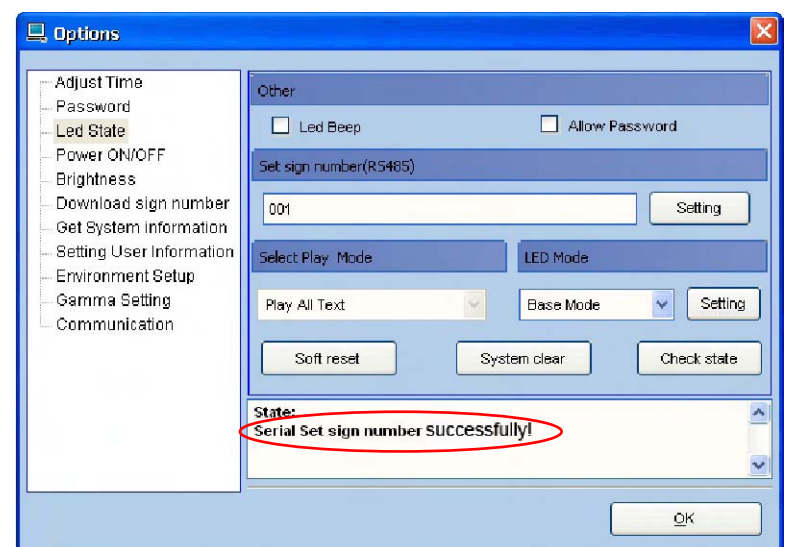
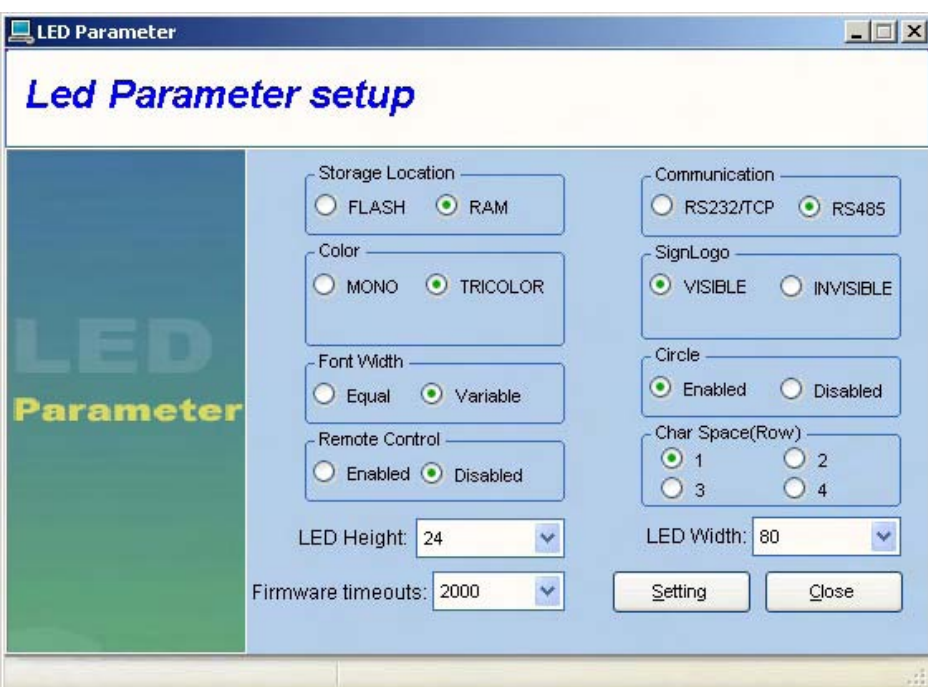


**Step5** Click "Yes"



Appear "Serial Set sign number successfully!", connect successfully, or should check the connection.

**Step6** Click "CTRL+F3"



**Step7** Set up the signs corresponding establishment (For example: 7\*80 multi-color led sign should set up Storage Location: FLASH/RAM; Color: TRICOLOR; LED Width: 80; COMMUNICATION: Rs485)

Note: must select RS485, if select RS232/TCP, will not send messages to signs.  
Other signs' sign number, communication should set up in the same.

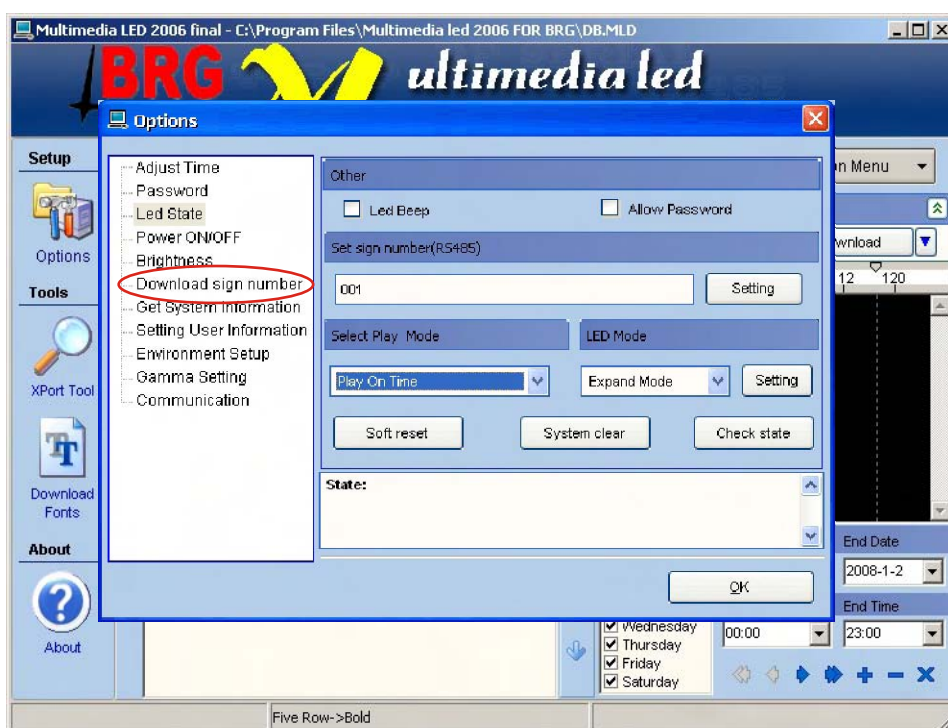


**Step8** Connect all the signs:



For example: two signs' connection (more than two is the same)

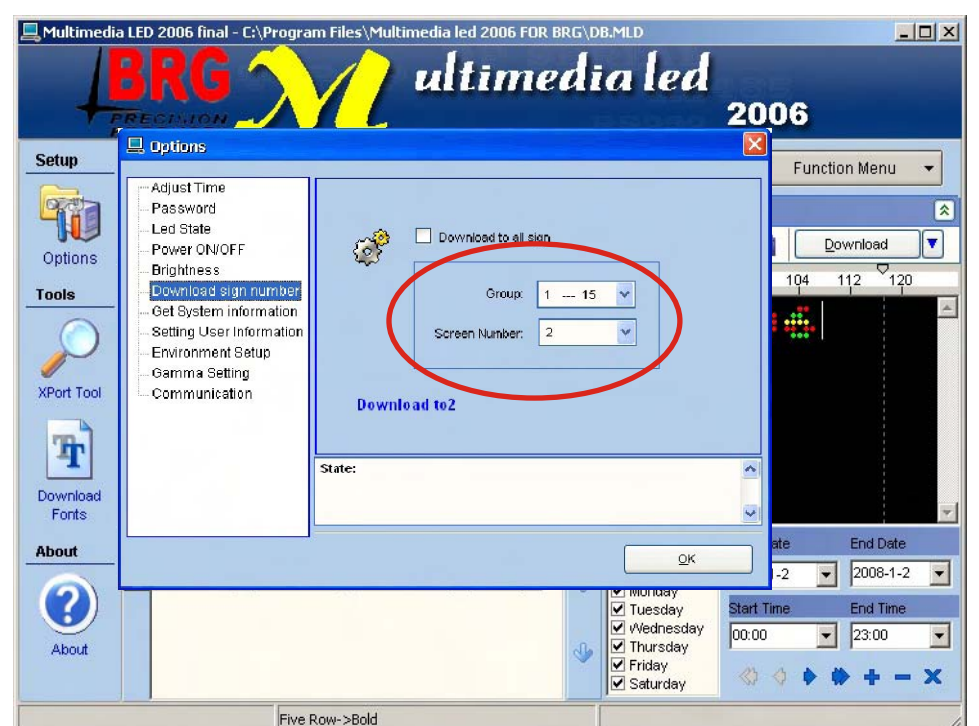
**Step9** Select screen number of signs, then click “OK”.



Tickle “Download to All LED”, if you want to send messages to all signs.

Once you choose Group, messages from pc would be downloaded to the selected group of displays.

Prior to setting the “screen number”, you must set “Group number”. For example: You want to display number 20. Considering number 20 is included in the Group 16-31, you should set “Group 16-31” first.



**Step10** Click “Download”



## Send messages to group signs-2 (RS485 communication)

Note: signs communication mode should be RS485

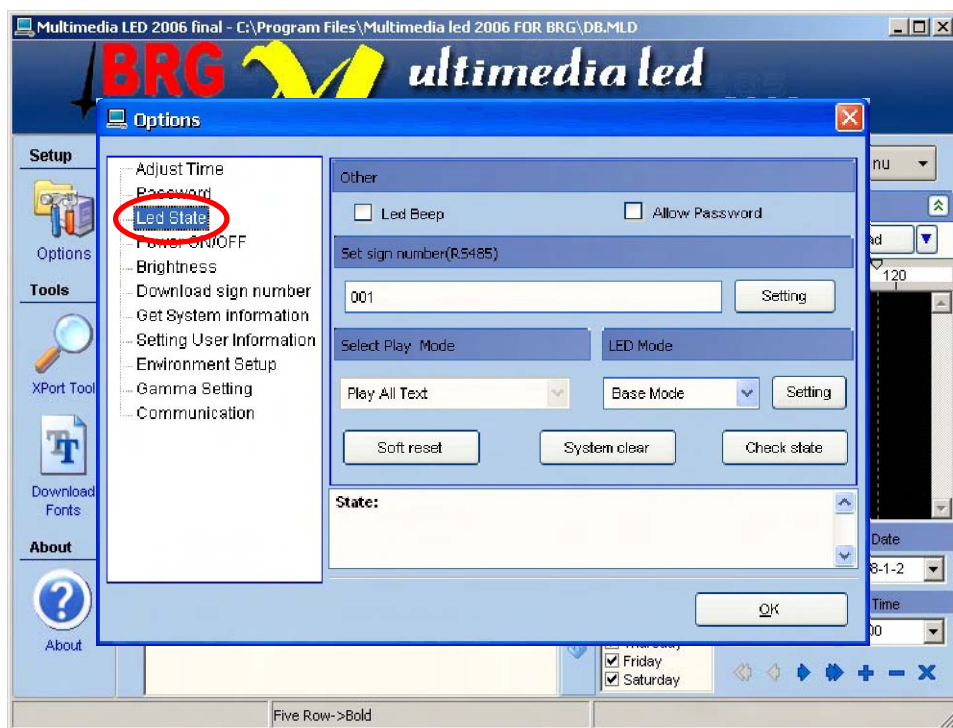
**Step1** Connect signs, set up sign number, see the connecting way in the below:



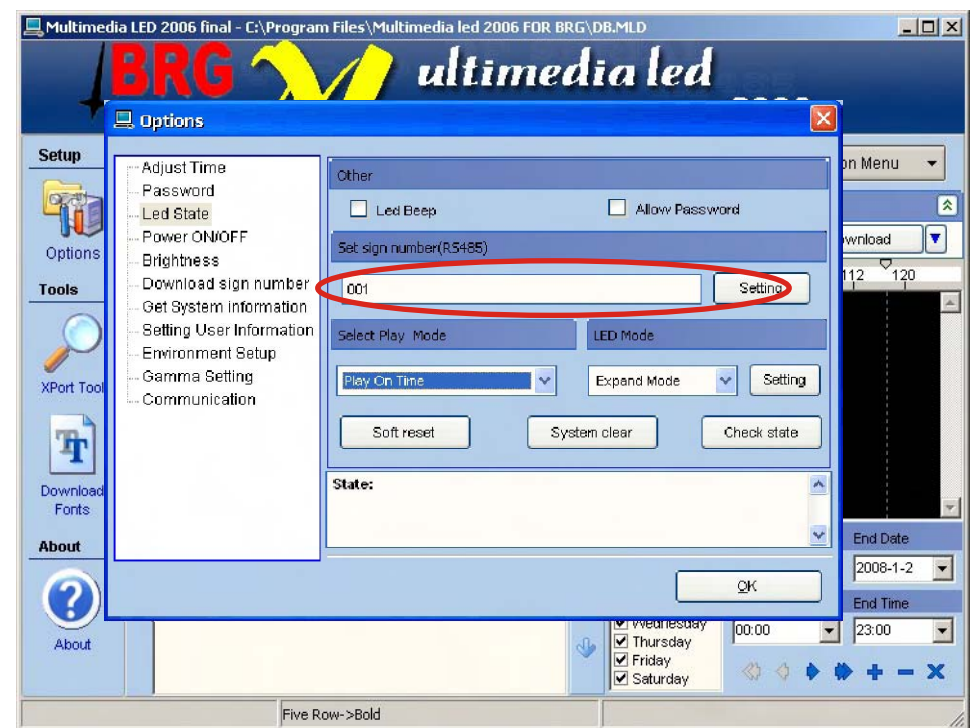
**Step2** Run software, click "options"



**Step3** Click "Led State".

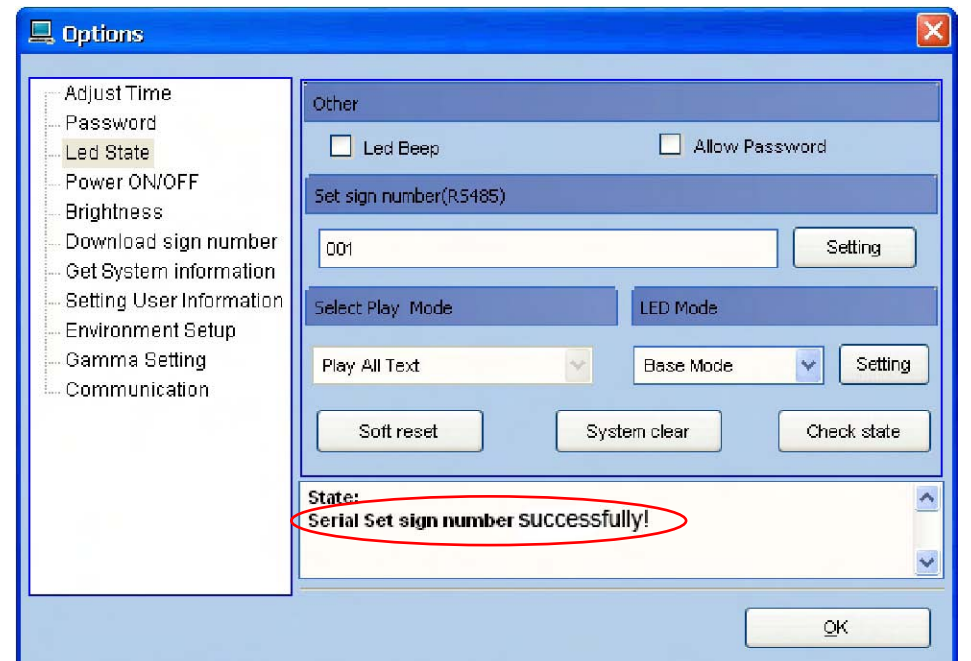
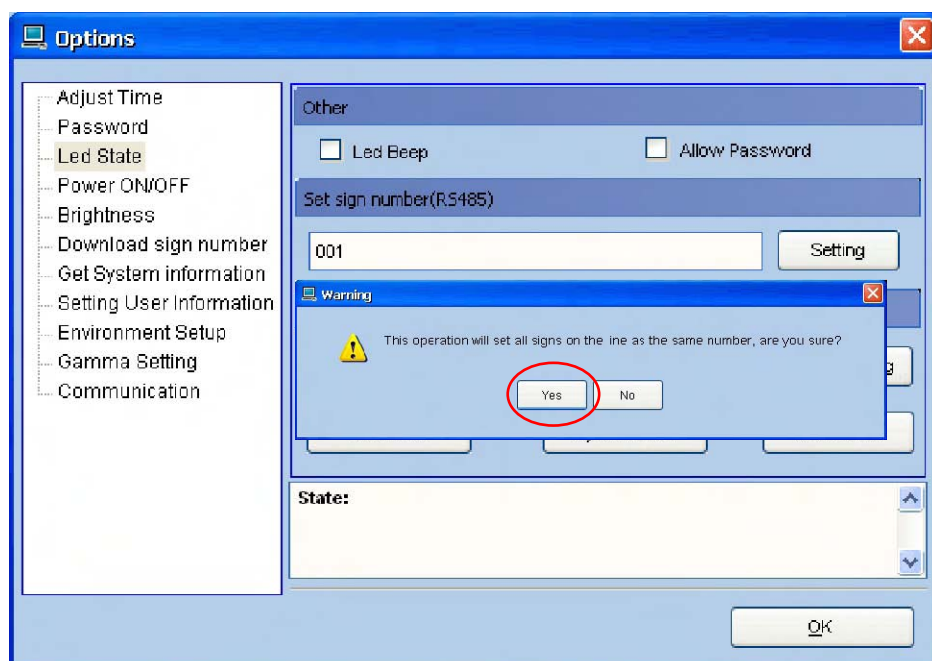


**Step4** Set equipment number, then click "Setting".



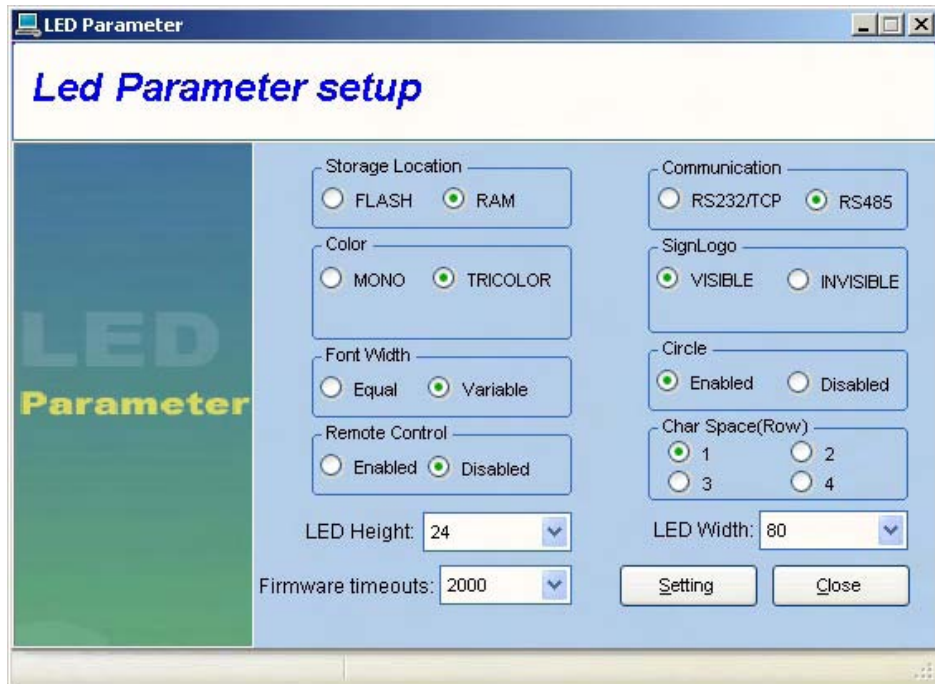
**Step5** Click "Yes"

Appear "Serial Set sign number successfully!", connect successfully, or should check the connection.

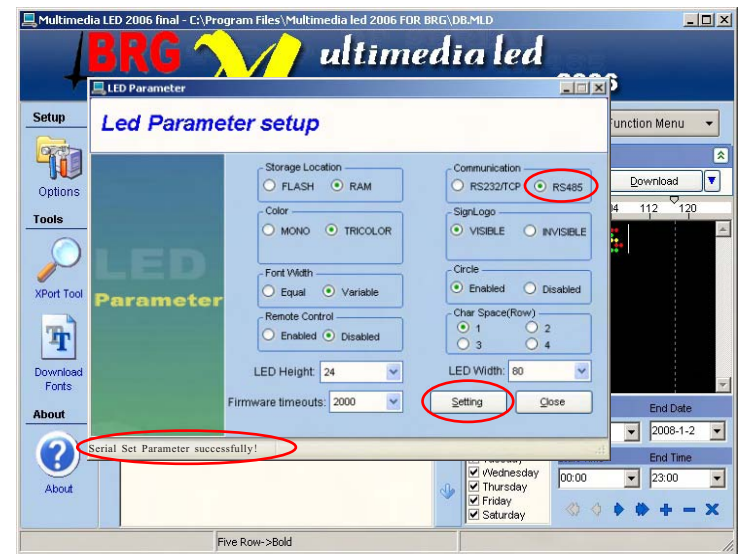




**Step6** Click "CTRL+F3"



**Step7** Set up the signs corresponding establishment  
(For example: 7\*80 multi-color led sign should set up  
Storage Location: FLASH/RAM; Color: TRICOLOR;  
LED Width: 80; COMMUNICATION: RS485)



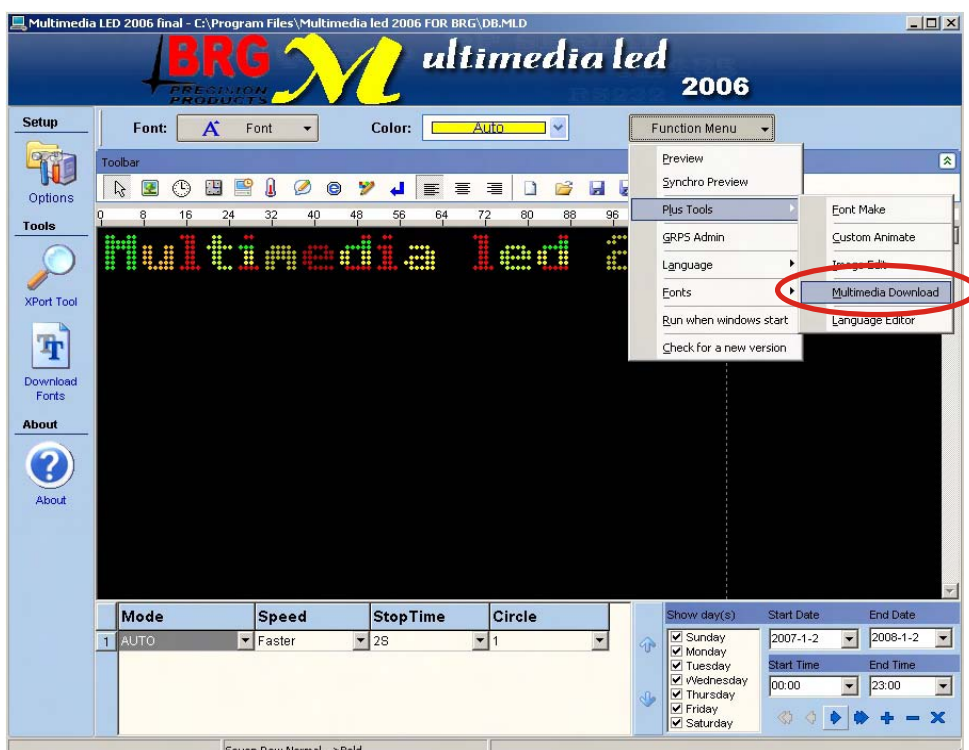
Note: must select RS485, if select RS232/TCP, will not send messages to signs.  
Other signs' sign number, communication should set up in the same.


**Step8** Connect all the signs:



For example: two signs'connection (more than two is the same)

**Step9** Click "Multimedia Download"

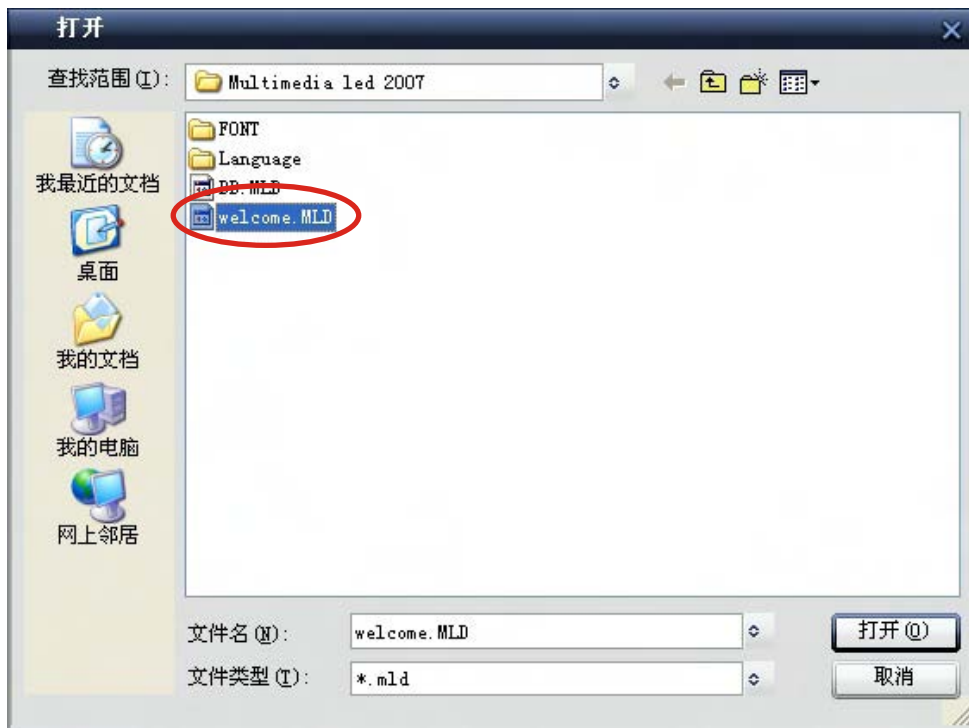


**Step10** Click if you want to send more than one messages to sign, you should click 

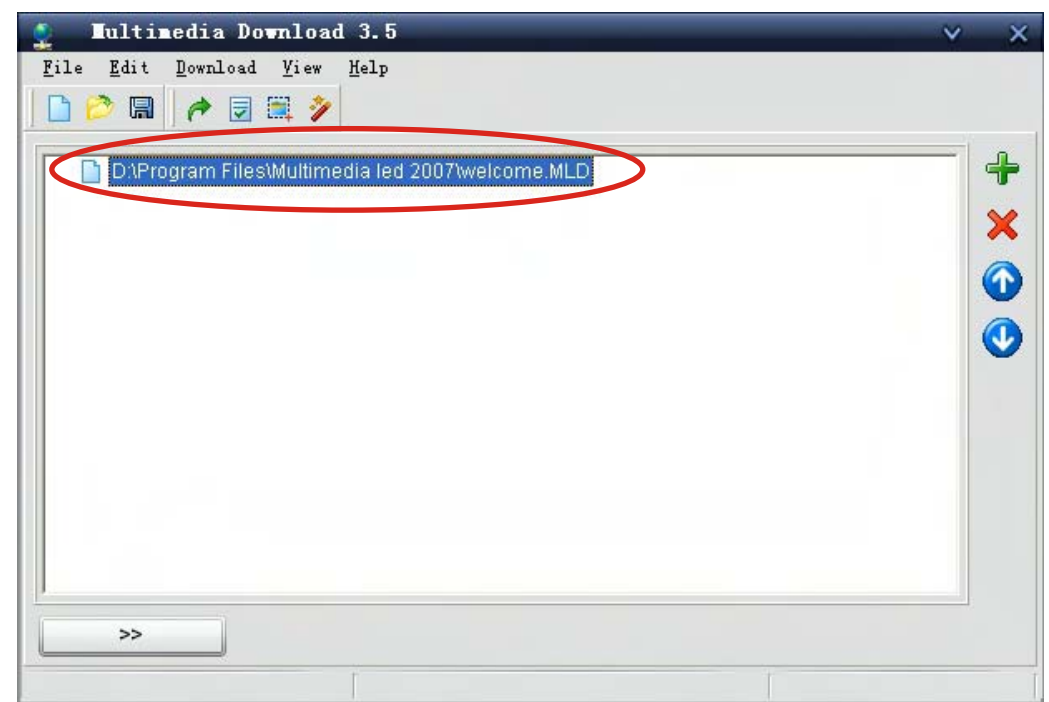




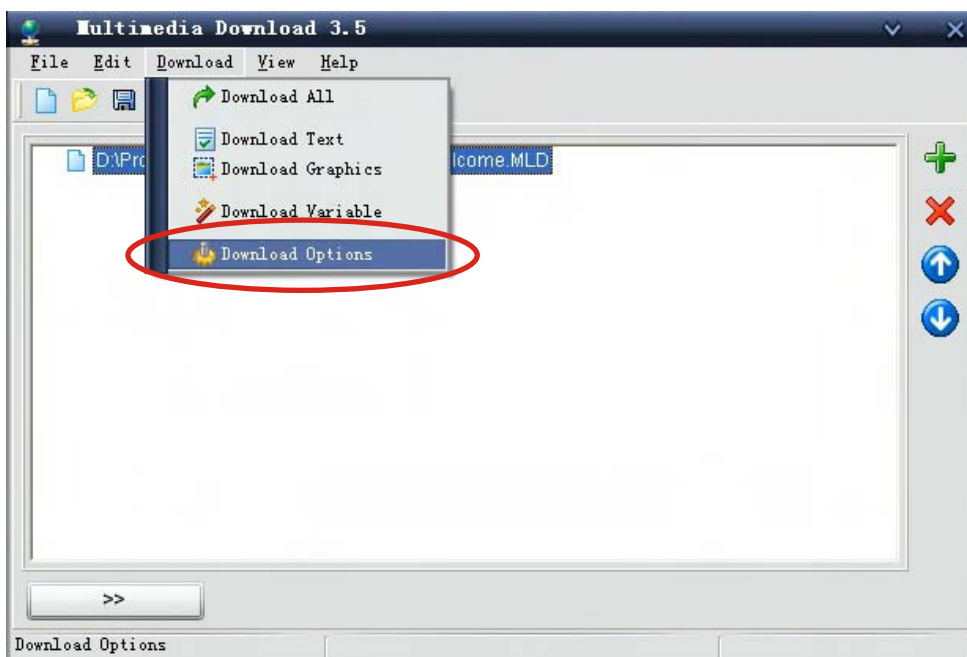
**Step11** Select you will send messages "\*.mld"  
(Note: before this step, you must create message on this software and save it as \*.mld file onto pc.),  
Double click the opened "welcome.mld" file



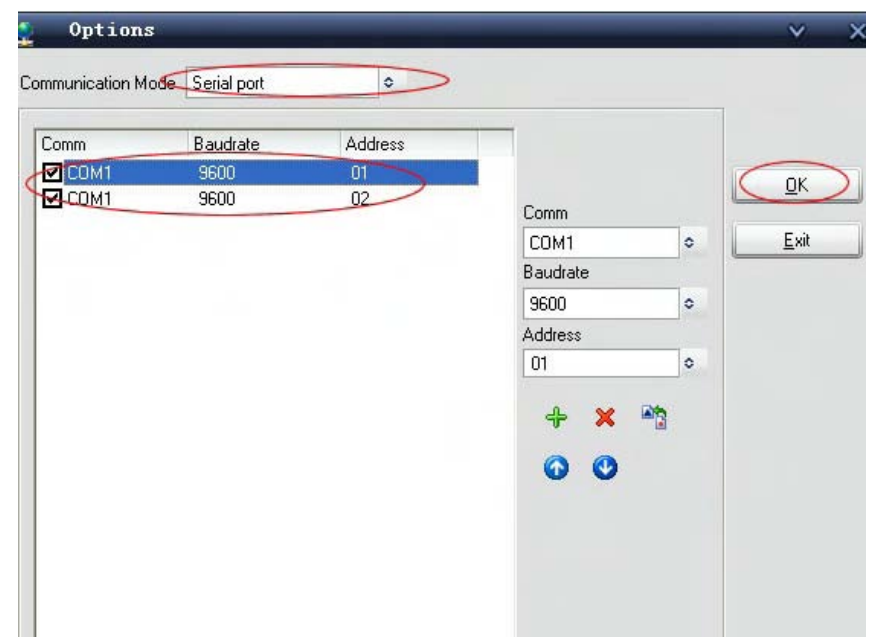
**Step12** Click "D:\Program Files\Multimedia led 2007\welcome.mld"



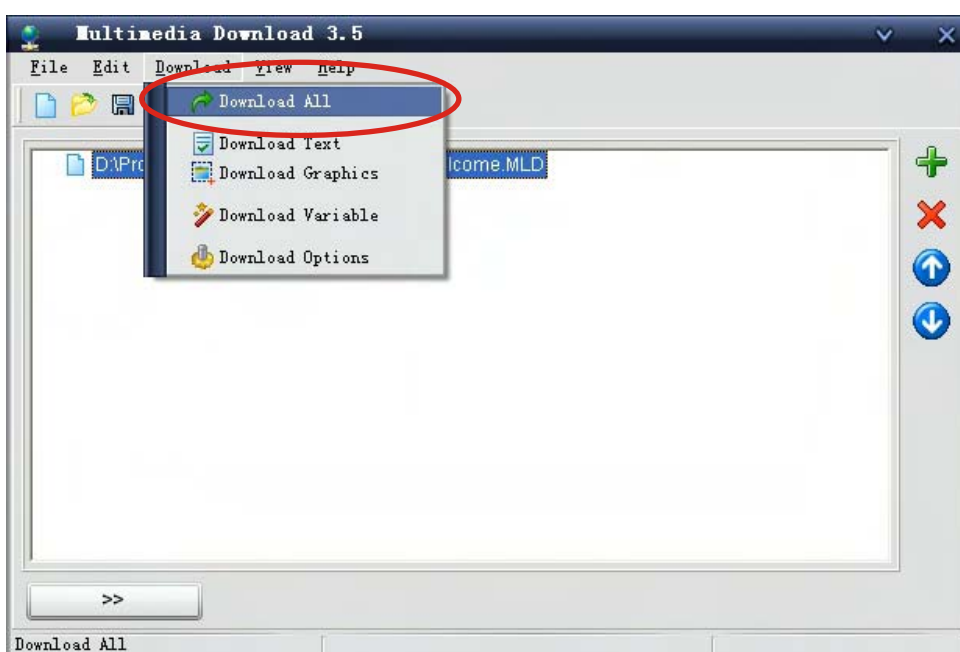
**Step13** Click "Download Options" under "Download".



**Step14** Select "Serial Port" under "Communication Mode", then click "+", now set up two signs' communication, the first's sign number is 01, the second is 02, COM port of the two sign are extended from the COM1 port of the pc, set up "Baudrate" to "9600", then click "OK"



**Step15** Click "Download ALL" under "Download"



(The here is the information file transmits to "welcome.mld" to assign the strip screen the establishment. "Welcome.mld" is sent to sign 01, and sign 02, or more signs)

Notes: If want to send the same message to all connected signs, Then only retains a communication establishment:

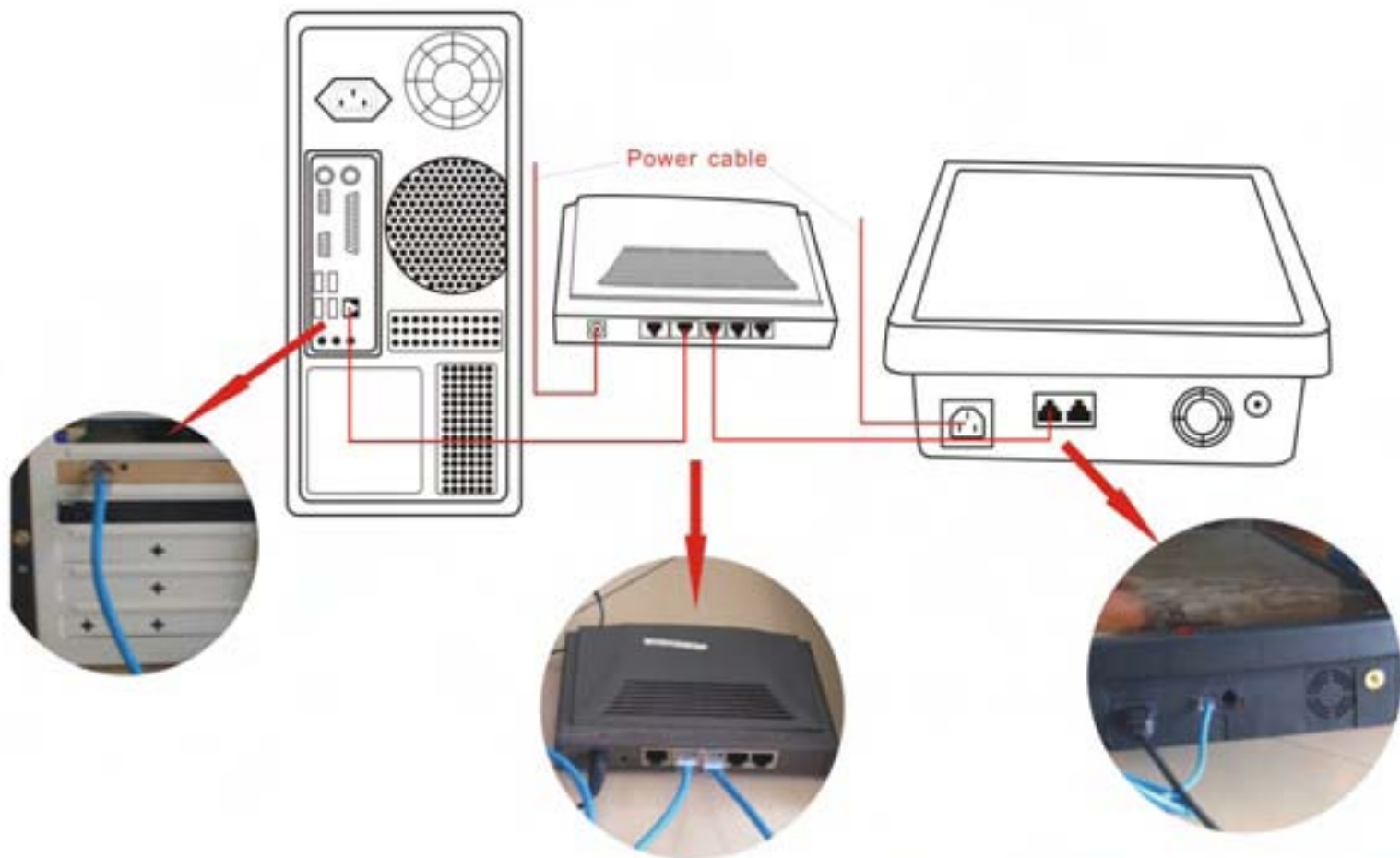
Comm: COM1; Baudrate: 9600; Address: 00



## Send messages to sign-3 (TCP/IP communication)

一、signs connection:

For example: one PC, one Router, one led sign with X-port, two reticle. See the connecting way in the below:



Accurate connection way:

- 1、One port of one reticle insert to pc main engine net card, another insert to the Router Lan port. (any port of 1, 2, 3...)
- 2、One port of another reticle insert to led sign, another insert to the Router Lan port. (any port of 1, 2, 3...)
- 3、Open the computer, open the Router and led sign power.
- 4、Check the Router's indicator light, if the indicator light is glint, the connection is right (The different Router has the different examination method)

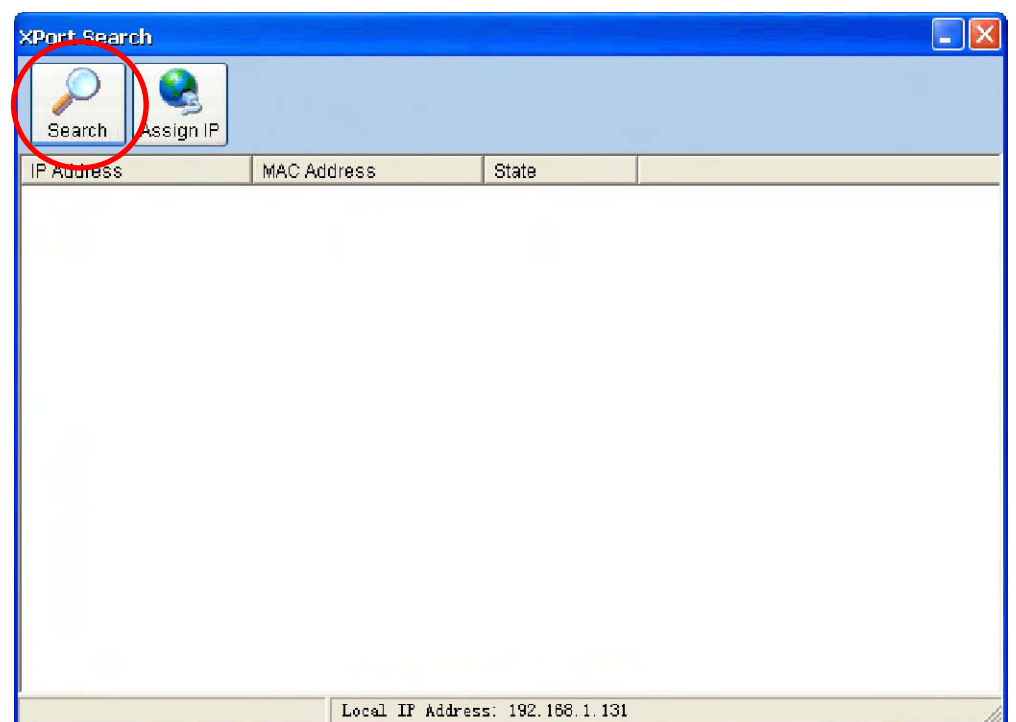
Note: the reticle do not insert to the Router WAN port, this can not communication, must insert to the LAN port.

二、Set up the software

**Step1** Click "XportTool".



**Step2** Click "Search".



Note: after click "Search", if do not find the IP, there are two reasons:

- 1、the connection of led sign, computer and Router is error:
- 2、At original state, the led sign has no assigns IP, so you must open the Router's DHCP dynamic allocation IP address function. (can refer to the operating instructions which the Router merchant provides).



**Step3** Double click the found IP Address to modify the address.

Note: If you don't want to modify it, write down the IP address for later use.



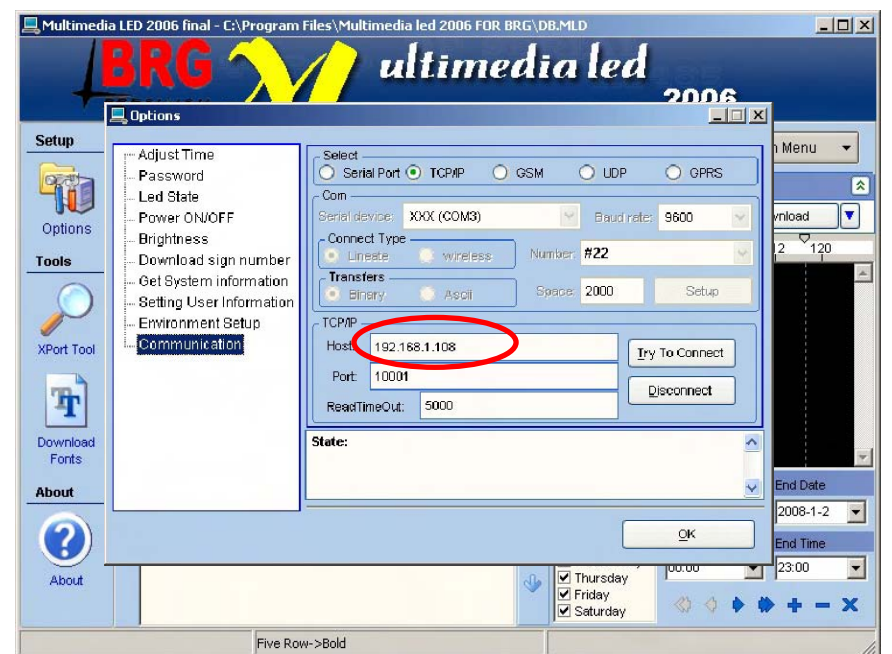
**Step4** Select "Assign a specific IP address", then click "Next".



**Step5** Modify IP Address, then click "Assign", finally close the "X-Port Search" window.



**Step6** Click , select "Communication", select "TCP/IP" communication.



Input the IP in "Host", for example, at step4, get the IP "192.168.1.150", then click "OK".

Above the step has completed the led sign's communication establishment.

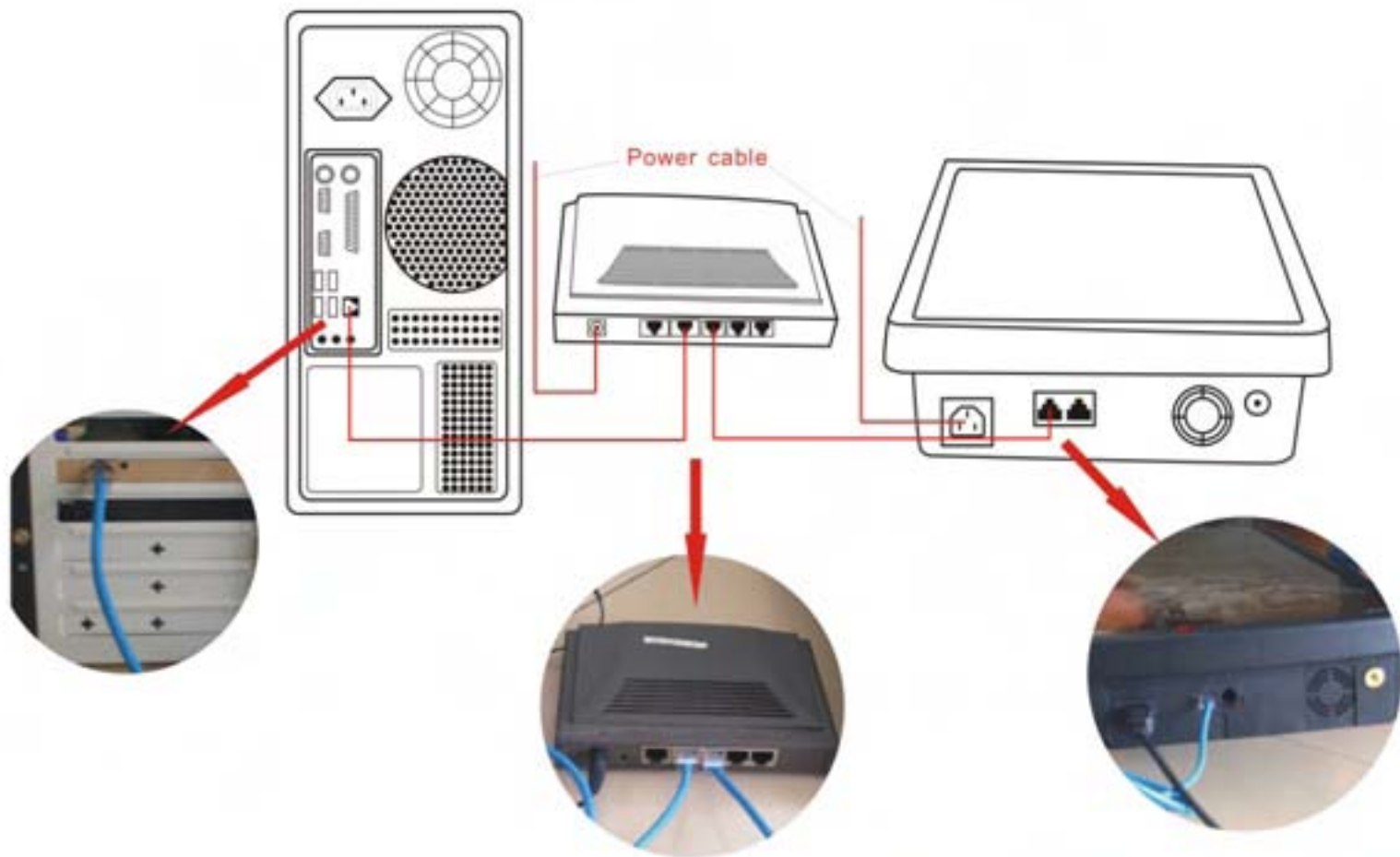
**Step7** Check the messages, display mode, show days, and so on, then click "Download".



## Send messages to sign-4 (TCP/IP communication of network)

### 一、signs connection:

For example: one PC, one Router, one led sign with X-port, two reticle. See the connecting way in the below:



Accurate connection way:

- 1、One port of one reticle insert to pc main engine net card, another insert to the Router Lan port. (any port of 1, 2, 3...)
- 2、One port of another reticle insert to led sign, another insert to the Router Lan port. (any port of 1, 2, 3...)
- 3、Open the computer, open the Router and led sign power.
- 4、Check the Router's indicator light, if the indicator light is glint, the connection is right (The different Router has the different examination method)

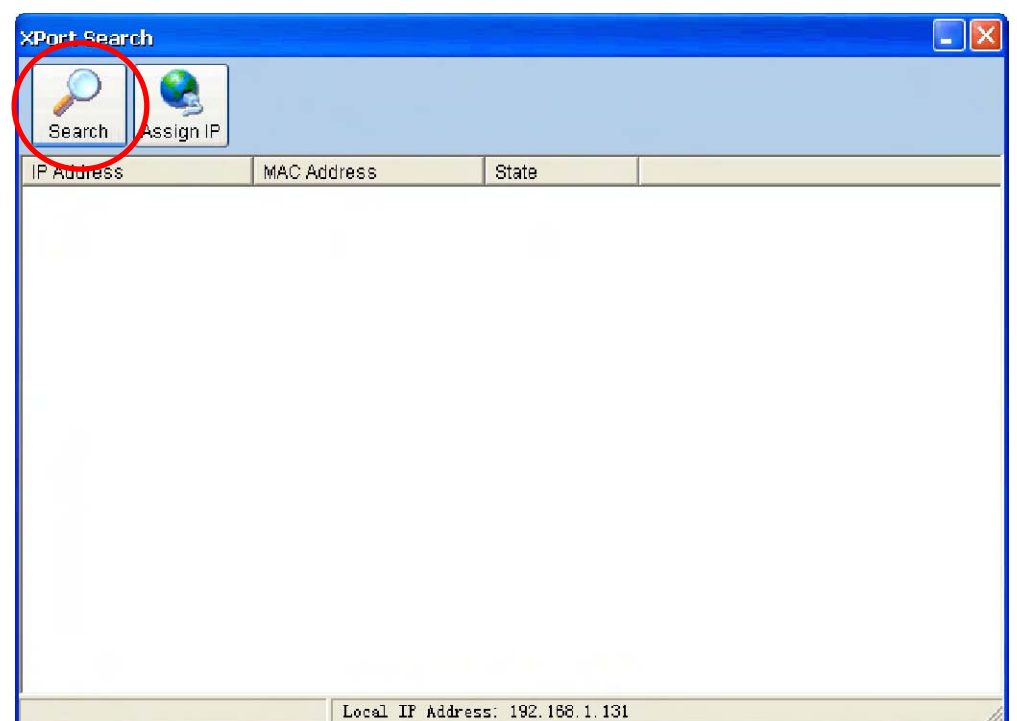
Note: the reticle do not insert to the Router WAN port, this can not communication, must insert to the LAN port.

### 二、Set up the software

**Step1** Click "XportTool".



**Step2** Click "Search".



Note: after click "Search", if do not find the IP, there are two reasons:

- 1、the connection of led sign, computer and Router is error:
- 2、At original state, the led sign has no assigns IP, so you must open the Router's DHCP dynamic allocation IP address function. (can refer to the operating instructions which the Router merchant provides).



**Step3** Double click the found IP Address to modify the address.

Note: If you don't want to modify it, write down the IP address for later use.



**Step4** Select "Assign a specific IP address", then click "Next".



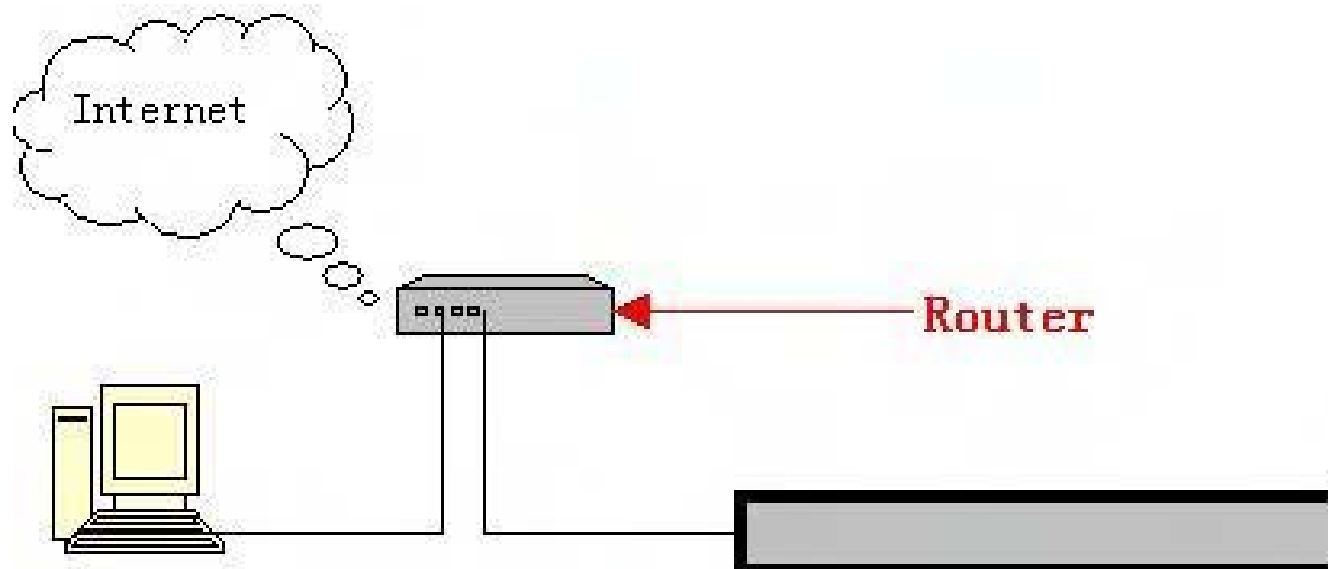
**Step5** Modify IP Address, then click "Assign", finally close the "X-Port Search" window.



**Step6** Set up the Router

Note: need connect the Router with Internet.

Following chart network layout:



Set up the Router (different Router, the setup is different, can refer to the operating instructions which the Router merchant provides)

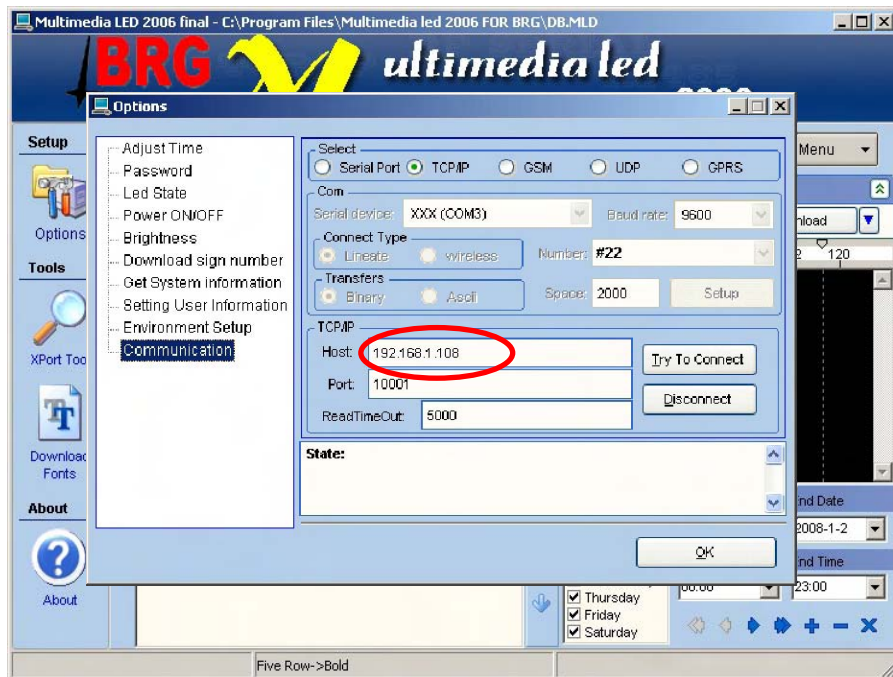
- 1、Enter the Router establishment contact surface
- 2、Select "retransmits the rule", select "DMZ main engine".
- 3、Fill IP address which the DMZ main engine maps. (The IP address is the strip screen in local area network IP address which searches with the X-Port tool, if after revised the IP address that to have to be the revision IP address, for example: 192. 168. 1. 150)



**Step7** Please search the Internet service business to provide for you on the computer interlocks the net only IP address.

Note: This IP address is not the strip screen IP address which the "X-Port Tool" gains in the step 4 of operation 192. 168. 1. 150, but is Internet service business provides for you on the computer interlocks the net IP address, this address has uniqueness.

**Step8** In Interlocks on the on-line other computer to turn on LED software, click  select "communication", select "TCP/IP".

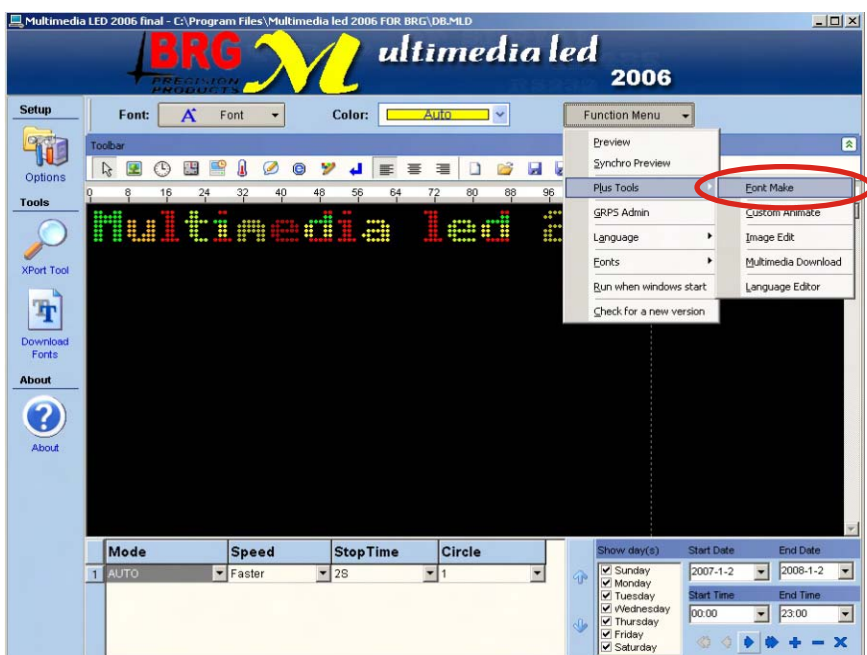


Then input IP address on "Host" (This IP address is step 6 of operation on interlocks net IP address), for example Internet service business provides the IP address is 60. 190. 233. 46, then click "OK".

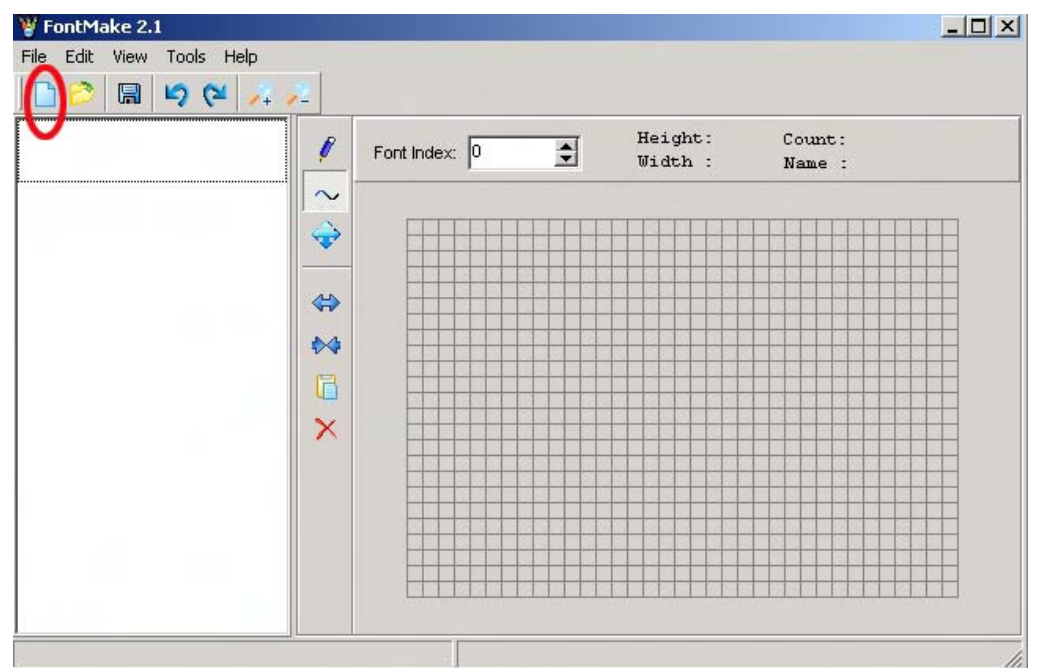
**Step9** Check the messages, display mode, show days, and so on, then click "Download".

## Make font

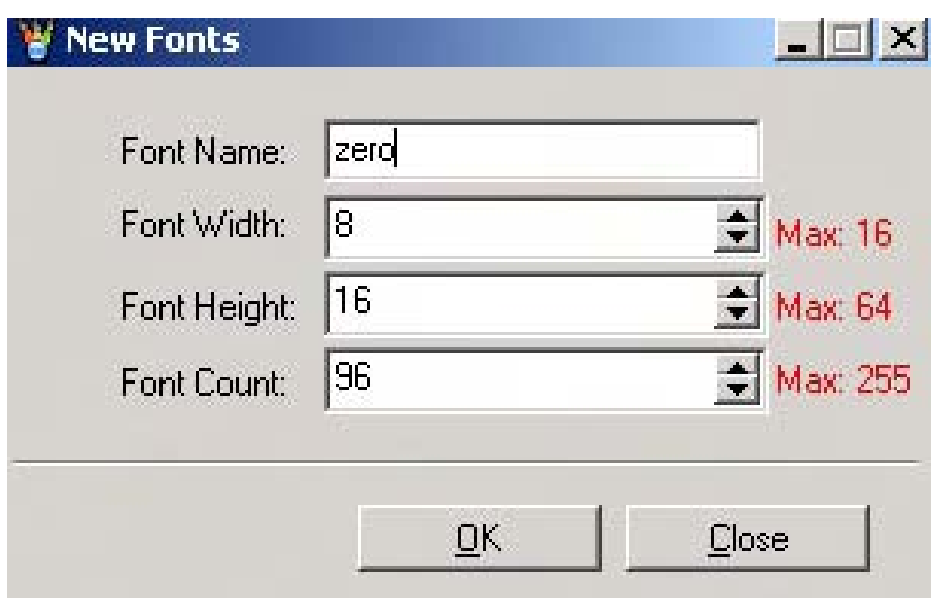
**Step1** Click "Font Make".



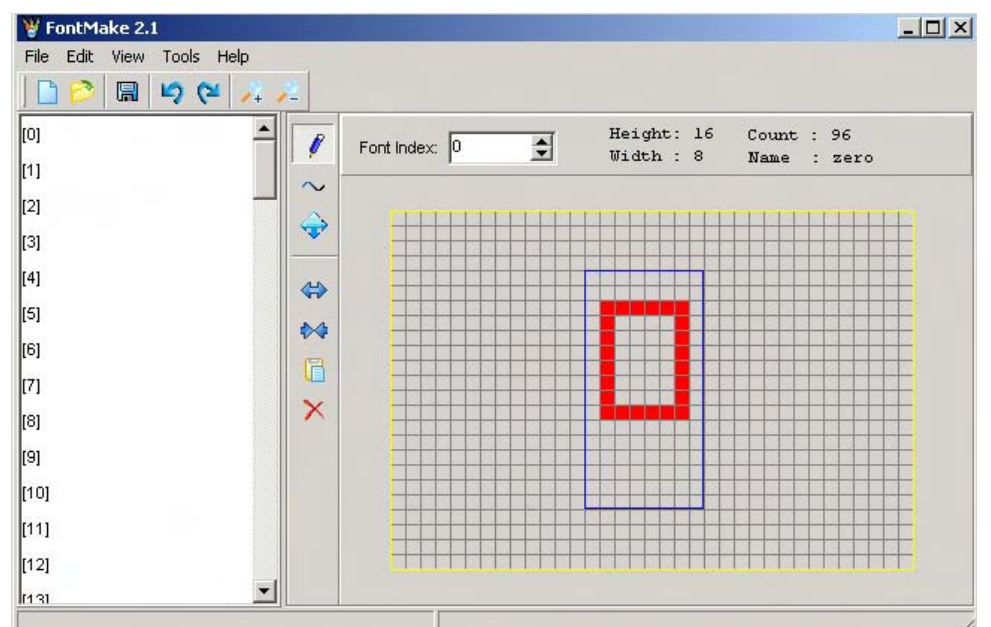
**Step2** Click "New font files".



**Step3** Set parameters for font. Click "OK".

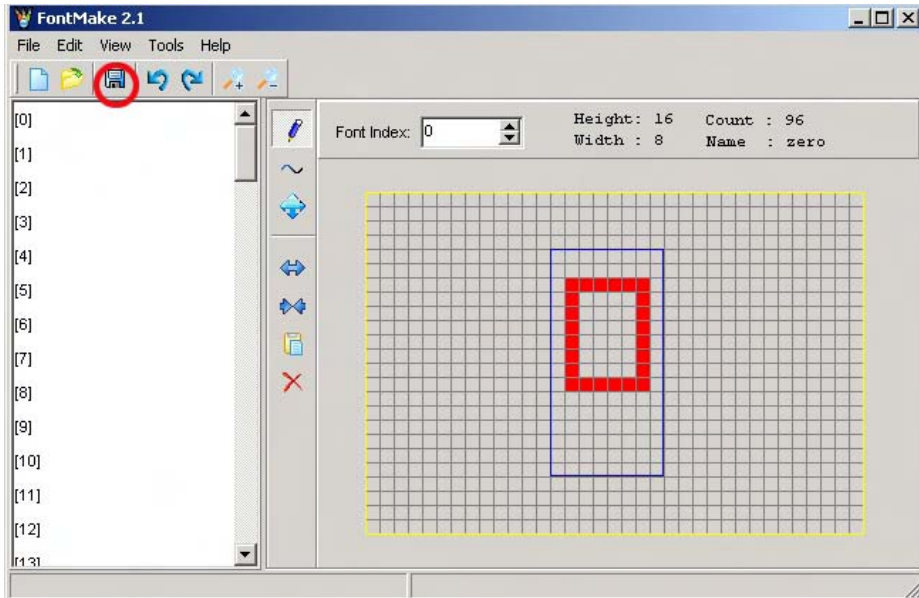


**Step4** Draw font on the edit area.



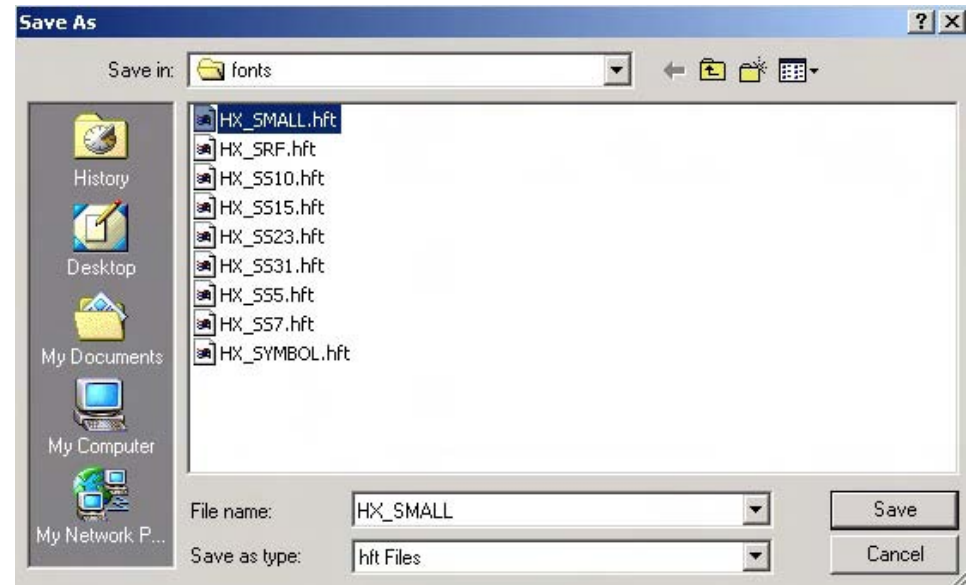


**Step5** Click “Save”.

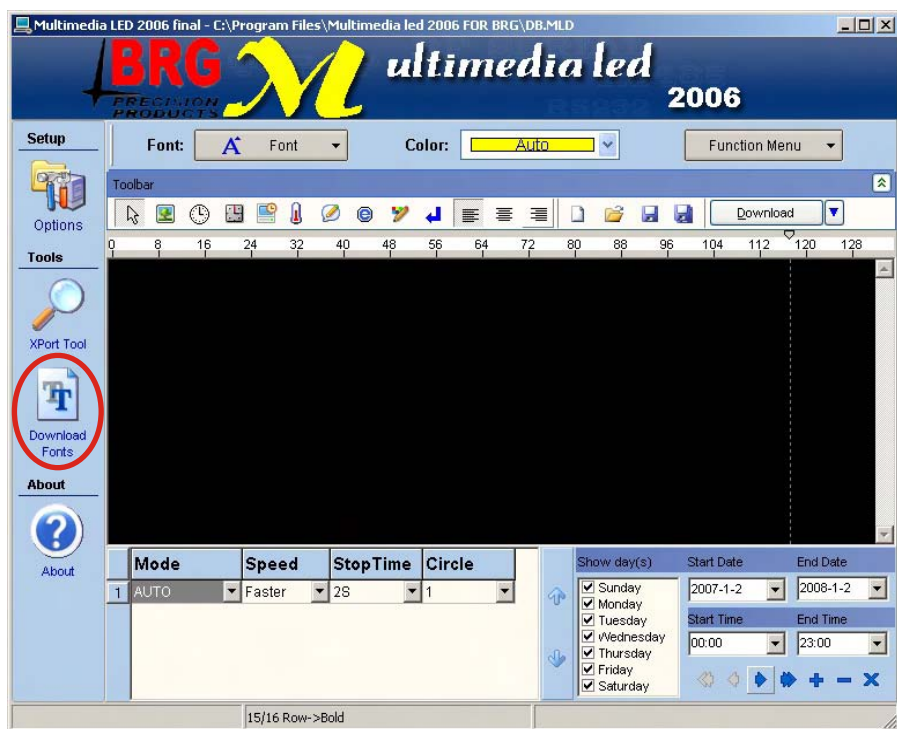


**Step6** Save new font file to the folder where the original font of software locates on PC.

Note: Once you save a new font file onto PC, you must replace the old one.

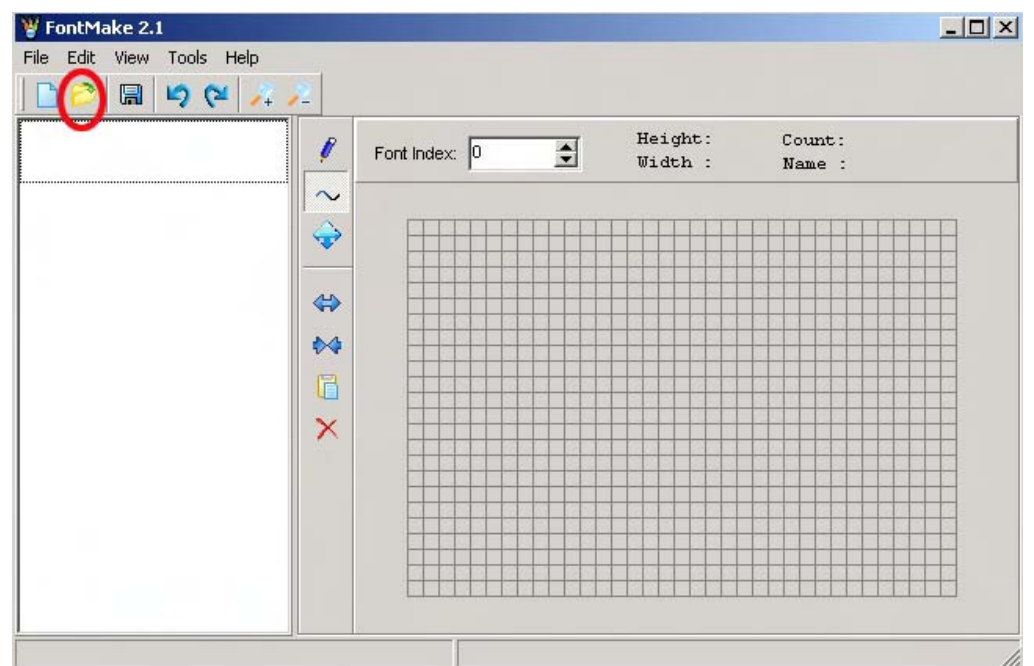


**Step7** Click “Download Fonts” to download new font file onto PC.

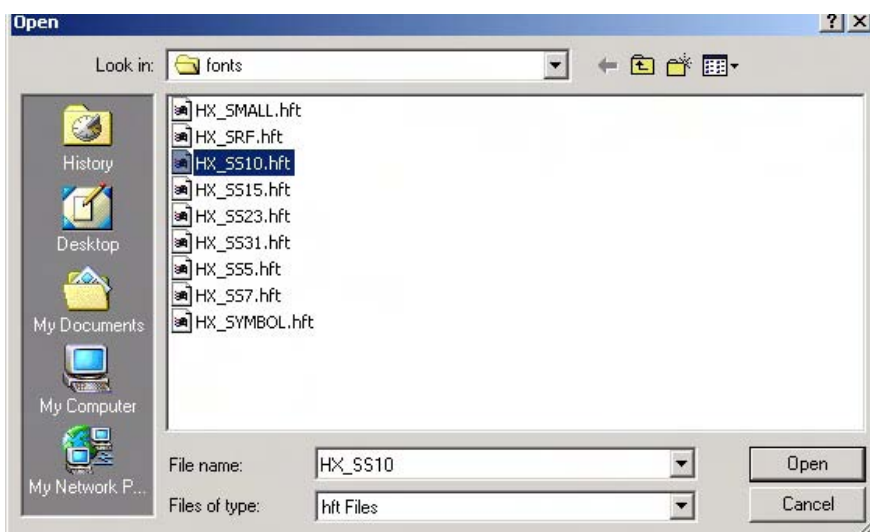


Note: The best way to make font is to modify the old ones, then save the modified one onto PC. Follow steps below:

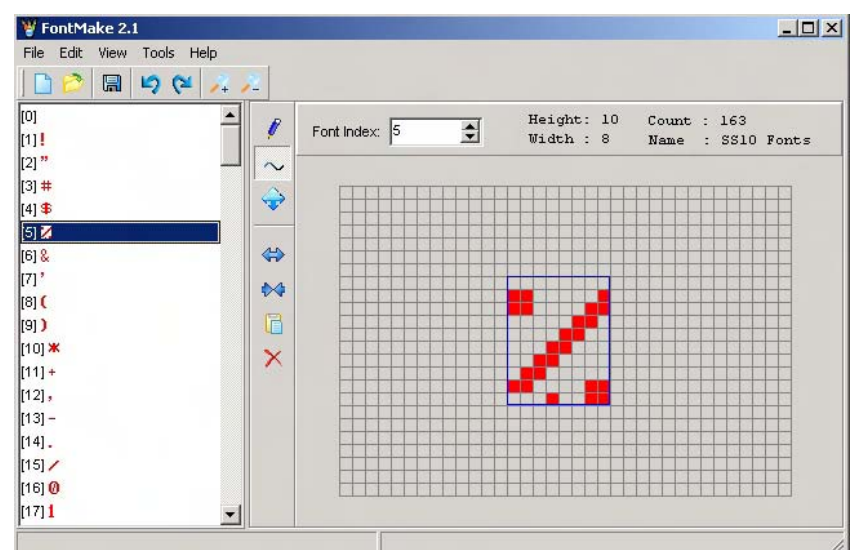
**Step1** Click “Open”.



**Step2** Open one of the existed font files



**Step3** Select one and modify it, then click “Save”.





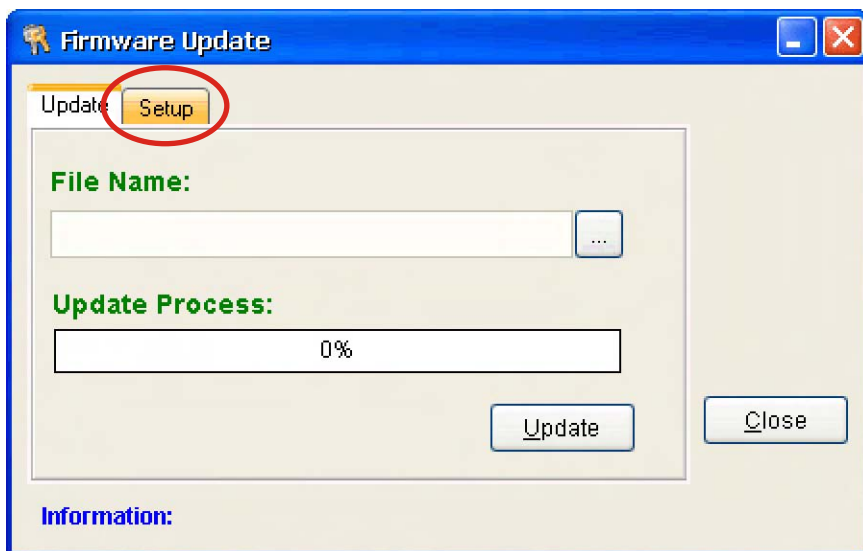
## Update firmware

**Step1** Connect sign with PC via communication cable.

Note: If you want to update firmware using TCP/IP communication, you must connect sign to Router.



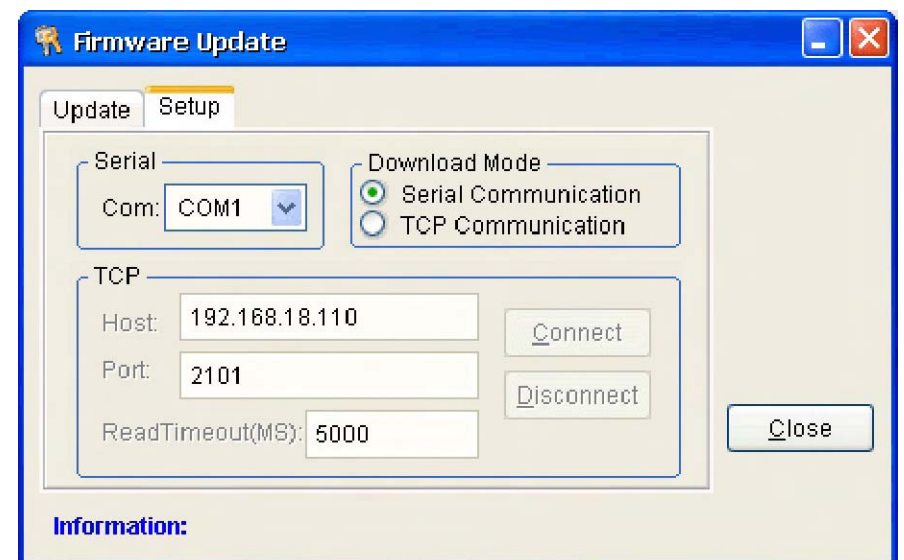
**Step3** Click “Setup”.



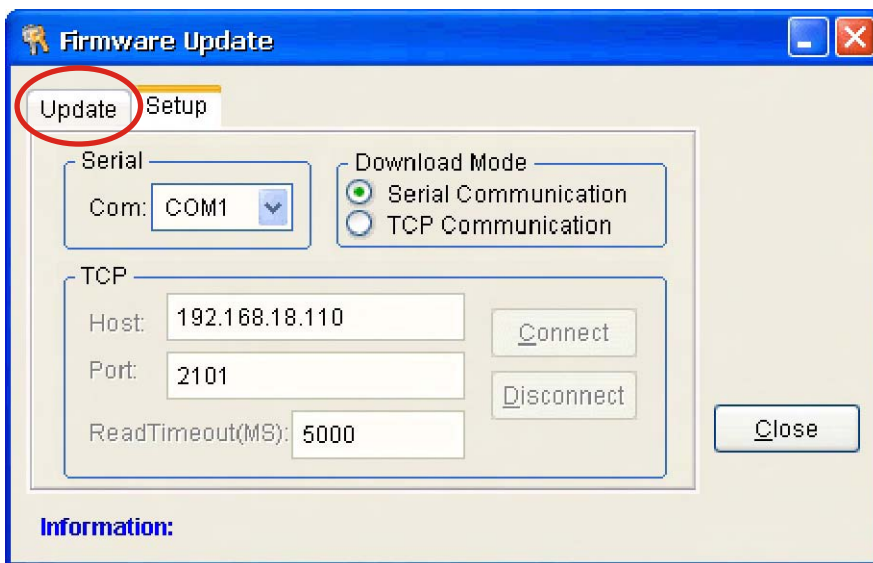
**Step2** Double click



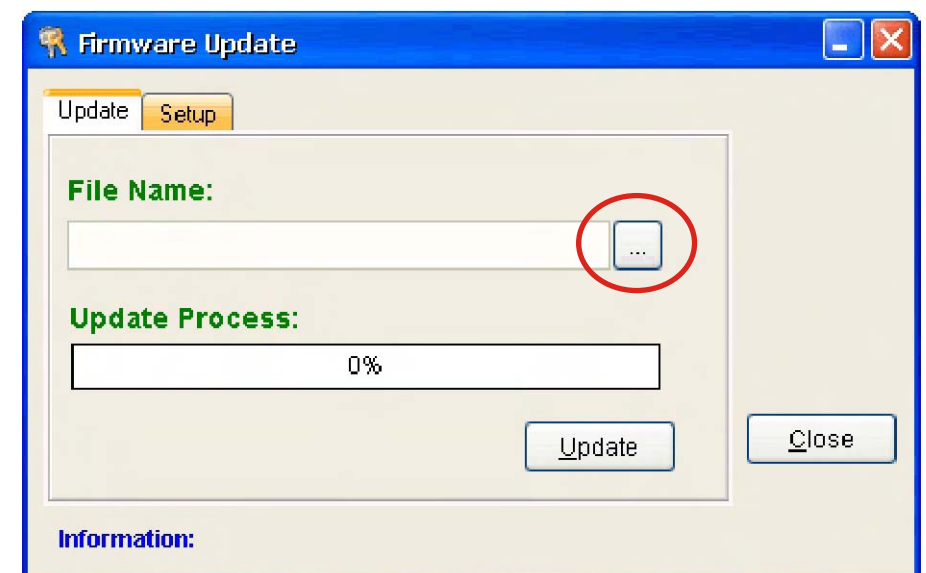
**Step4** If you use RS232 communication, select “Serial Communication”; If you use TCP/IP communication, select “TCP communication”.



**Step5** Click “Update”.



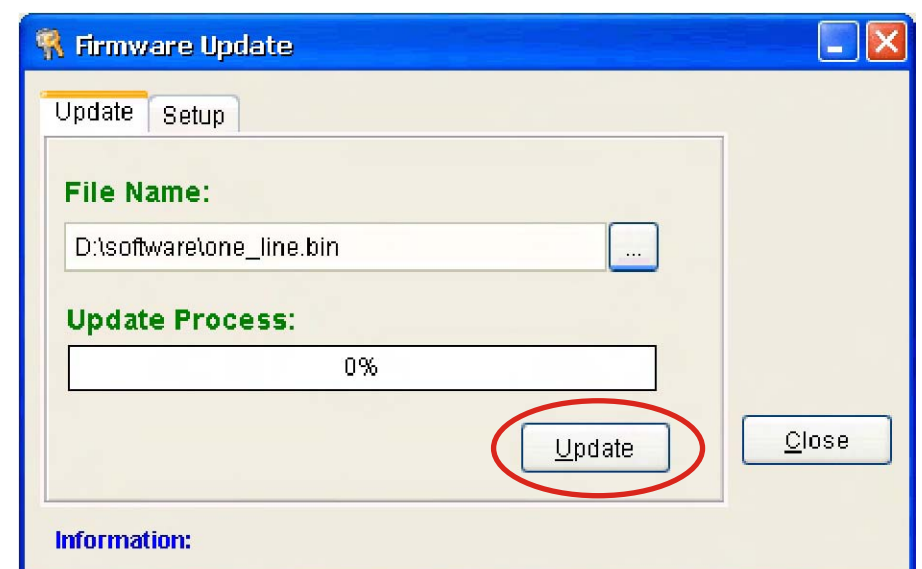
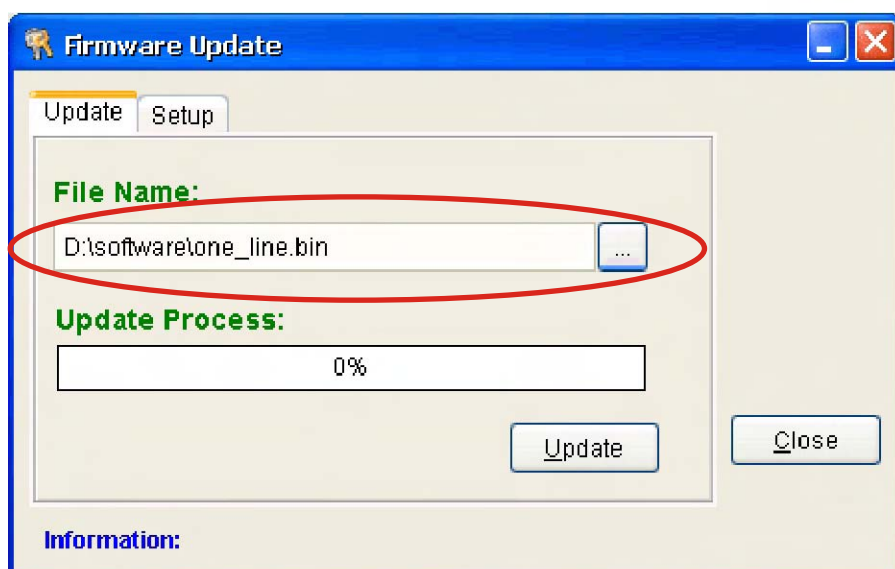
**Step6** Click “Browse”.



**Step7** Open new firmware, for example, open



**Step8** Click “Update”.

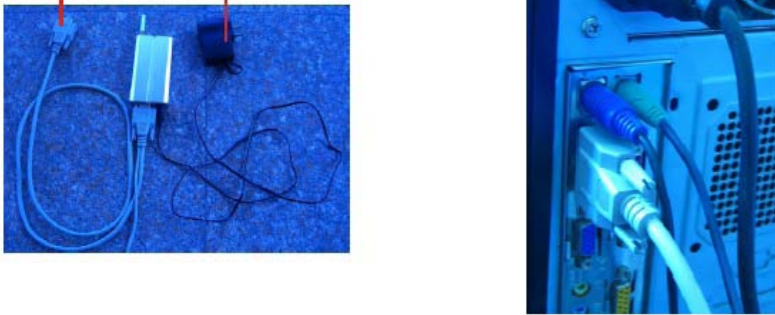




## Set GSM communication

**Step1** Connect GSM device with PC.

This side to COM port on the PC  
This side to socket

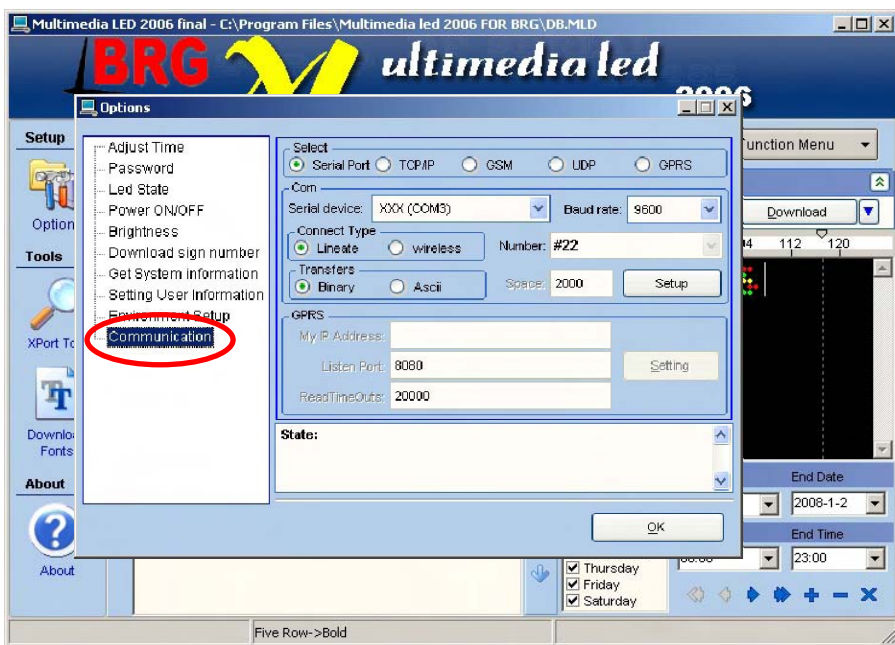


Note: You must go to your local GSM service operators to open the GSM data transmission service.

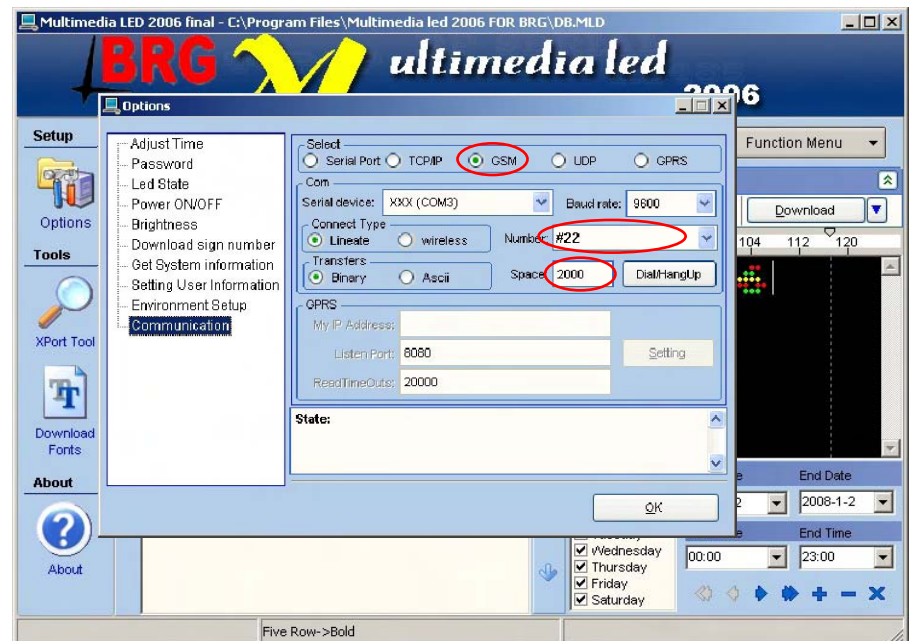
**Step2** Click on "Options" on the software.



**Step3** Click on "Communication".

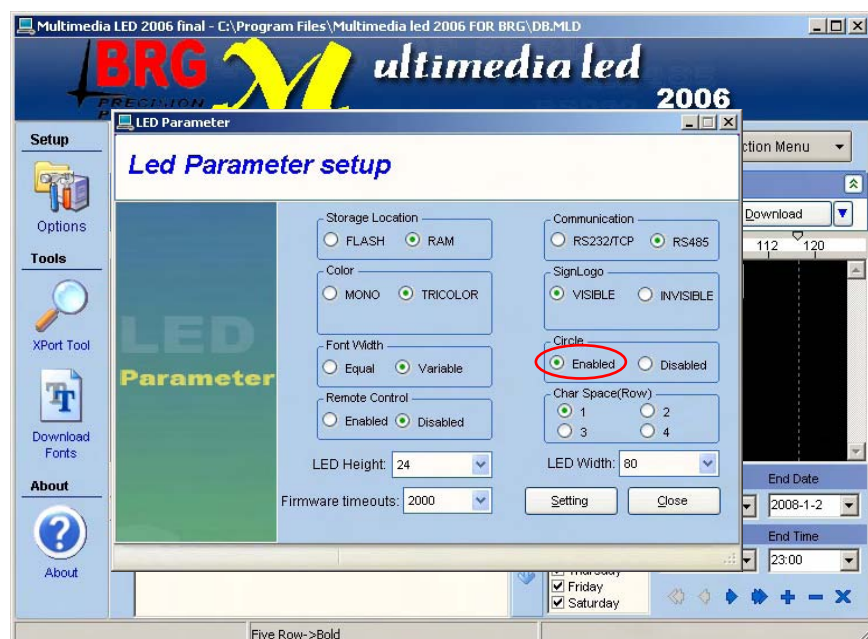


**Step4** Select "GSM/Modem", then type your number, finally click on "Dial/Hangup".



## Set circle play of messages

**Step1** Press "Ctrl+F3" on the keyboard, then set circle mode. "Enabled" means that messages have options of circle times, from 1-9; "Disabled" means that messages only circle one time.



**Step2** Select circle times for every message.

